



VOTER TURNOUT SUMMARY REPORT 2008 GENERAL ELECTION

Monroe County Board of Elections
39 West Main Street, Rochester, New York 14614

February 11, 2009

Peter M. Quinn
Commissioner of Elections

Thomas F. Ferrarese
Commissioner of Elections

CONTENTS DESCRIPTION

General Summary	Page 1
Democratic Summary	Page 12
Republican Summary	Page 18
Independence Summary	Page 24
Conservative Summary	Page 30
Working Families Summary	Page 36
Blanks Summary	Page 42
Historical Data.....	Page 48

GENERAL SUMMARY

2008 GENERAL ELECTION
VOTER TURNOUT BY GENDER

LT/LD SUMMARY

LEGISLATIVE DISTRICT OR TOWN CITY	TOTAL VOTERS			MALES			FEMALES		
	VOTED	REGISTERED	TURNOUT	VOTED	REGISTERED	TURNOUT	VOTED	REGISTERED	TURNOUT
Leg. Dist. 06	2,415	3,093	78.08 %	1,019	1,330	76.62 %	1,396	1,763	79.18 %
Leg. Dist. 07	1,230	1,614	76.21 %	536	740	72.43 %	694	874	79.41 %
Leg. Dist. 21	10,498	13,713	76.56 %	4,392	5,972	73.54 %	6,106	7,741	78.88 %
Leg. Dist. 22	6,436	9,909	64.95 %	2,415	4,094	58.99 %	4,021	5,815	69.15 %
Leg. Dist. 23	10,620	12,733	83.41 %	5,066	6,176	82.03 %	5,554	6,557	84.70 %
Leg. Dist. 24	6,147	7,506	81.89 %	2,775	3,453	80.36 %	3,372	4,053	83.20 %
Leg. Dist. 25	8,010	10,819	74.04 %	3,388	4,900	69.14 %	4,622	5,919	78.09 %
Leg. Dist. 26	5,432	7,178	75.68 %	2,248	3,077	73.06 %	3,184	4,101	77.64 %
Leg. Dist. 27	11,061	14,214	77.82 %	4,371	5,985	73.03 %	6,690	8,229	81.30 %
Leg. Dist. 28	6,712	10,066	66.68 %	2,714	4,235	64.09 %	3,998	5,831	68.56 %
Leg. Dist. 29	8,418	11,952	70.43 %	3,345	4,930	67.85 %	5,073	7,022	72.24 %
TOTAL:	76,979	102,797	74.88 %	32,269	44,892	71.88 %	44,710	57,905	77.21 %
TOWNS									
Brighton	19,223	22,411	85.77 %	8,476	9,978	84.95 %	10,747	12,433	86.44 %
Chili	15,362	18,891	81.32 %	7,079	8,880	79.72 %	8,283	10,011	82.74 %
Clarkson	3,040	3,806	79.87 %	1,439	1,830	78.63 %	1,601	1,976	81.02 %
East Rochester	2,957	3,807	77.67 %	1,295	1,717	75.42 %	1,662	2,090	79.52 %
Gates	13,950	17,994	77.53 %	6,177	8,125	76.02 %	7,773	9,869	78.76 %
Greece	49,214	62,066	79.29 %	22,228	28,269	78.63 %	26,986	33,797	79.85 %
Hamlin	4,195	5,304	79.09 %	2,004	2,546	78.71 %	2,191	2,758	79.44 %
Henrietta	17,987	22,065	81.52 %	8,369	10,400	80.47 %	9,618	11,665	82.45 %
Irondequoit	28,446	35,046	81.17 %	12,413	15,492	80.13 %	16,033	19,554	81.99 %
Mendon	5,301	6,264	84.63 %	2,515	3,005	83.69 %	2,786	3,259	85.49 %
Ogden	10,178	12,481	81.55 %	4,755	5,879	80.88 %	5,423	6,602	82.14 %
Parma	8,116	10,199	79.58 %	3,843	4,889	78.61 %	4,273	5,310	80.47 %
Penfield	20,960	24,989	83.88 %	9,666	11,620	83.18 %	11,294	13,369	84.48 %
Perinton	28,040	33,003	84.96 %	12,834	15,334	83.70 %	15,206	17,669	86.06 %
Pittsford	16,855	19,678	85.65 %	7,761	9,124	85.06 %	9,094	10,554	86.17 %
Riga	3,131	3,797	82.46 %	1,479	1,808	81.80 %	1,652	1,989	83.06 %
Rush	2,135	2,554	83.59 %	1,018	1,240	82.10 %	1,117	1,314	85.01 %
Sweden	5,299	6,504	81.47 %	2,431	3,010	80.76 %	2,868	3,494	82.08 %
Webster	23,693	28,160	84.14 %	10,858	12,961	83.77 %	12,835	15,199	84.45 %
Wheatland	2,713	3,263	83.14 %	1,268	1,527	83.04 %	1,445	1,736	83.24 %
TOTAL:	280,795	342,282	82.04 %	127,908	157,634	81.14 %	152,887	184,648	82.80 %
GRAND TOTAL:	357,774	445,079	80.38 %	160,177	202,526	79.09 %	197,597	242,553	81.47 %

2008 GENERAL ELECTION
VOTER TURNOUT BY PARTY

LT/LD SUMMARY

Part 1 of 2

LEGISLATIVE DISTRICT OR TOWN	DEMOCRAT			REPUBLICAN			INDEPENDENCE		
	VOTED	REGISTERED	TURNOUT	VOTED	REGISTERED	TURNOUT	VOTED	REGISTERED	TURNOUT
CITY									
Leg. Dist. 06	982	1,201	81.77 %	716	886	80.81 %	91	116	78.45 %
Leg. Dist. 07	526	667	78.86 %	378	478	79.08 %	58	68	85.29 %
Leg. Dist. 21	6,786	8,400	80.79 %	1,411	1,852	76.19 %	382	515	74.17 %
Leg. Dist. 22	5,263	7,410	71.03 %	328	603	54.39 %	86	161	53.42 %
Leg. Dist. 23	5,735	6,445	88.98 %	1,908	2,386	79.97 %	490	622	78.78 %
Leg. Dist. 24	3,533	4,009	88.13 %	993	1,280	77.58 %	253	317	79.81 %
Leg. Dist. 25	6,131	7,712	79.50 %	587	907	64.72 %	195	267	73.03 %
Leg. Dist. 26	3,178	3,836	82.85 %	1,031	1,389	74.23 %	179	246	72.76 %
Leg. Dist. 27	8,607	10,396	82.79 %	886	1,226	72.27 %	245	327	74.92 %
Leg. Dist. 28	4,475	6,108	73.26 %	927	1,393	66.55 %	199	321	61.99 %
Leg. Dist. 29	5,995	7,744	77.41 %	1,043	1,539	67.77 %	174	289	60.21 %
TOTAL:	51,211	63,928	80.11 %	10,208	13,939	73.23 %	2,352	3,249	72.39 %
TOWNS									
Brighton	8,859	9,756	90.81 %	5,267	6,227	84.58 %	652	757	86.13 %
Chili	4,924	5,842	84.29 %	6,155	7,270	84.66 %	517	648	79.78 %
Clarkson	797	966	82.51 %	1,402	1,674	83.75 %	132	173	76.30 %
East Rochester	1,014	1,229	82.51 %	1,007	1,261	79.86 %	143	182	78.57 %
Gates	5,373	6,532	82.26 %	4,904	6,083	80.62 %	481	616	78.08 %
Greece	15,412	18,734	82.27 %	19,514	23,557	82.84 %	1,845	2,383	77.42 %
Hamlin	1,021	1,253	81.48 %	2,035	2,409	84.47 %	194	244	79.51 %
Henrietta	6,616	7,802	84.80 %	6,343	7,477	84.83 %	703	888	79.17 %
Irondequoit	11,065	12,969	85.32 %	9,201	11,170	82.37 %	1,067	1,341	79.57 %
Mendon	1,459	1,695	86.08 %	2,387	2,762	86.42 %	197	243	81.07 %
Ogden	2,672	3,175	84.16 %	4,450	5,203	85.53 %	398	497	80.08 %
Parma	2,000	2,456	81.43 %	3,548	4,214	84.20 %	311	409	76.04 %
Penfield	6,464	7,444	86.84 %	8,231	9,569	86.02 %	822	1,013	81.15 %
Perinton	8,414	9,587	87.76 %	11,644	13,319	87.42 %	1,020	1,215	83.95 %
Pittsford	5,320	5,904	90.11 %	7,010	8,074	86.82 %	549	662	82.93 %
Riga	699	832	84.01 %	1,522	1,780	85.51 %	137	174	78.74 %
Rush	606	684	88.60 %	936	1,083	86.43 %	66	84	78.57 %
Sweden	1,697	1,985	85.49 %	2,107	2,485	84.79 %	236	308	76.62 %
Webster	7,325	8,347	87.76 %	9,073	10,482	86.56 %	961	1,175	81.79 %
Wheatland	824	948	86.92 %	1,101	1,285	85.68 %	107	135	79.26 %
TOTAL:	92,561	108,140	85.59 %	107,837	127,384	84.66 %	10,538	13,147	80.16 %
GRAND TOTAL:	143,772	172,068	83.56 %	118,045	141,323	83.53 %	12,890	16,396	78.62 %

2008 GENERAL ELECTION
VOTER TURNOUT BY PARTY

LT/LD SUMMARY
Part 2 of 2

LEGISLATIVE DISTRICT OR TOWN	CONSERVATIVE			WORKING FAMILIES			BLANK		
	VOTED	REGISTERED	TURNOUT	VOTED	REGISTERED	TURNOUT	VOTED	REGISTERED	TURNOUT
CITY									
Leg. Dist. 06	74	91	81.32 %	8	15	53.33 %	544	784	69.39 %
Leg. Dist. 07	21	26	80.77 %	3	4	75.00 %	244	371	65.77 %
Leg. Dist. 21	76	100	76.00 %	34	57	59.65 %	1,809	2,789	64.86 %
Leg. Dist. 22	31	53	58.49 %	32	71	45.07 %	696	1,611	43.20 %
Leg. Dist. 23	81	105	77.14 %	29	42	69.05 %	2,377	3,133	75.87 %
Leg. Dist. 24	50	62	80.65 %	16	27	59.26 %	1,302	1,811	71.89 %
Leg. Dist. 25	37	56	66.07 %	25	41	60.98 %	1,035	1,836	56.37 %
Leg. Dist. 26	78	104	75.00 %	26	45	57.78 %	940	1,558	60.33 %
Leg. Dist. 27	51	78	65.38 %	42	80	52.50 %	1,230	2,107	58.38 %
Leg. Dist. 28	91	132	68.94 %	44	97	45.36 %	976	2,015	48.44 %
Leg. Dist. 29	67	101	66.34 %	24	74	32.43 %	1,115	2,205	50.57 %
TOTAL:	657	908	72.36 %	283	553	51.18 %	12,268	20,220	60.67 %
TOWNS									
Brighton	175	210	83.33 %	15	22	68.18 %	4,255	5,439	78.23 %
Chili	362	441	82.09 %	23	40	57.50 %	3,381	4,650	72.71 %
Clarkson	103	123	83.74 %	6	11	54.55 %	600	859	69.85 %
East Rochester	75	94	79.79 %	9	18	50.00 %	709	1,023	69.31 %
Gates	315	399	78.95 %	37	57	64.91 %	2,840	4,307	65.94 %
Greece	1,249	1,549	80.63 %	89	158	56.33 %	11,105	15,685	70.80 %
Hamlin	107	129	82.95 %	8	8	100.00 %	830	1,261	65.82 %
Henrietta	359	455	78.90 %	26	35	74.29 %	3,940	5,408	72.86 %
Irondequoit	547	678	80.68 %	45	64	70.31 %	6,521	8,824	73.90 %
Mendon	89	99	89.90 %	4	5	80.00 %	1,165	1,460	79.79 %
Ogden	286	357	80.11 %	19	28	67.86 %	2,353	3,221	73.05 %
Parma	222	266	83.46 %	34	41	82.93 %	2,001	2,813	71.13 %
Penfield	335	401	83.54 %	21	34	61.76 %	5,087	6,528	77.93 %
Perinton	381	466	81.76 %	23	38	60.53 %	6,558	8,378	78.28 %
Pittsford	176	197	89.34 %	10	16	62.50 %	3,790	4,825	78.55 %
Riga	74	87	85.06 %	6	8	75.00 %	693	916	75.66 %
Rush	39	46	84.78 %	4	6	66.67 %	484	651	74.35 %
Sweden	104	130	80.00 %	13	23	56.52 %	1,142	1,573	72.60 %
Webster	465	538	86.43 %	32	41	78.05 %	5,837	7,577	77.04 %
Wheatland	67	78	85.90 %	5	6	83.33 %	609	811	75.09 %
TOTAL:	5,530	6,743	82.01 %	429	659	65.10 %	63,900	86,209	74.12 %
GRAND TOTAL:	6,187	7,651	80.87 %	712	1,212	58.75 %	76,168	106,429	71.57 %

2008 GENERAL ELECTION
VOTER TURNOUT BY AGE

LT/LD SUMMARY
Part 1 of 2

LEGISLATIVE DISTRICT OR TOWN	NDOB			18-24			25-34			35-44		
	VOTED	REGISTERED	TURNOUT	VOTED	REGISTERED	TURNOUT	VOTED	REGISTERED	TURNOUT	VOTED	REGISTERED	TURNOUT
Leg. Dist. 06	42	52	80.77 %	129	197	65.48 %	386	579	66.67 %	391	495	78.99 %
Leg. Dist. 07	20	31	64.52 %	66	99	66.67 %	132	215	61.40 %	147	210	70.00 %
Leg. Dist. 21	161	231	69.70 %	934	1,382	67.58 %	2,222	3,025	73.45 %	2,024	2,698	75.02 %
Leg. Dist. 22	49	68	72.06 %	815	1,341	60.78 %	1,186	1,990	59.60 %	1,155	1,889	61.14 %
Leg. Dist. 23	144	177	81.36 %	750	994	75.45 %	3,021	3,712	81.38 %	1,865	2,270	82.16 %
Leg. Dist. 24	81	105	77.14 %	402	547	73.49 %	1,474	1,838	80.20 %	1,024	1,237	82.78 %
Leg. Dist. 25	73	104	70.19 %	985	1,435	68.64 %	1,592	2,243	70.98 %	1,333	1,830	72.84 %
Leg. Dist. 26	76	96	79.17 %	534	774	68.99 %	1,101	1,572	70.04 %	998	1,368	72.95 %
Leg. Dist. 27	103	141	73.05 %	1,206	1,717	70.24 %	1,917	2,685	71.40 %	2,020	2,666	75.77 %
Leg. Dist. 28	78	116	67.24 %	696	1,225	56.82 %	1,220	1,982	61.55 %	1,211	1,855	65.28 %
Leg. Dist. 29	123	172	71.51 %	889	1,378	64.51 %	1,431	2,256	63.43 %	1,413	2,076	68.06 %
TOTAL:	950	1,293	73.47 %	7,406	11,089	66.79 %	15,682	22,097	70.97 %	13,581	18,594	73.04 %
Brighton	351	417	84.17 %	1,266	1,739	72.80 %	2,459	3,255	75.55 %	2,747	3,217	85.39 %
Chili	279	353	79.04 %	1,065	1,592	66.90 %	1,917	2,845	67.38 %	2,463	3,105	79.32 %
Clarkson	5	9	55.56 %	204	297	68.69 %	282	456	61.84 %	620	791	78.38 %
East Rochester	114	128	89.06 %	197	342	57.60 %	475	656	72.41 %	485	660	73.48 %
Gates	104	149	69.80 %	803	1,232	65.18 %	1,710	2,612	65.47 %	2,041	2,831	72.09 %
Greece	901	1,202	74.96 %	3,370	5,088	66.23 %	5,705	8,710	65.50 %	7,129	9,336	76.36 %
Hamlin	21	30	70.00 %	320	493	64.91 %	424	684	61.99 %	684	900	76.00 %
Henrietta	73	102	71.57 %	1,766	2,404	73.46 %	2,321	3,236	71.72 %	2,926	3,714	78.78 %
Irondequoit	597	838	71.24 %	1,749	2,678	65.31 %	3,465	4,821	71.87 %	4,308	5,369	80.24 %
Mendon	15	26	57.69 %	368	636	57.86 %	333	562	59.25 %	915	1,026	89.18 %
Ogden	105	145	72.41 %	751	1,102	68.15 %	1,098	1,627	67.49 %	1,639	2,078	78.87 %
Parma	33	59	55.93 %	586	967	60.60 %	826	1,284	64.33 %	1,267	1,654	76.60 %
Penfield	299	396	75.51 %	1,344	1,968	68.29 %	1,871	2,780	67.30 %	3,364	3,983	84.46 %
Perinton	87	135	64.44 %	1,712	2,725	62.83 %	2,447	3,616	67.67 %	4,583	5,398	84.90 %
Pittsford	140	172	81.40 %	1,076	1,644	65.45 %	1,030	1,693	60.84 %	2,478	2,924	84.75 %
Riga	11	21	52.38 %	224	328	68.29 %	303	462	65.58 %	489	600	81.50 %
Rush	63	79	79.75 %	130	197	65.99 %	151	255	59.22 %	259	332	78.01 %
Sweden	34	50	68.00 %	596	814	73.22 %	630	926	68.03 %	735	935	78.61 %
Webster	312	405	77.04 %	1,383	2,051	67.43 %	2,198	3,198	68.73 %	4,020	4,828	83.26 %
Wheatland	14	25	56.00 %	212	303	69.97 %	320	474	67.51 %	370	459	80.61 %
TOTAL:	3,558	4,741	75.05 %	19,122	28,600	66.86 %	29,965	44,152	67.87 %	43,522	54,140	80.39 %
GRAND TOTAL:	4,508	6,034	74.71 %	26,528	39,689	66.84 %	45,647	66,249	68.90 %	57,103	72,734	78.51 %

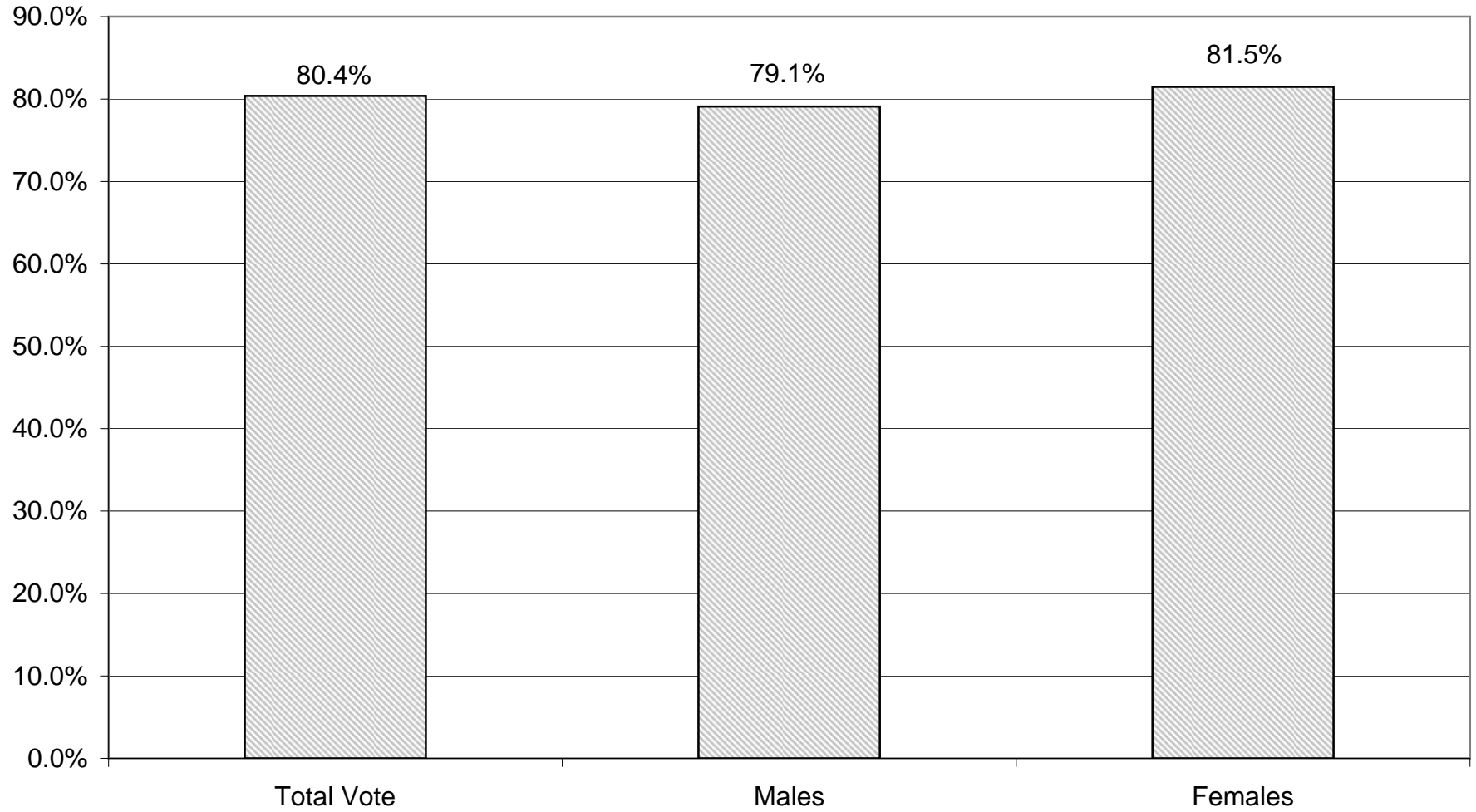
2008 GENERAL ELECTION
VOTER TURNOUT BY AGE

LT/LD SUMMARY
Part 2 of 2

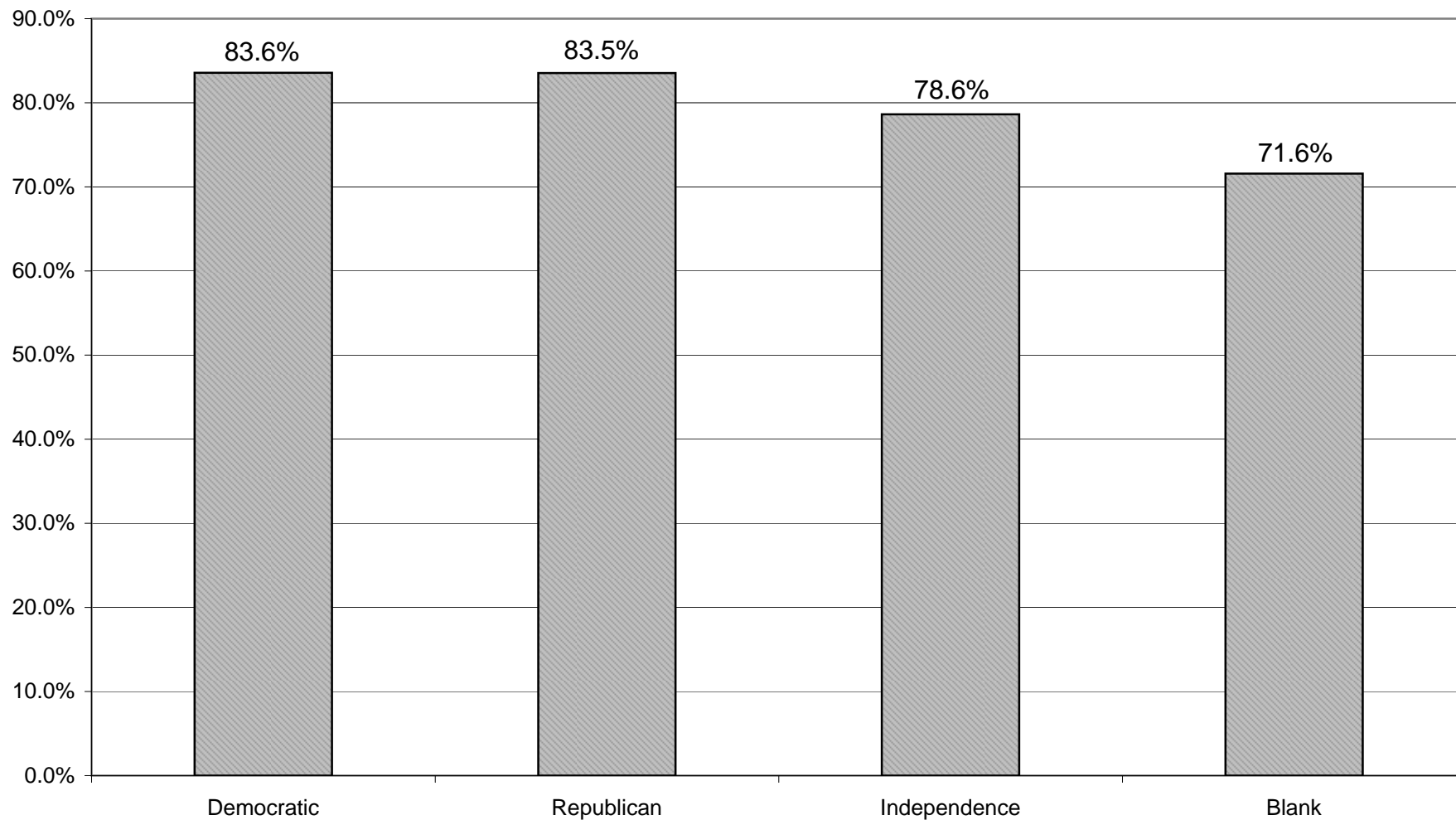
LEGISLATIVE
DISTRICT

OR TOWN	45-54			55-64			65+		
	VOTED	REGISTERED	TURNOUT	VOTED	REGISTERED	TURNOUT	VOTED	REGISTERED	TURNOUT
Leg. Dist. 06	511	634	80.60 %	476	564	84.40 %	480	569	84.36 %
Leg. Dist. 07	231	294	78.57 %	306	371	82.48 %	328	378	86.77 %
Leg. Dist. 21	2,038	2,549	79.95 %	1,683	2,040	82.50 %	1,436	1,970	72.89 %
Leg. Dist. 22	1,338	1,957	68.37 %	1,037	1,459	71.08 %	856	1,339	63.93 %
Leg. Dist. 23	1,709	2,013	84.90 %	1,746	1,953	89.40 %	1,385	1,759	78.74 %
Leg. Dist. 24	1,103	1,308	84.33 %	1,125	1,280	87.89 %	938	1,285	73.00 %
Leg. Dist. 25	1,476	1,968	75.00 %	1,274	1,577	80.79 %	1,277	1,719	74.29 %
Leg. Dist. 26	1,161	1,453	79.90 %	880	1,043	84.37 %	682	994	68.61 %
Leg. Dist. 27	2,344	2,842	82.48 %	1,880	2,181	86.20 %	1,591	2,094	75.98 %
Leg. Dist. 28	1,466	2,090	70.14 %	1,134	1,516	74.80 %	907	1,394	65.06 %
Leg. Dist. 29	1,714	2,315	74.04 %	1,495	1,904	78.52 %	1,353	1,905	71.02 %
TOTAL:	15,091	19,423	77.70 %	13,036	15,888	82.05 %	11,233	15,406	72.91 %
Brighton	3,759	4,137	90.86 %	3,795	4,073	93.17 %	4,846	5,323	91.04 %
Chili	3,458	3,953	87.48 %	2,989	3,347	89.30 %	3,191	3,583	89.06 %
Clarkson	762	897	84.95 %	572	649	88.14 %	595	701	84.88 %
East Rochester	629	761	82.65 %	527	621	84.86 %	530	643	82.43 %
Gates	2,839	3,481	81.56 %	2,564	2,976	86.16 %	3,889	4,418	88.03 %
Greece	10,754	12,721	84.54 %	9,922	11,317	87.67 %	11,433	13,275	86.12 %
Hamlin	1,101	1,309	84.11 %	932	1,040	89.62 %	713	826	86.32 %
Henrietta	3,758	4,418	85.06 %	3,333	3,735	89.24 %	3,810	4,374	87.11 %
Irondequoit	5,791	6,705	86.37 %	5,620	6,332	88.76 %	6,916	7,991	86.55 %
Mendon	1,551	1,684	92.10 %	1,139	1,228	92.75 %	980	1,093	89.66 %
Ogden	2,676	3,070	87.17 %	2,064	2,322	88.89 %	1,845	2,087	88.40 %
Parma	2,110	2,427	86.94 %	1,602	1,816	88.22 %	1,692	1,941	87.17 %
Penfield	5,020	5,615	89.40 %	4,348	4,751	91.52 %	4,714	5,223	90.25 %
Perinton	6,608	7,262	90.99 %	5,968	6,448	92.56 %	6,635	7,279	91.15 %
Pittsford	4,106	4,459	92.08 %	3,483	3,736	93.23 %	4,542	4,873	93.21 %
Riga	838	974	86.04 %	673	731	92.07 %	593	675	87.85 %
Rush	567	632	89.72 %	501	539	92.95 %	464	498	93.17 %
Sweden	1,173	1,348	87.02 %	1,131	1,236	91.50 %	1,000	1,150	86.96 %
Webster	5,642	6,352	88.82 %	4,679	5,126	91.28 %	5,459	5,981	91.27 %
Wheatland	650	720	90.28 %	553	607	91.10 %	594	628	94.59 %
TOTAL:	63,792	72,925	87.48 %	56,395	62,630	90.04 %	64,441	72,562	88.81 %
GRAND TOTAL:	78,883	92,348	85.42 %	69,431	78,518	88.43 %	75,674	87,968	86.02 %

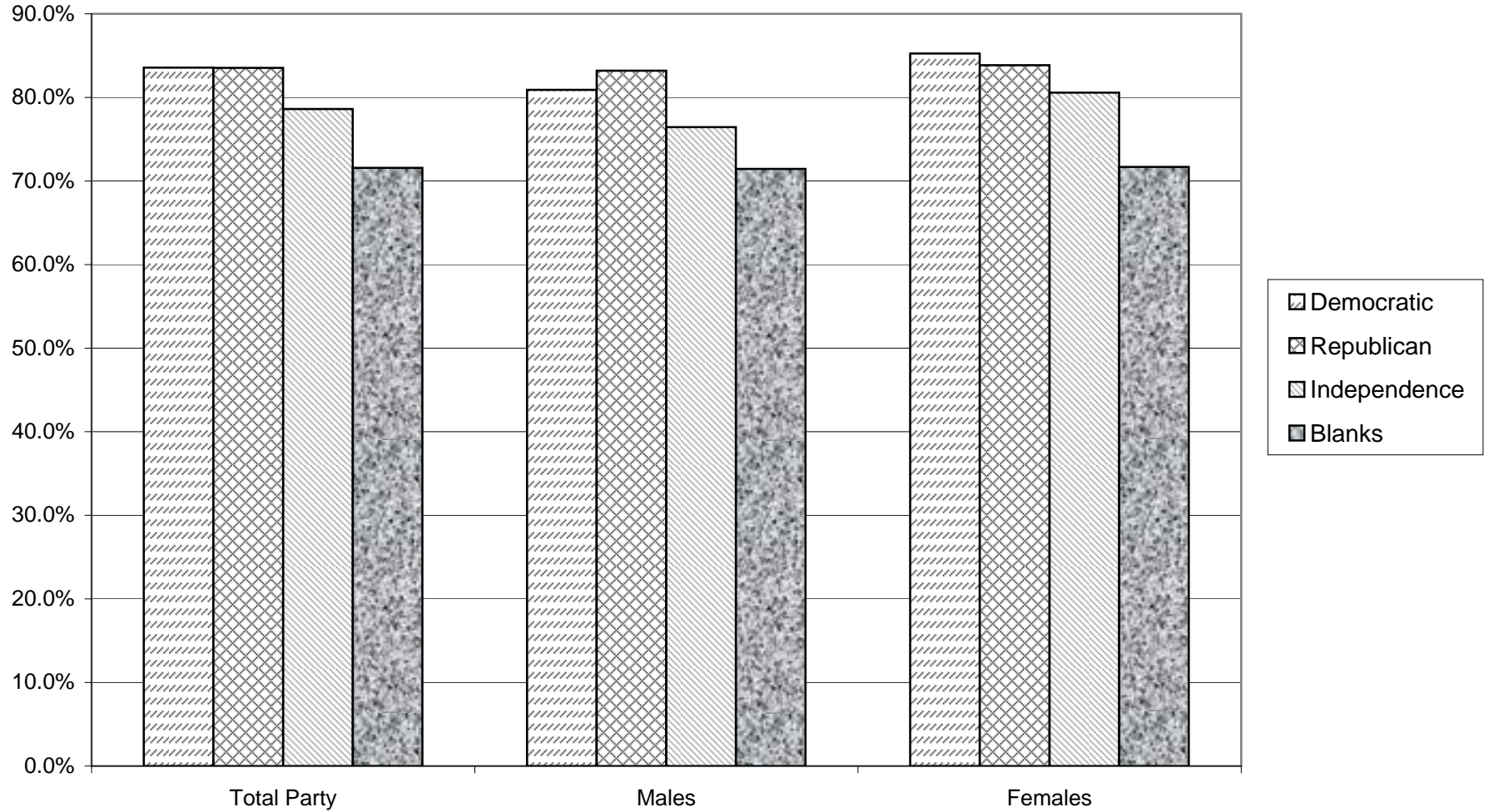
VOTER TURNOUT - TOTAL AND BY GENDER 2008 GENERAL ELECTION



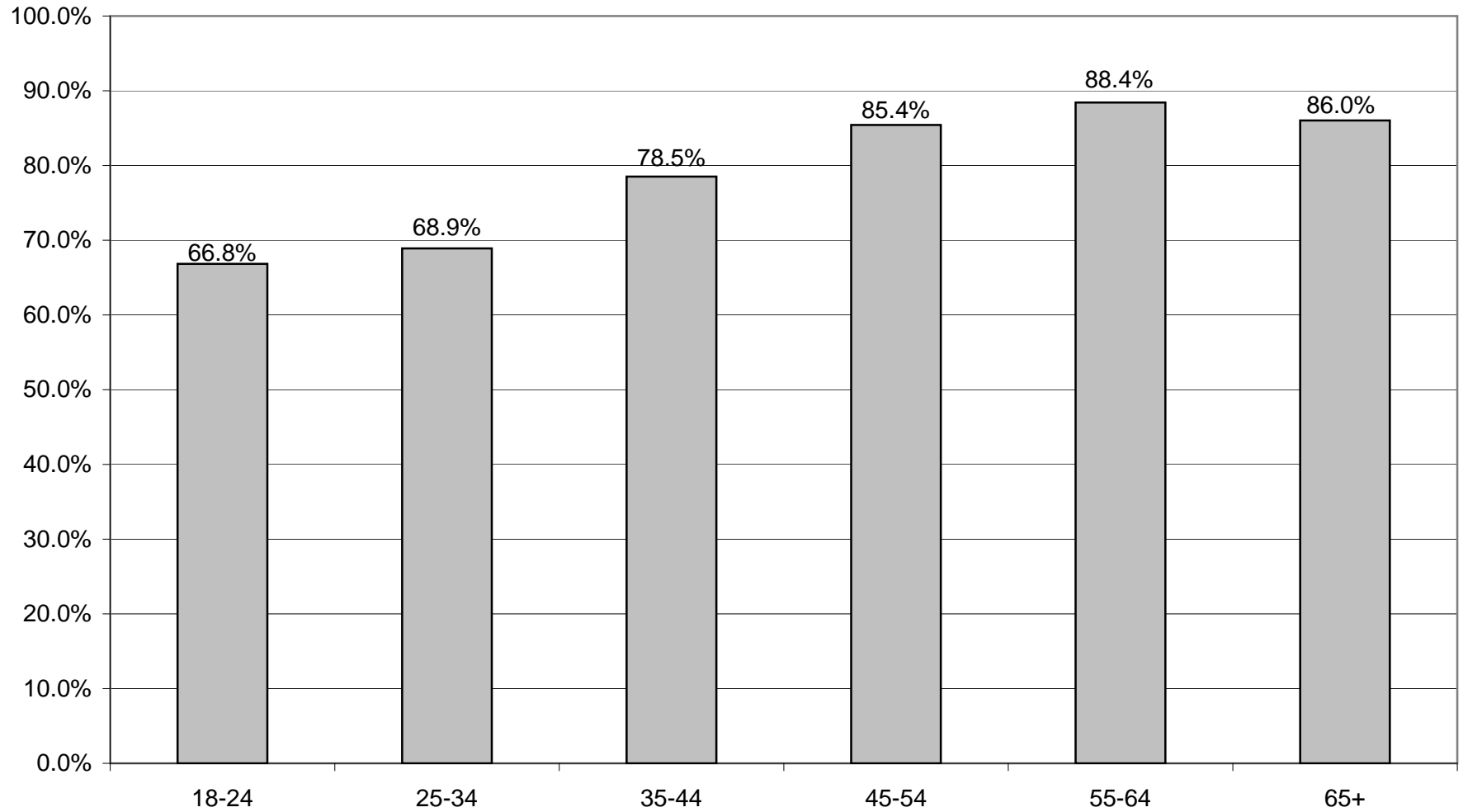
VOTER TURNOUT BY PARTY 2008 GENERAL ELECTION



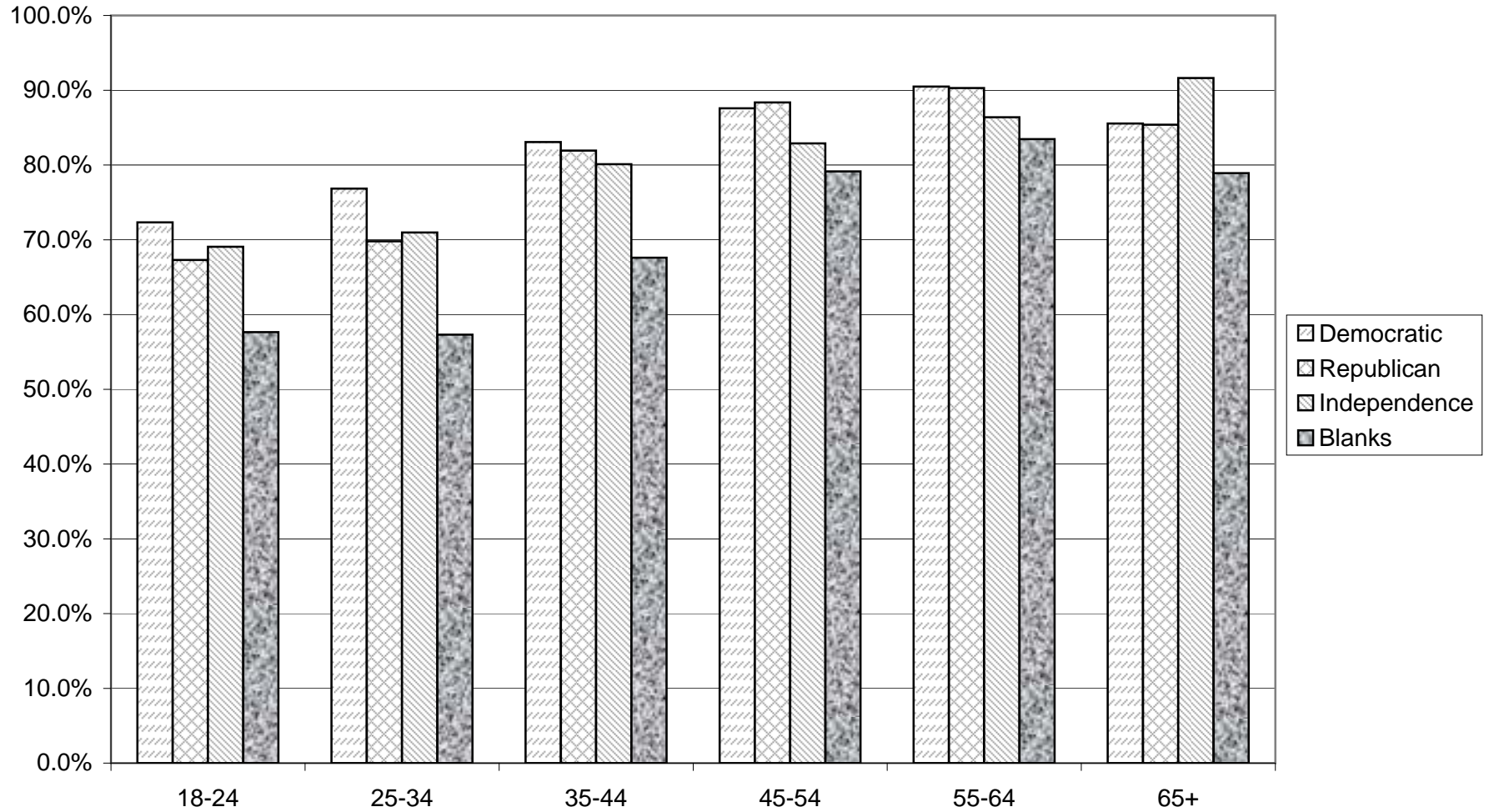
COMPARISON OF TOTAL AND GENDER TURNOUT 2008 GENERAL ELECTION



VOTER TURNOUT BY AGE GROUP 2008 GENERAL ELECTION



COMPARISON OF TURNOUT BY AGE GROUP 2008 GENERAL ELECTION



DEMOCRATIC SUMMARY

2008 GENERAL ELECTION
DEMOCRATIC TURNOUT BY GENDER

LT/LD SUMMARY

LEGISLATIVE DISTRICT OR TOWN CITY	TOTAL VOTERS			MALES			FEMALES		
	VOTED	REGISTERED	TURNOUT	VOTED	REGISTERED	TURNOUT	VOTED	REGISTERED	TURNOUT
Leg. Dist. 06	982	1,201	81.77 %	354	446	79.37 %	628	755	83.18 %
Leg. Dist. 07	526	667	78.86 %	199	265	75.09 %	327	402	81.34 %
Leg. Dist. 21	6,786	8,400	80.79 %	2,582	3,381	76.37 %	4,204	5,019	83.76 %
Leg. Dist. 22	5,263	7,410	71.03 %	1,913	2,994	63.89 %	3,350	4,416	75.86 %
Leg. Dist. 23	5,735	6,445	88.98 %	2,478	2,816	88.00 %	3,257	3,629	89.75 %
Leg. Dist. 24	3,533	4,009	88.13 %	1,449	1,687	85.89 %	2,084	2,322	89.75 %
Leg. Dist. 25	6,131	7,712	79.50 %	2,402	3,211	74.81 %	3,729	4,501	82.85 %
Leg. Dist. 26	3,178	3,836	82.85 %	1,169	1,488	78.56 %	2,009	2,348	85.56 %
Leg. Dist. 27	8,607	10,396	82.79 %	3,216	4,133	77.81 %	5,391	6,263	86.08 %
Leg. Dist. 28	4,475	6,108	73.26 %	1,645	2,382	69.06 %	2,830	3,726	75.95 %
Leg. Dist. 29	5,995	7,744	77.41 %	2,227	3,013	73.91 %	3,768	4,731	79.64 %
TOTAL:	51,211	63,928	80.11 %	19,634	25,816	76.05 %	31,577	38,112	82.85 %
TOWNS									
Brighton	8,859	9,756	90.81 %	3,408	3,815	89.33 %	5,451	5,941	91.75 %
Chili	4,924	5,842	84.29 %	1,977	2,397	82.48 %	2,947	3,445	85.54 %
Clarkson	797	966	82.51 %	300	379	79.16 %	497	587	84.67 %
East Rochester	1,014	1,229	82.51 %	380	478	79.50 %	634	751	84.42 %
Gates	5,373	6,532	82.26 %	2,029	2,542	79.82 %	3,344	3,990	83.81 %
Greece	15,412	18,734	82.27 %	5,742	7,124	80.60 %	9,670	11,610	83.29 %
Hamlin	1,021	1,253	81.48 %	384	485	79.18 %	637	768	82.94 %
Henrietta	6,616	7,802	84.80 %	2,624	3,144	83.46 %	3,992	4,658	85.70 %
Irondequoit	11,065	12,969	85.32 %	4,006	4,800	83.46 %	7,059	8,169	86.41 %
Mendon	1,459	1,695	86.08 %	536	645	83.10 %	923	1,050	87.90 %
Ogden	2,672	3,175	84.16 %	1,007	1,240	81.21 %	1,665	1,935	86.05 %
Parma	2,000	2,456	81.43 %	768	974	78.85 %	1,232	1,482	83.13 %
Penfield	6,464	7,444	86.84 %	2,425	2,862	84.73 %	4,039	4,582	88.15 %
Perinton	8,414	9,587	87.76 %	3,129	3,607	86.75 %	5,285	5,980	88.38 %
Pittsford	5,320	5,904	90.11 %	2,020	2,262	89.30 %	3,300	3,642	90.61 %
Riga	699	832	84.01 %	263	321	81.93 %	436	511	85.32 %
Rush	606	684	88.60 %	246	281	87.54 %	360	403	89.33 %
Sweden	1,697	1,985	85.49 %	670	784	85.46 %	1,027	1,201	85.51 %
Webster	7,325	8,347	87.76 %	2,756	3,167	87.02 %	4,569	5,180	88.20 %
Wheatland	824	948	86.92 %	333	393	84.73 %	491	555	88.47 %
TOTAL:	92,561	108,140	85.59 %	35,003	41,700	83.94 %	57,558	66,440	86.63 %
GRAND TOTAL:	143,772	172,068	83.56 %	54,637	67,516	80.92 %	89,135	104,552	85.25 %

2008 GENERAL ELECTION
DEMOCRATIC TURNOUT BY AGE

LT/LD SUMMARY
Part 1 of 2

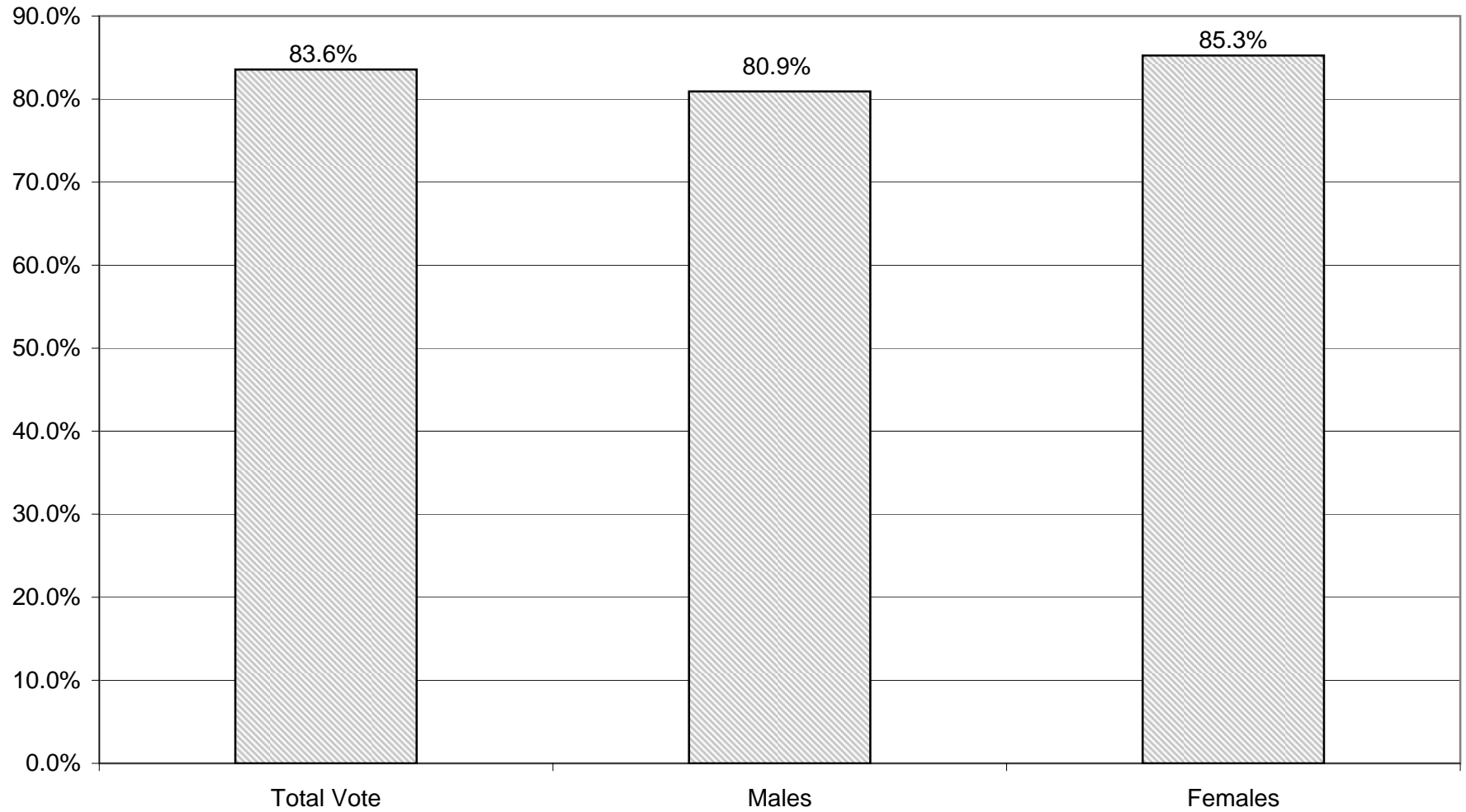
LEGISLATIVE DISTRICT OR TOWN CITY	NDOB			18-24			25-34			35-44		
	VOTED	REGISTERED	TURNOUT	VOTED	REGISTERED	TURNOUT	VOTED	REGISTERED	TURNOUT	VOTED	REGISTERED	TURNOUT
Leg. Dist. 06	15	18	83.33 %	61	92	66.30 %	171	231	74.03 %	167	185	90.27 %
Leg. Dist. 07	4	7	57.14 %	32	42	76.19 %	56	89	62.92 %	58	77	75.32 %
Leg. Dist. 21	75	95	78.95 %	661	910	72.64 %	1,365	1,737	78.58 %	1,341	1,642	81.67 %
Leg. Dist. 22	32	45	71.11 %	626	962	65.07 %	959	1,420	67.54 %	932	1,350	69.04 %
Leg. Dist. 23	58	70	82.86 %	416	516	80.62 %	1,580	1,788	88.37 %	957	1,062	90.11 %
Leg. Dist. 24	33	44	75.00 %	253	318	79.56 %	817	918	89.00 %	613	675	90.81 %
Leg. Dist. 25	49	63	77.78 %	735	963	76.32 %	1,115	1,439	77.48 %	1,028	1,319	77.94 %
Leg. Dist. 26	26	32	81.25 %	365	479	76.20 %	680	842	80.76 %	607	739	82.14 %
Leg. Dist. 27	52	71	73.24 %	931	1,255	74.18 %	1,459	1,820	80.16 %	1,591	1,963	81.05 %
Leg. Dist. 28	32	48	66.67 %	498	772	64.51 %	849	1,194	71.11 %	845	1,102	76.68 %
Leg. Dist. 29	58	80	72.50 %	672	921	72.96 %	1,040	1,421	73.19 %	1,024	1,353	75.68 %
TOTAL:	434	573	75.74 %	5,250	7,230	72.61 %	10,091	12,899	78.23 %	9,163	11,467	79.91 %
TOWNS												
Brighton	88	100	88.00 %	671	866	77.48 %	1,120	1,376	81.40 %	1,272	1,384	91.91 %
Chili	84	106	79.25 %	354	509	69.55 %	676	924	73.16 %	763	930	82.04 %
Clarkson	2	4	50.00 %	56	83	67.47 %	91	130	70.00 %	160	187	85.56 %
East Rochester	39	44	88.64 %	82	133	61.65 %	183	221	82.81 %	181	224	80.80 %
Gates	31	45	68.89 %	349	481	72.56 %	706	959	73.62 %	793	1,011	78.44 %
Greece	227	290	78.28 %	1,272	1,759	72.31 %	2,095	2,835	73.90 %	2,192	2,770	79.13 %
Hamlin	3	7	42.86 %	96	139	69.06 %	132	179	73.74 %	160	200	80.00 %
Henrietta	22	28	78.57 %	830	1,083	76.64 %	907	1,150	78.87 %	1,046	1,256	83.28 %
Irondequoit	173	244	70.90 %	791	1,132	69.88 %	1,409	1,771	79.56 %	1,707	1,957	87.23 %
Mendon	2	3	66.67 %	130	226	57.52 %	107	166	64.46 %	270	289	93.43 %
Ogden	28	42	66.67 %	219	293	74.74 %	347	455	76.26 %	404	505	80.00 %
Parma	9	13	69.23 %	170	251	67.73 %	232	333	69.67 %	303	395	76.71 %
Penfield	78	109	71.56 %	510	696	73.28 %	636	873	72.85 %	959	1,090	87.98 %
Perinton	23	34	67.65 %	652	961	67.85 %	875	1,185	73.84 %	1,378	1,526	90.30 %
Pittsford	31	41	75.61 %	434	608	71.38 %	388	567	68.43 %	797	864	92.25 %
Riga	2	3	66.67 %	50	69	72.46 %	81	119	68.07 %	100	120	83.33 %
Rush	15	17	88.24 %	59	73	80.82 %	57	75	76.00 %	77	87	88.51 %
Sweden	8	12	66.67 %	264	320	82.50 %	234	308	75.97 %	219	254	86.22 %
Webster	101	135	74.81 %	477	673	70.88 %	769	986	77.99 %	1,229	1,384	88.80 %
Wheatland	3	6	50.00 %	74	98	75.51 %	103	131	78.63 %	103	123	83.74 %
TOTAL:	969	1,283	75.53 %	7,540	10,453	72.13 %	11,148	14,743	75.62 %	14,113	16,556	85.24 %
GRAND TOTAL:	1,403	1,856	75.59 %	12,790	17,683	72.33 %	21,239	27,642	76.84 %	23,276	28,023	83.06 %

2008 GENERAL ELECTION
DEMOCRATIC TURNOUT BY AGE

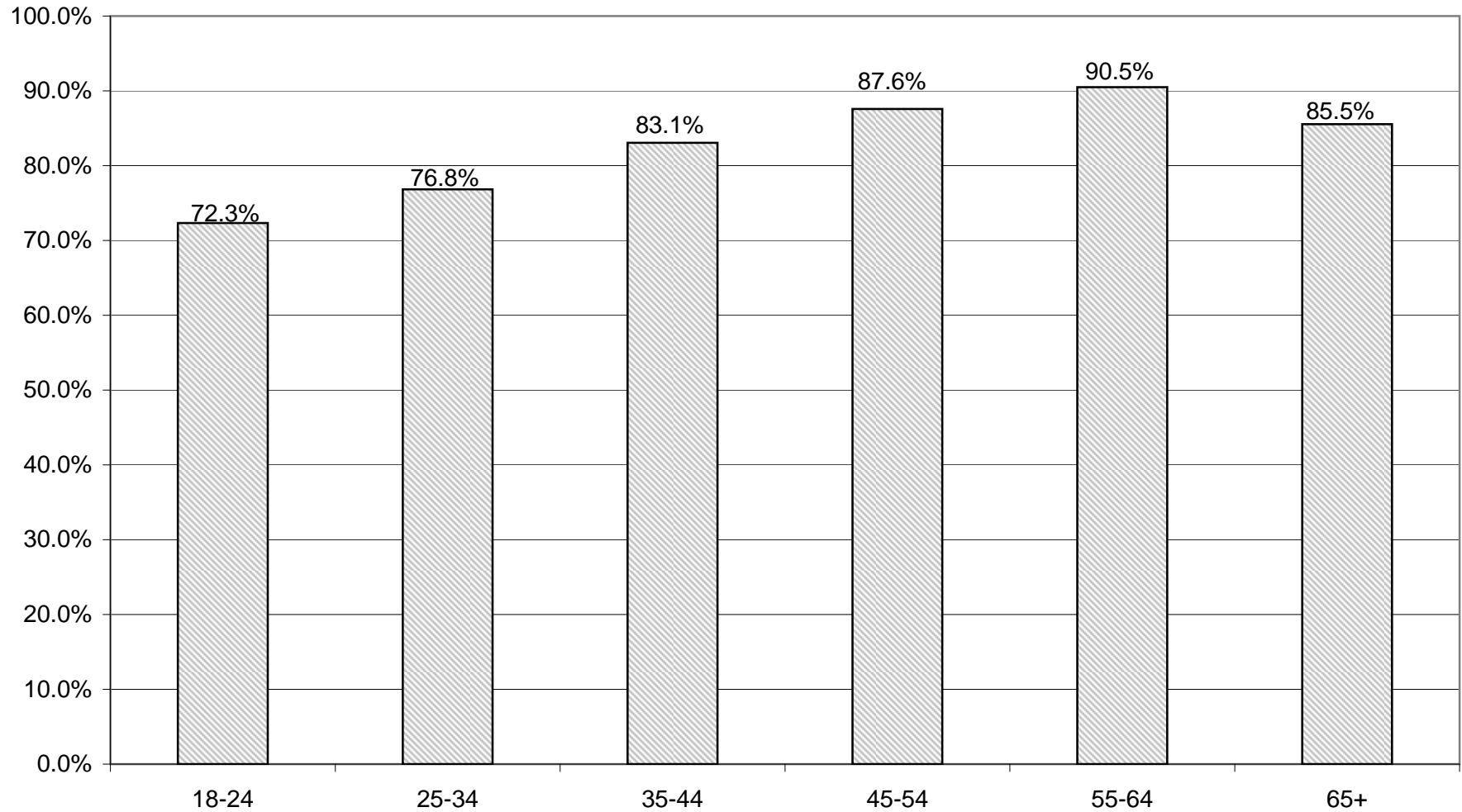
LT/LD SUMMARY
Part 2 of 2

LEGISLATIVE DISTRICT OR TOWN CITY	45-54			55-64			65+		
	VOTED	REGISTERED	TURNOUT	VOTED	REGISTERED	TURNOUT	VOTED	REGISTERED	TURNOUT
Leg. Dist. 06	188	235	80.00 %	194	222	87.39 %	186	218	85.32 %
Leg. Dist. 07	95	121	78.51 %	137	158	86.71 %	144	173	83.24 %
Leg. Dist. 21	1,355	1,624	83.44 %	1,102	1,298	84.90 %	887	1,094	81.08 %
Leg. Dist. 22	1,126	1,502	74.97 %	863	1,152	74.91 %	725	979	74.06 %
Leg. Dist. 23	928	1,045	88.80 %	1,024	1,103	92.84 %	772	861	89.66 %
Leg. Dist. 24	652	730	89.32 %	694	763	90.96 %	471	561	83.96 %
Leg. Dist. 25	1,190	1,478	80.51 %	981	1,164	84.28 %	1,033	1,286	80.33 %
Leg. Dist. 26	653	759	86.03 %	489	556	87.95 %	358	429	83.45 %
Leg. Dist. 27	1,873	2,137	87.65 %	1,450	1,628	89.07 %	1,251	1,522	82.19 %
Leg. Dist. 28	957	1,286	74.42 %	723	927	77.99 %	571	779	73.30 %
Leg. Dist. 29	1,240	1,526	81.26 %	1,026	1,230	83.41 %	935	1,213	77.08 %
TOTAL:	10,257	12,443	82.43 %	8,683	10,201	85.12 %	7,333	9,115	80.45 %
TOWNS									
Brighton	1,775	1,849	96.00 %	1,868	1,926	96.99 %	2,065	2,255	91.57 %
Chili	1,013	1,113	91.02 %	1,000	1,084	92.25 %	1,034	1,176	87.93 %
Clarkson	157	177	88.70 %	174	196	88.78 %	157	189	83.07 %
East Rochester	188	219	85.84 %	177	192	92.19 %	164	196	83.67 %
Gates	967	1,136	85.12 %	1,010	1,104	91.49 %	1,517	1,796	84.47 %
Greece	3,074	3,551	86.57 %	3,161	3,525	89.67 %	3,391	4,004	84.69 %
Hamlin	246	286	86.01 %	219	237	92.41 %	165	205	80.49 %
Henrietta	1,246	1,406	88.62 %	1,239	1,324	93.58 %	1,326	1,555	85.27 %
Irondequoit	2,176	2,436	89.33 %	2,211	2,420	91.36 %	2,598	3,009	86.34 %
Mendon	396	418	94.74 %	339	352	96.31 %	215	241	89.21 %
Ogden	630	697	90.39 %	561	610	91.97 %	483	573	84.29 %
Parma	488	549	88.89 %	406	449	90.42 %	392	466	84.12 %
Penfield	1,357	1,456	93.20 %	1,457	1,535	94.92 %	1,467	1,685	87.06 %
Perinton	1,823	1,959	93.06 %	1,858	1,966	94.51 %	1,805	1,956	92.28 %
Pittsford	1,242	1,279	97.11 %	1,188	1,226	96.90 %	1,240	1,319	94.01 %
Riga	182	211	86.26 %	162	170	95.29 %	122	140	87.14 %
Rush	130	141	92.20 %	156	163	95.71 %	112	128	87.50 %
Sweden	309	344	89.83 %	354	377	93.90 %	309	370	83.51 %
Webster	1,498	1,628	92.01 %	1,513	1,604	94.33 %	1,738	1,937	89.73 %
Wheatland	181	198	91.41 %	164	172	95.35 %	196	220	89.09 %
TOTAL:	19,078	21,053	90.62 %	19,217	20,632	93.14 %	20,496	23,420	87.51 %
GRAND TOTAL:	29,335	33,496	87.58 %	27,900	30,833	90.49 %	27,829	32,535	85.54 %

DEMOCRATIC TURNOUT - TOTAL AND GENDER 2008 GENERAL ELECTION



DEMOCRATIC TURNOUT BY AGE GROUP 2008 GENERAL ELECTION



REPUBLICAN SUMMARY

2008 GENERAL ELECTION
REPUBLICAN TURNOUT BY GENDER

LT/LD SUMMARY

LEGISLATIVE DISTRICT OR TOWN CITY	TOTAL VOTERS			MALES			FEMALES		
	VOTED	REGISTERED	TURNOUT	VOTED	REGISTERED	TURNOUT	VOTED	REGISTERED	TURNOUT
Leg. Dist. 06	716	886	80.81 %	334	429	77.86 %	382	457	83.59 %
Leg. Dist. 07	378	478	79.08 %	190	250	76.00 %	188	228	82.46 %
Leg. Dist. 21	1,411	1,852	76.19 %	692	907	76.30 %	719	945	76.08 %
Leg. Dist. 22	328	603	54.39 %	143	287	49.83 %	185	316	58.54 %
Leg. Dist. 23	1,908	2,386	79.97 %	1,049	1,330	78.87 %	859	1,056	81.34 %
Leg. Dist. 24	993	1,280	77.58 %	481	637	75.51 %	512	643	79.63 %
Leg. Dist. 25	587	907	64.72 %	320	505	63.37 %	267	402	66.42 %
Leg. Dist. 26	1,031	1,389	74.23 %	513	697	73.60 %	518	692	74.86 %
Leg. Dist. 27	886	1,226	72.27 %	440	621	70.85 %	446	605	73.72 %
Leg. Dist. 28	927	1,393	66.55 %	468	706	66.29 %	459	687	66.81 %
Leg. Dist. 29	1,043	1,539	67.77 %	485	738	65.72 %	558	801	69.66 %
TOTAL:	10,208	13,939	73.23 %	5,115	7,107	71.97 %	5,093	6,832	74.55 %
TOWNS									
Brighton	5,267	6,227	84.58 %	2,572	3,027	84.97 %	2,695	3,200	84.22 %
Chili	6,155	7,270	84.66 %	3,053	3,647	83.71 %	3,102	3,623	85.62 %
Clarkson	1,402	1,674	83.75 %	715	862	82.95 %	687	812	84.61 %
East Rochester	1,007	1,261	79.86 %	485	609	79.64 %	522	652	80.06 %
Gates	4,904	6,083	80.62 %	2,368	2,968	79.78 %	2,536	3,115	81.41 %
Greece	19,514	23,557	82.84 %	9,731	11,716	83.06 %	9,783	11,841	82.62 %
Hamlin	2,035	2,409	84.47 %	1,051	1,250	84.08 %	984	1,159	84.90 %
Henrietta	6,343	7,477	84.83 %	3,197	3,804	84.04 %	3,146	3,673	85.65 %
Irondequoit	9,201	11,170	82.37 %	4,506	5,472	82.35 %	4,695	5,698	82.40 %
Mendon	2,387	2,762	86.42 %	1,274	1,477	86.26 %	1,113	1,285	86.61 %
Ogden	4,450	5,203	85.53 %	2,249	2,615	86.00 %	2,201	2,588	85.05 %
Parma	3,548	4,214	84.20 %	1,827	2,187	83.54 %	1,721	2,027	84.90 %
Penfield	8,231	9,569	86.02 %	4,186	4,879	85.80 %	4,045	4,690	86.25 %
Perinton	11,644	13,319	87.42 %	5,826	6,735	86.50 %	5,818	6,584	88.37 %
Pittsford	7,010	8,074	86.82 %	3,562	4,118	86.50 %	3,448	3,956	87.16 %
Riga	1,522	1,780	85.51 %	771	890	86.63 %	751	890	84.38 %
Rush	936	1,083	86.43 %	489	568	86.09 %	447	515	86.80 %
Sweden	2,107	2,485	84.79 %	1,037	1,245	83.29 %	1,070	1,240	86.29 %
Webster	9,073	10,482	86.56 %	4,582	5,283	86.73 %	4,491	5,199	86.38 %
Wheatland	1,101	1,285	85.68 %	547	625	87.52 %	554	660	83.94 %
TOTAL:	107,837	127,384	84.66 %	54,028	63,977	84.45 %	53,809	63,407	84.86 %
GRAND TOTAL:	118,045	141,323	83.53 %	59,143	71,084	83.20 %	58,902	70,239	83.86 %

2008 GENERAL ELECTION
REPUBLICAN TURNOUT BY AGE

LT/LD SUMMARY
Part 1 of 2

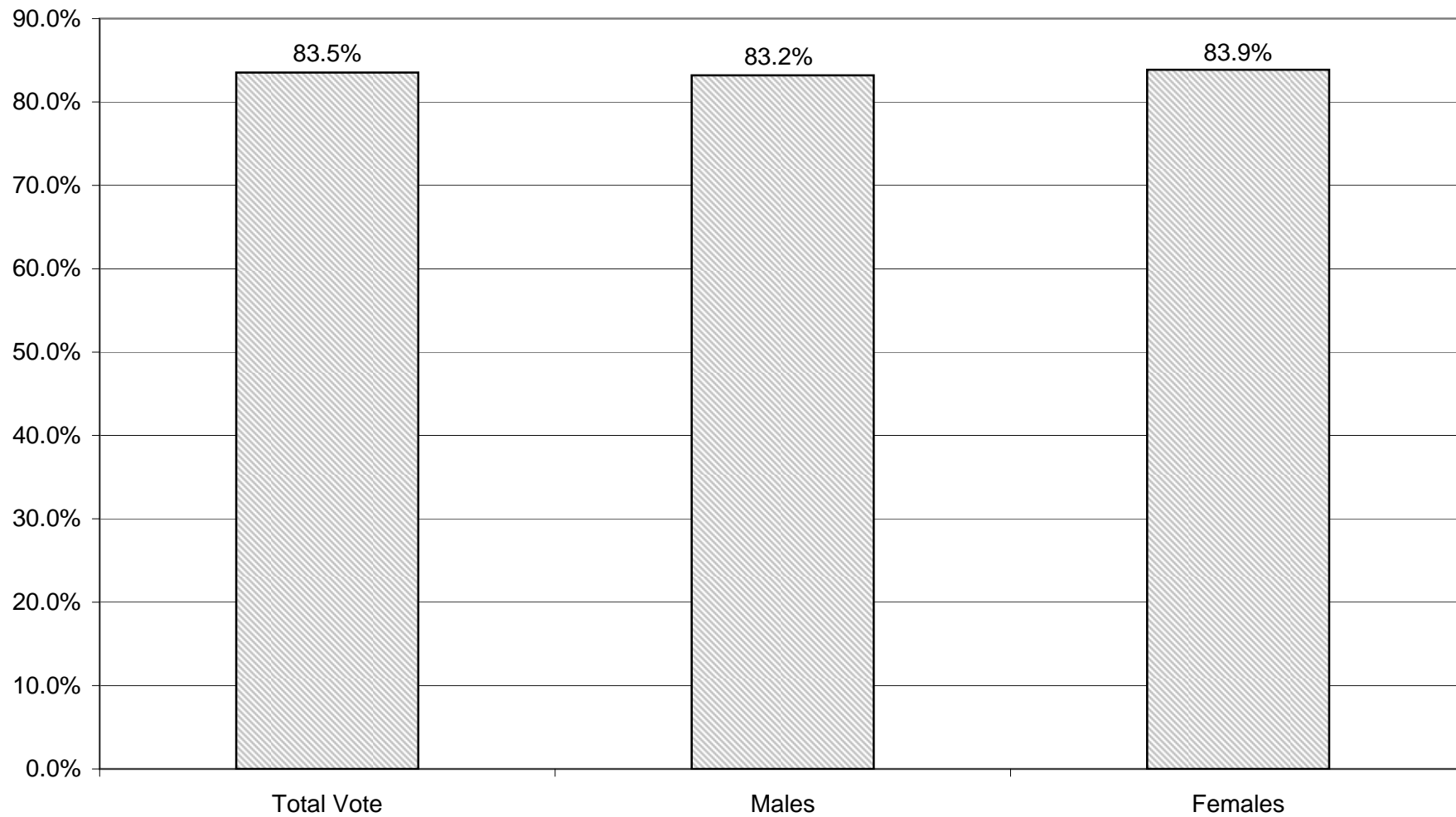
LEGISLATIVE DISTRICT OR TOWN CITY	NDOB			18-24			25-34			35-44		
	VOTED	REGISTERED	TURNOUT	VOTED	REGISTERED	TURNOUT	VOTED	REGISTERED	TURNOUT	VOTED	REGISTERED	TURNOUT
Leg. Dist. 06	23	30	76.67 %	31	42	73.81 %	81	122	66.39 %	99	127	77.95 %
Leg. Dist. 07	16	24	66.67 %	11	20	55.00 %	23	40	57.50 %	39	59	66.10 %
Leg. Dist. 21	78	127	61.42 %	51	87	58.62 %	227	307	73.94 %	223	312	71.47 %
Leg. Dist. 22	12	18	66.67 %	28	40	70.00 %	32	85	37.65 %	53	108	49.07 %
Leg. Dist. 23	71	91	78.02 %	95	129	73.64 %	439	574	76.48 %	344	440	78.18 %
Leg. Dist. 24	39	52	75.00 %	32	48	66.67 %	157	217	72.35 %	148	183	80.87 %
Leg. Dist. 25	21	37	56.76 %	36	70	51.43 %	117	178	65.73 %	90	132	68.18 %
Leg. Dist. 26	45	59	76.27 %	47	79	59.49 %	131	190	68.95 %	150	235	63.83 %
Leg. Dist. 27	43	59	72.88 %	61	91	67.03 %	125	209	59.81 %	113	160	70.63 %
Leg. Dist. 28	41	59	69.49 %	39	71	54.93 %	95	173	54.91 %	128	233	54.94 %
Leg. Dist. 29	59	83	71.08 %	40	81	49.38 %	98	174	56.32 %	135	223	60.54 %
TOTAL:	448	639	70.11 %	471	758	62.14 %	1,525	2,269	67.21 %	1,522	2,212	68.81 %
TOWNS												
Brighton	231	281	82.21 %	178	254	70.08 %	514	690	74.49 %	690	803	85.93 %
Chili	181	226	80.09 %	311	449	69.27 %	561	775	72.39 %	993	1,179	84.22 %
Clarkson	3	5	60.00 %	75	98	76.53 %	90	141	63.83 %	278	338	82.25 %
East Rochester	66	74	89.19 %	35	59	59.32 %	106	144	73.61 %	149	215	69.30 %
Gates	71	98	72.45 %	163	243	67.08 %	415	609	68.14 %	646	851	75.91 %
Greece	605	832	72.72 %	923	1,325	69.66 %	1,533	2,234	68.62 %	2,703	3,342	80.88 %
Hamlin	18	23	78.26 %	103	153	67.32 %	149	231	64.50 %	325	395	82.28 %
Henrietta	43	62	69.35 %	339	453	74.83 %	617	834	73.98 %	1,000	1,203	83.13 %
Irondequoit	364	517	70.41 %	330	504	65.48 %	781	1,054	74.10 %	1,258	1,567	80.28 %
Mendon	9	19	47.37 %	106	178	59.55 %	119	199	59.80 %	374	430	86.98 %
Ogden	63	86	73.26 %	229	328	69.82 %	370	525	70.48 %	727	846	85.93 %
Parma	21	42	50.00 %	190	277	68.59 %	280	386	72.54 %	526	635	82.83 %
Penfield	195	253	77.08 %	346	511	67.71 %	526	753	69.85 %	1,331	1,535	86.71 %
Perinton	52	89	58.43 %	429	668	64.22 %	707	983	71.92 %	1,895	2,177	87.05 %
Pittsford	97	116	83.62 %	262	415	63.13 %	271	473	57.29 %	965	1,134	85.10 %
Riga	8	17	47.06 %	82	113	72.57 %	114	158	72.15 %	222	263	84.41 %
Rush	47	61	77.05 %	25	50	50.00 %	54	79	68.35 %	109	139	78.42 %
Sweden	26	38	68.42 %	144	199	72.36 %	173	256	67.58 %	284	346	82.08 %
Webster	175	223	78.48 %	341	512	66.60 %	641	891	71.94 %	1,530	1,791	85.43 %
Wheatland	10	18	55.56 %	55	87	63.22 %	100	137	72.99 %	148	176	84.09 %
TOTAL:	2,285	3,080	74.19 %	4,666	6,876	67.86 %	8,121	11,552	70.30 %	16,153	19,365	83.41 %
GRAND TOTAL:	2,733	3,719	73.49 %	5,137	7,634	67.29 %	9,646	13,821	69.79 %	17,675	21,577	81.92 %

2008 GENERAL ELECTION
REPUBLICAN TURNOUT BY AGE

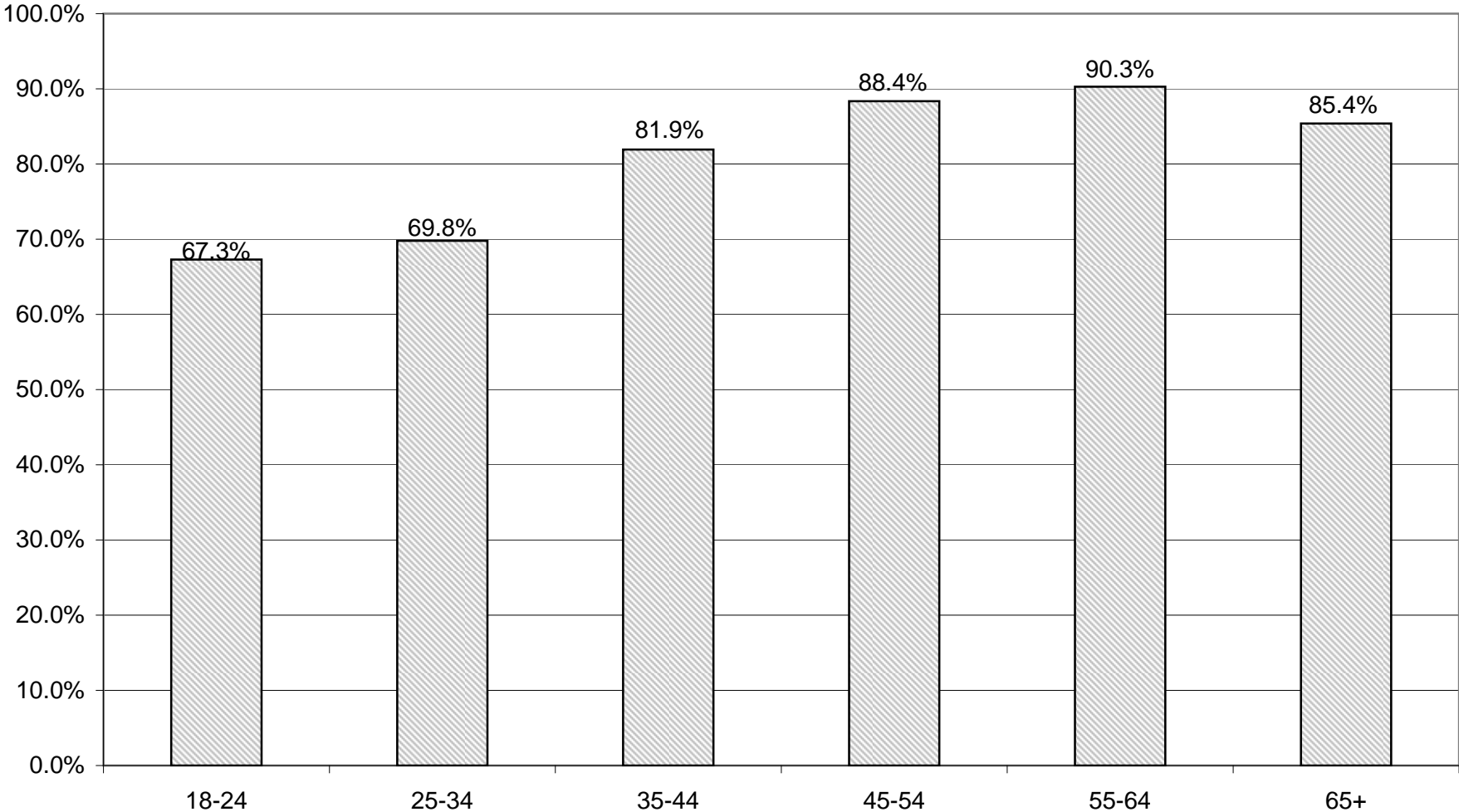
LT/LD SUMMARY
Part 2 of 2

LEGISLATIVE DISTRICT OR TOWN CITY	45-54			55-64			65+		
	VOTED	REGISTERED	TURNOUT	VOTED	REGISTERED	TURNOUT	VOTED	REGISTERED	TURNOUT
Leg. Dist. 06	152	182	83.52 %	135	155	87.10 %	195	228	85.53 %
Leg. Dist. 07	67	81	82.72 %	86	96	89.58 %	136	158	86.08 %
Leg. Dist. 21	257	324	79.32 %	242	284	85.21 %	333	411	81.02 %
Leg. Dist. 22	62	134	46.27 %	67	102	65.69 %	74	116	63.79 %
Leg. Dist. 23	329	400	82.25 %	296	338	87.57 %	334	414	80.68 %
Leg. Dist. 24	156	202	77.23 %	175	206	84.95 %	286	372	76.88 %
Leg. Dist. 25	85	142	59.86 %	108	149	72.48 %	130	199	65.33 %
Leg. Dist. 26	244	317	76.97 %	192	222	86.49 %	222	287	77.35 %
Leg. Dist. 27	188	253	74.31 %	156	194	80.41 %	200	260	76.92 %
Leg. Dist. 28	222	300	74.00 %	199	259	76.83 %	203	298	68.12 %
Leg. Dist. 29	206	306	67.32 %	221	292	75.68 %	284	380	74.74 %
TOTAL:	1,968	2,641	74.52 %	1,877	2,297	81.72 %	2,397	3,123	76.75 %
TOWNS									
Brighton	941	1,063	88.52 %	922	1,006	91.65 %	1,791	2,130	84.08 %
Chili	1,418	1,583	89.58 %	1,087	1,211	89.76 %	1,604	1,847	86.84 %
Clarkson	346	395	87.59 %	250	279	89.61 %	360	418	86.12 %
East Rochester	230	274	83.94 %	177	198	89.39 %	244	297	82.15 %
Gates	998	1,183	84.36 %	879	1,016	86.52 %	1,732	2,083	83.15 %
Greece	4,189	4,780	87.64 %	3,623	3,993	90.73 %	5,938	7,051	84.22 %
Hamlin	542	616	87.99 %	444	472	94.07 %	454	519	87.48 %
Henrietta	1,411	1,589	88.80 %	1,159	1,293	89.64 %	1,774	2,043	86.83 %
Irondequoit	1,820	2,052	88.69 %	1,676	1,859	90.16 %	2,972	3,617	82.17 %
Mendon	713	775	92.00 %	484	516	93.80 %	582	645	90.23 %
Ogden	1,186	1,316	90.12 %	873	958	91.13 %	1,002	1,144	87.59 %
Parma	887	996	89.06 %	669	746	89.68 %	975	1,132	86.13 %
Penfield	2,135	2,332	91.55 %	1,468	1,597	91.92 %	2,230	2,588	86.17 %
Perinton	2,852	3,098	92.06 %	2,283	2,460	92.80 %	3,426	3,844	89.13 %
Pittsford	1,726	1,870	92.30 %	1,314	1,413	92.99 %	2,375	2,653	89.52 %
Riga	408	463	88.12 %	327	349	93.70 %	361	417	86.57 %
Rush	257	276	93.12 %	187	197	94.92 %	257	281	91.46 %
Sweden	500	540	92.59 %	446	486	91.77 %	534	620	86.13 %
Webster	2,237	2,461	90.90 %	1,597	1,739	91.83 %	2,552	2,865	89.08 %
Wheatland	256	275	93.09 %	221	241	91.70 %	311	351	88.60 %
TOTAL:	25,052	27,937	89.67 %	20,086	22,029	91.18 %	31,474	36,545	86.12 %
GRAND TOTAL:	27,020	30,578	88.36 %	21,963	24,326	90.29 %	33,871	39,668	85.39 %

REPUBLICAN TURNOUT - TOTAL AND GENDER 2008 GENERAL ELECTION



REPUBLICAN TURNOUT BY AGE GROUP 2008 GENERAL ELECTION



INDEPENDENCE SUMMARY

2008 GENERAL ELECTION
INDEPENDENCE TURNOUT BY GENDER

LT/LD SUMMARY

LEGISLATIVE DISTRICT OR TOWN	TOTAL VOTERS			MALES			FEMALES		
	VOTED	REGISTERED	TURNOUT	VOTED	REGISTERED	TURNOUT	VOTED	REGISTERED	TURNOUT
CITY									
Leg. Dist. 06	91	116	78.45 %	43	49	87.76 %	48	67	71.64 %
Leg. Dist. 07	58	68	85.29 %	23	32	71.88 %	35	36	97.22 %
Leg. Dist. 21	382	515	74.17 %	175	240	72.92 %	207	275	75.27 %
Leg. Dist. 22	86	161	53.42 %	40	72	55.56 %	46	89	51.69 %
Leg. Dist. 23	490	622	78.78 %	227	293	77.47 %	263	329	79.94 %
Leg. Dist. 24	253	317	79.81 %	126	157	80.25 %	127	160	79.38 %
Leg. Dist. 25	195	267	73.03 %	105	156	67.31 %	90	111	81.08 %
Leg. Dist. 26	179	246	72.76 %	94	119	78.99 %	85	127	66.93 %
Leg. Dist. 27	245	327	74.92 %	123	172	71.51 %	122	155	78.71 %
Leg. Dist. 28	199	321	61.99 %	100	158	63.29 %	99	163	60.74 %
Leg. Dist. 29	174	289	60.21 %	89	144	61.81 %	85	145	58.62 %
TOTAL:	2,352	3,249	72.39 %	1,145	1,592	71.92 %	1,207	1,657	72.84 %
TOWNS									
Brighton	652	757	86.13 %	290	346	83.82 %	362	411	88.08 %
Chili	517	648	79.78 %	224	300	74.67 %	293	348	84.20 %
Clarkson	132	173	76.30 %	64	81	79.01 %	68	92	73.91 %
East Rochester	143	182	78.57 %	71	97	73.20 %	72	85	84.71 %
Gates	481	616	78.08 %	233	313	74.44 %	248	303	81.85 %
Greece	1,845	2,383	77.42 %	830	1,108	74.91 %	1,015	1,275	79.61 %
Hamlin	194	244	79.51 %	93	119	78.15 %	101	125	80.80 %
Henrietta	703	888	79.17 %	322	420	76.67 %	381	468	81.41 %
Irondequoit	1,067	1,341	79.57 %	484	621	77.94 %	583	720	80.97 %
Mendon	197	243	81.07 %	82	107	76.64 %	115	136	84.56 %
Ogden	398	497	80.08 %	197	251	78.49 %	201	246	81.71 %
Parma	311	409	76.04 %	145	205	70.73 %	166	204	81.37 %
Penfield	822	1,013	81.15 %	385	478	80.54 %	437	535	81.68 %
Perinton	1,020	1,215	83.95 %	440	547	80.44 %	580	668	86.83 %
Pittsford	549	662	82.93 %	216	268	80.60 %	333	394	84.52 %
Riga	137	174	78.74 %	58	74	78.38 %	79	100	79.00 %
Rush	66	84	78.57 %	26	38	68.42 %	40	46	86.96 %
Sweden	236	308	76.62 %	109	151	72.19 %	127	157	80.89 %
Webster	961	1,175	81.79 %	459	571	80.39 %	502	604	83.11 %
Wheatland	107	135	79.26 %	52	64	81.25 %	55	71	77.46 %
TOTAL:	10,538	13,147	80.16 %	4,780	6,159	77.61 %	5,758	6,988	82.40 %
GRAND TOTAL:	12,890	16,396	78.62 %	5,925	7,751	76.44 %	6,965	8,645	80.57 %

2008 GENERAL ELECTION
INDEPENDENCE TURNOUT BY AGE

LT/LD SUMMARY
Part 1 of 2

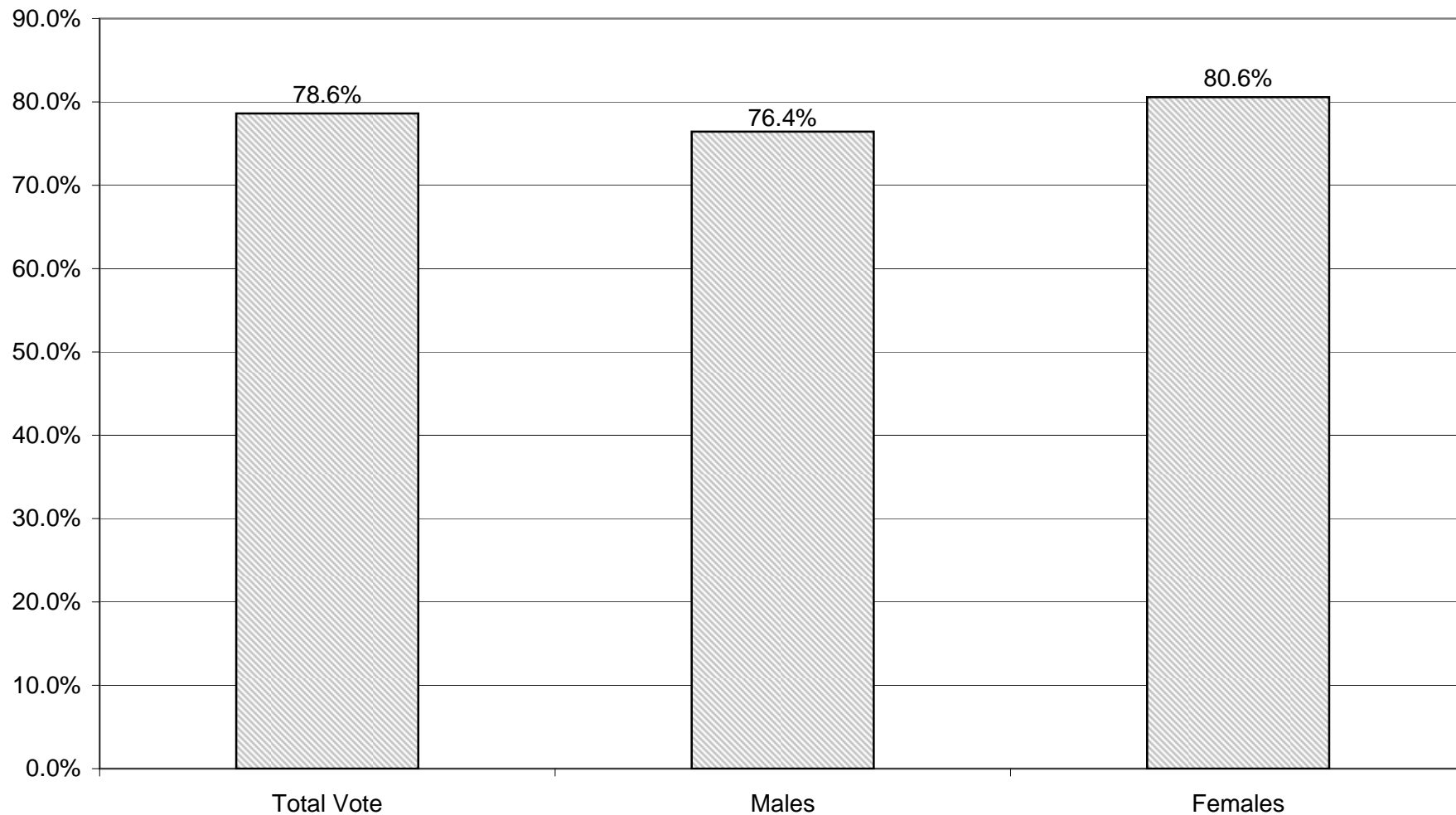
LEGISLATIVE DISTRICT OR TOWN CITY	NDOB			18-24			25-34			35-44		
	VOTED	REGISTERED	TURNOUT	VOTED	REGISTERED	TURNOUT	VOTED	REGISTERED	TURNOUT	VOTED	REGISTERED	TURNOUT
Leg. Dist. 06	0	0	0.00 %	5	9	55.56 %	23	35	65.71 %	20	22	90.91 %
Leg. Dist. 07	0	0	0.00 %	3	4	75.00 %	17	17	100.00 %	8	11	72.73 %
Leg. Dist. 21	0	0	0.00 %	45	66	68.18 %	122	158	77.22 %	82	122	67.21 %
Leg. Dist. 22	0	0	0.00 %	27	38	71.05 %	21	48	43.75 %	11	33	33.33 %
Leg. Dist. 23	0	0	0.00 %	56	82	68.29 %	209	258	81.01 %	96	122	78.69 %
Leg. Dist. 24	2	2	100.00 %	24	35	68.57 %	90	110	81.82 %	55	67	82.09 %
Leg. Dist. 25	0	0	0.00 %	32	46	69.57 %	57	75	76.00 %	30	56	53.57 %
Leg. Dist. 26	0	0	0.00 %	18	36	50.00 %	65	83	78.31 %	29	41	70.73 %
Leg. Dist. 27	0	0	0.00 %	36	44	81.82 %	43	76	56.58 %	63	79	79.75 %
Leg. Dist. 28	1	1	100.00 %	22	47	46.81 %	55	94	58.51 %	41	61	67.21 %
Leg. Dist. 29	0	0	0.00 %	24	42	57.14 %	51	88	57.95 %	36	48	75.00 %
TOTAL:	3	3	100.00 %	292	449	65.03 %	753	1,042	72.26 %	471	662	71.15 %
TOWNS												
Brighton	0	0	0.00 %	80	108	74.07 %	150	185	81.08 %	135	145	93.10 %
Chili	0	0	0.00 %	56	86	65.12 %	136	180	75.56 %	121	150	80.67 %
Clarkson	0	0	0.00 %	12	20	60.00 %	17	31	54.84 %	34	37	91.89 %
East Rochester	0	0	0.00 %	17	25	68.00 %	27	37	72.97 %	33	40	82.50 %
Gates	0	0	0.00 %	55	77	71.43 %	101	132	76.52 %	114	144	79.17 %
Greece	0	0	0.00 %	231	340	67.94 %	361	532	67.86 %	395	515	76.70 %
Hamlin	0	0	0.00 %	41	51	80.39 %	36	47	76.60 %	35	47	74.47 %
Henrietta	0	0	0.00 %	121	162	74.69 %	159	213	74.65 %	147	189	77.78 %
Irondequoit	0	0	0.00 %	127	183	69.40 %	261	350	74.57 %	220	271	81.18 %
Mendon	0	0	0.00 %	31	49	63.27 %	20	38	52.63 %	45	46	97.83 %
Ogden	0	0	0.00 %	71	99	71.72 %	72	98	73.47 %	80	101	79.21 %
Parma	0	0	0.00 %	29	55	52.73 %	63	89	70.79 %	63	81	77.78 %
Penfield	0	0	0.00 %	108	144	75.00 %	140	205	68.29 %	164	191	85.86 %
Perinton	0	0	0.00 %	109	156	69.87 %	178	259	68.73 %	237	265	89.43 %
Pittsford	0	0	0.00 %	79	107	73.83 %	59	105	56.19 %	131	156	83.97 %
Riga	0	0	0.00 %	23	32	71.88 %	25	37	67.57 %	23	32	71.88 %
Rush	0	0	0.00 %	10	13	76.92 %	8	15	53.33 %	11	12	91.67 %
Sweden	0	0	0.00 %	49	68	72.06 %	45	70	64.29 %	52	54	96.30 %
Webster	0	0	0.00 %	117	174	67.24 %	149	224	66.52 %	220	272	80.88 %
Wheatland	0	0	0.00 %	14	23	60.87 %	29	40	72.50 %	20	24	83.33 %
TOTAL:	0	0	0.00 %	1,380	1,972	69.98 %	2,036	2,887	70.52 %	2,280	2,772	82.25 %
GRAND TOTAL:	3	3	100.00 %	1,672	2,421	69.06 %	2,789	3,929	70.98 %	2,751	3,434	80.11 %

2008 GENERAL ELECTION
INDEPENDENCE TURNOUT BY AGE

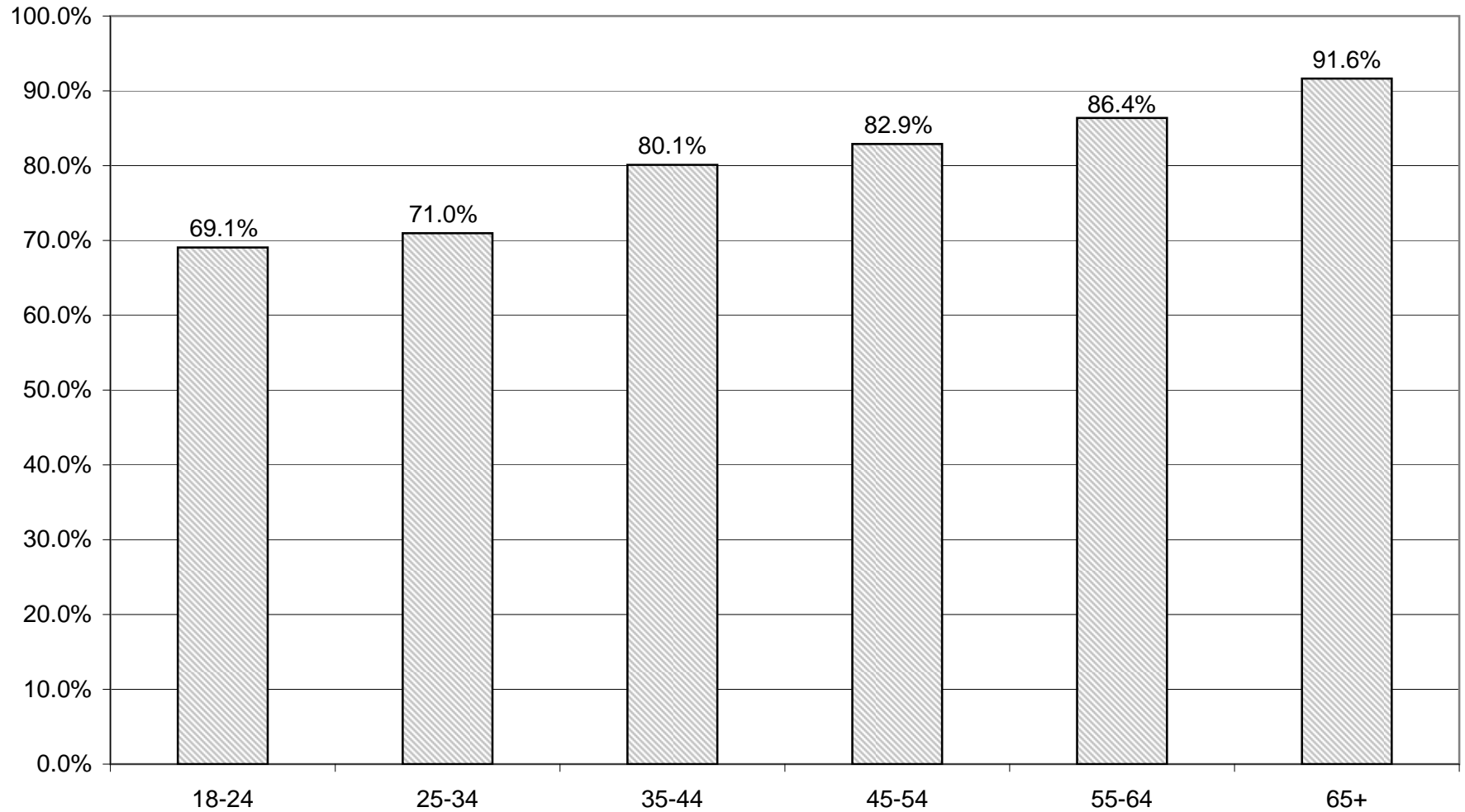
LT/LD SUMMARY
Part 2 of 2

LEGISLATIVE DISTRICT OR TOWN	45-54			55-64			65+		
	VOTED	REGISTERED	TURNOUT	VOTED	REGISTERED	TURNOUT	VOTED	REGISTERED	TURNOUT
CITY									
Leg. Dist. 06	24	28	85.71 %	9	10	90.00 %	10	12	83.33 %
Leg. Dist. 07	9	13	69.23 %	13	16	81.25 %	7	7	100.00 %
Leg. Dist. 21	67	89	75.28 %	40	51	78.43 %	26	29	89.66 %
Leg. Dist. 22	12	22	54.55 %	11	14	78.57 %	4	6	66.67 %
Leg. Dist. 23	66	87	75.86 %	41	48	85.42 %	22	25	88.00 %
Leg. Dist. 24	52	64	81.25 %	19	24	79.17 %	11	15	73.33 %
Leg. Dist. 25	36	47	76.60 %	24	25	96.00 %	16	18	88.89 %
Leg. Dist. 26	45	51	88.24 %	16	26	61.54 %	6	9	66.67 %
Leg. Dist. 27	50	69	72.46 %	37	46	80.43 %	13	13	100.00 %
Leg. Dist. 28	42	67	62.69 %	26	33	78.79 %	12	18	66.67 %
Leg. Dist. 29	29	42	69.05 %	24	44	54.55 %	10	25	40.00 %
TOTAL:	432	579	74.61 %	260	337	77.15 %	141	177	79.66 %
TOWNS									
Brighton	120	138	86.96 %	70	81	86.42 %	97	100	97.00 %
Chili	89	107	83.18 %	59	69	85.51 %	56	56	100.00 %
Clarkson	45	54	83.33 %	12	17	70.59 %	12	14	85.71 %
East Rochester	36	40	90.00 %	19	27	70.37 %	11	13	84.62 %
Gates	90	120	75.00 %	61	71	85.92 %	60	72	83.33 %
Greece	405	485	83.51 %	229	265	86.42 %	224	246	91.06 %
Hamlin	41	53	77.36 %	29	33	87.88 %	12	13	92.31 %
Henrietta	126	158	79.75 %	76	87	87.36 %	74	79	93.67 %
Irondequoit	228	274	83.21 %	120	141	85.11 %	111	122	90.98 %
Mendon	54	56	96.43 %	29	33	87.88 %	18	21	85.71 %
Ogden	88	108	81.48 %	50	54	92.59 %	37	37	100.00 %
Parma	72	92	78.26 %	48	53	90.57 %	36	39	92.31 %
Penfield	204	234	87.18 %	100	111	90.09 %	106	128	82.81 %
Perinton	216	244	88.52 %	131	144	90.97 %	147	147	100.00 %
Pittsford	129	136	94.85 %	78	82	95.12 %	73	76	96.05 %
Riga	38	41	92.68 %	16	19	84.21 %	12	13	92.31 %
Rush	17	22	77.27 %	12	13	92.31 %	8	9	88.89 %
Sweden	42	60	70.00 %	26	30	86.67 %	22	26	84.62 %
Webster	214	243	88.07 %	125	126	99.21 %	136	136	100.00 %
Wheatland	26	28	92.86 %	10	13	76.92 %	7	7	100.00 %
TOTAL:	2,280	2,693	84.66 %	1,300	1,469	88.50 %	1,262	1,354	93.21 %
GRAND TOTAL:	2,712	3,272	82.89 %	1,560	1,806	86.38 %	1,403	1,531	91.64 %

INDEPENDENCE TURNOUT - TOTAL AND GENDER 2008 GENERAL ELECTION



INDEPENDENCE TURNOUT BY AGE GROUP 2008 GENERAL ELECTION



CONSERVATIVE SUMMARY

2008 GENERAL ELECTION
CONSERVATIVE TURNOUT BY GENDER

LT/LD SUMMARY

LEGISLATIVE DISTRICT OR TOWN CITY	TOTAL VOTERS			MALES			FEMALES		
	VOTED	REGISTERED	TURNOUT	VOTED	REGISTERED	TURNOUT	VOTED	REGISTERED	TURNOUT
Leg. Dist. 06	74	91	81.32 %	37	49	75.51 %	37	42	88.10 %
Leg. Dist. 07	21	26	80.77 %	14	17	82.35 %	7	9	77.78 %
Leg. Dist. 21	76	100	76.00 %	47	63	74.60 %	29	37	78.38 %
Leg. Dist. 22	31	53	58.49 %	19	30	63.33 %	12	23	52.17 %
Leg. Dist. 23	81	105	77.14 %	46	59	77.97 %	35	46	76.09 %
Leg. Dist. 24	50	62	80.65 %	30	36	83.33 %	20	26	76.92 %
Leg. Dist. 25	37	56	66.07 %	25	38	65.79 %	12	18	66.67 %
Leg. Dist. 26	78	104	75.00 %	43	60	71.67 %	35	44	79.55 %
Leg. Dist. 27	51	78	65.38 %	28	46	60.87 %	23	32	71.88 %
Leg. Dist. 28	91	132	68.94 %	47	69	68.12 %	44	63	69.84 %
Leg. Dist. 29	67	101	66.34 %	37	62	59.68 %	30	39	76.92 %
TOTAL:	657	908	72.36 %	373	529	70.51 %	284	379	74.93 %
TOWNS									
Brighton	175	210	83.33 %	106	127	83.46 %	69	83	83.13 %
Chili	362	441	82.09 %	205	251	81.67 %	157	190	82.63 %
Clarkson	103	123	83.74 %	61	74	82.43 %	42	49	85.71 %
East Rochester	75	94	79.79 %	42	55	76.36 %	33	39	84.62 %
Gates	315	399	78.95 %	174	215	80.93 %	141	184	76.63 %
Greece	1,249	1,549	80.63 %	655	814	80.47 %	594	735	80.82 %
Hamlin	107	129	82.95 %	60	73	82.19 %	47	56	83.93 %
Henrietta	359	455	78.90 %	204	256	79.69 %	155	199	77.89 %
Irondequoit	547	678	80.68 %	306	379	80.74 %	241	299	80.60 %
Mendon	89	99	89.90 %	57	62	91.94 %	32	37	86.49 %
Ogden	286	357	80.11 %	145	182	79.67 %	141	175	80.57 %
Parma	222	266	83.46 %	126	147	85.71 %	96	119	80.67 %
Penfield	335	401	83.54 %	190	232	81.90 %	145	169	85.80 %
Perinton	381	466	81.76 %	223	279	79.93 %	158	187	84.49 %
Pittsford	176	197	89.34 %	109	126	86.51 %	67	71	94.37 %
Riga	74	87	85.06 %	45	55	81.82 %	29	32	90.63 %
Rush	39	46	84.78 %	21	24	87.50 %	18	22	81.82 %
Sweden	104	130	80.00 %	60	73	82.19 %	44	57	77.19 %
Webster	465	538	86.43 %	271	309	87.70 %	194	229	84.72 %
Wheatland	67	78	85.90 %	44	51	86.27 %	23	27	85.19 %
TOTAL:	5,530	6,743	82.01 %	3,104	3,784	82.03 %	2,426	2,959	81.99 %
GRAND TOTAL:	6,187	7,651	80.87 %	3,477	4,313	80.62 %	2,710	3,338	81.19 %

2008 GENERAL ELECTION
CONSERVATIVE TURNOUT BY AGE

LT/LD SUMMARY

Part 1 of 2

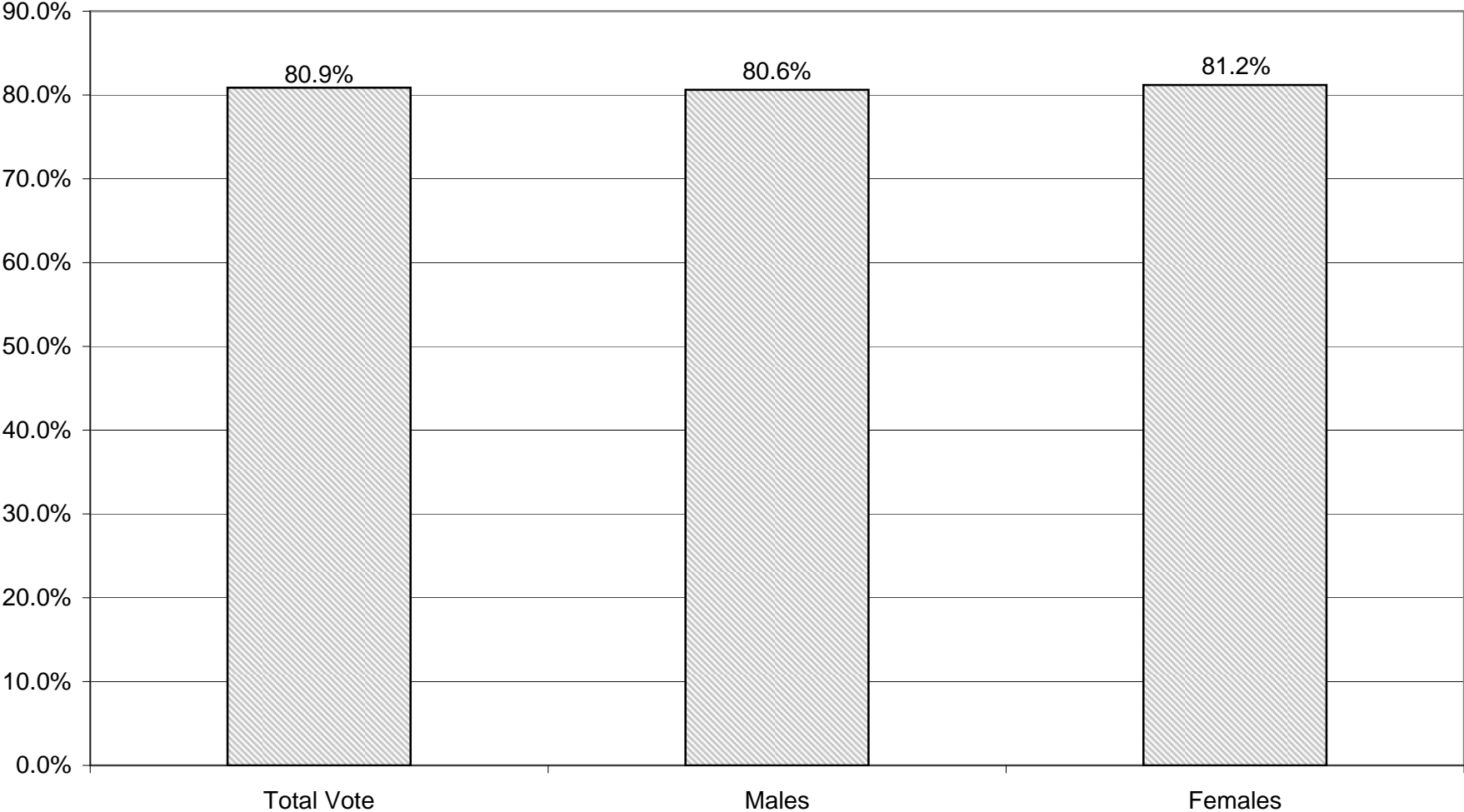
LEGISLATIVE DISTRICT OR TOWN CITY	NDOB			18-24			25-34			35-44		
	VOTED	REGISTERED	TURNOUT	VOTED	REGISTERED	TURNOUT	VOTED	REGISTERED	TURNOUT	VOTED	REGISTERED	TURNOUT
Leg. Dist. 06	0	0	0.00 %	5	6	83.33 %	5	8	62.50 %	14	19	73.68 %
Leg. Dist. 07	0	0	0.00 %	0	0	0.00 %	1	1	100.00 %	3	4	75.00 %
Leg. Dist. 21	3	3	100.00 %	3	3	100.00 %	12	17	70.59 %	7	12	58.33 %
Leg. Dist. 22	0	0	0.00 %	1	2	50.00 %	0	4	0.00 %	5	13	38.46 %
Leg. Dist. 23	1	1	100.00 %	4	7	57.14 %	16	25	64.00 %	9	13	69.23 %
Leg. Dist. 24	2	2	100.00 %	4	4	100.00 %	7	10	70.00 %	4	7	57.14 %
Leg. Dist. 25	1	1	100.00 %	2	5	40.00 %	6	12	50.00 %	2	2	100.00 %
Leg. Dist. 26	1	1	100.00 %	7	9	77.78 %	6	14	42.86 %	14	16	87.50 %
Leg. Dist. 27	0	0	0.00 %	2	4	50.00 %	8	14	57.14 %	5	11	45.45 %
Leg. Dist. 28	0	0	0.00 %	3	6	50.00 %	3	10	30.00 %	14	23	60.87 %
Leg. Dist. 29	0	0	0.00 %	2	3	66.67 %	10	16	62.50 %	8	15	53.33 %
TOTAL:	8	8	100.00 %	33	49	67.35 %	74	131	56.49 %	85	135	62.96 %
TOWNS												
Brighton	3	4	75.00 %	8	12	66.67 %	11	15	73.33 %	26	35	74.29 %
Chili	2	2	100.00 %	18	25	72.00 %	30	48	62.50 %	60	67	89.55 %
Clarkson	0	0	0.00 %	7	7	100.00 %	9	12	75.00 %	29	36	80.56 %
East Rochester	1	1	100.00 %	2	2	100.00 %	12	17	70.59 %	11	14	78.57 %
Gates	0	0	0.00 %	14	18	77.78 %	21	36	58.33 %	50	66	75.76 %
Greece	11	13	84.62 %	51	71	71.83 %	88	149	59.06 %	165	212	77.83 %
Hamlin	0	0	0.00 %	2	4	50.00 %	8	10	80.00 %	22	28	78.57 %
Henrietta	1	1	100.00 %	13	19	68.42 %	19	30	63.33 %	64	87	73.56 %
Irondequoit	8	8	100.00 %	22	31	70.97 %	45	69	65.22 %	75	99	75.76 %
Mendon	0	0	0.00 %	6	7	85.71 %	3	4	75.00 %	18	21	85.71 %
Ogden	2	2	100.00 %	19	30	63.33 %	20	33	60.61 %	40	55	72.73 %
Parma	0	0	0.00 %	4	9	44.44 %	21	27	77.78 %	41	52	78.85 %
Penfield	1	2	50.00 %	8	14	57.14 %	20	29	68.97 %	49	56	87.50 %
Perinton	0	0	0.00 %	11	20	55.00 %	24	37	64.86 %	38	53	71.70 %
Pittsford	2	2	100.00 %	6	6	100.00 %	5	9	55.56 %	24	28	85.71 %
Riga	0	0	0.00 %	4	4	100.00 %	5	9	55.56 %	17	18	94.44 %
Rush	0	0	0.00 %	2	2	100.00 %	2	3	66.67 %	7	7	100.00 %
Sweden	0	0	0.00 %	9	9	100.00 %	9	16	56.25 %	12	17	70.59 %
Webster	4	4	100.00 %	21	27	77.78 %	29	43	67.44 %	67	84	79.76 %
Wheatland	0	0	0.00 %	2	2	100.00 %	2	5	40.00 %	12	14	85.71 %
TOTAL:	35	39	89.74 %	229	319	71.79 %	383	601	63.73 %	827	1,049	78.84 %
GRAND TOTAL:	43	47	91.49 %	262	368	71.20 %	457	732	62.43 %	912	1,184	77.03 %

2008 GENERAL ELECTION
CONSERVATIVE TURNOUT BY AGE

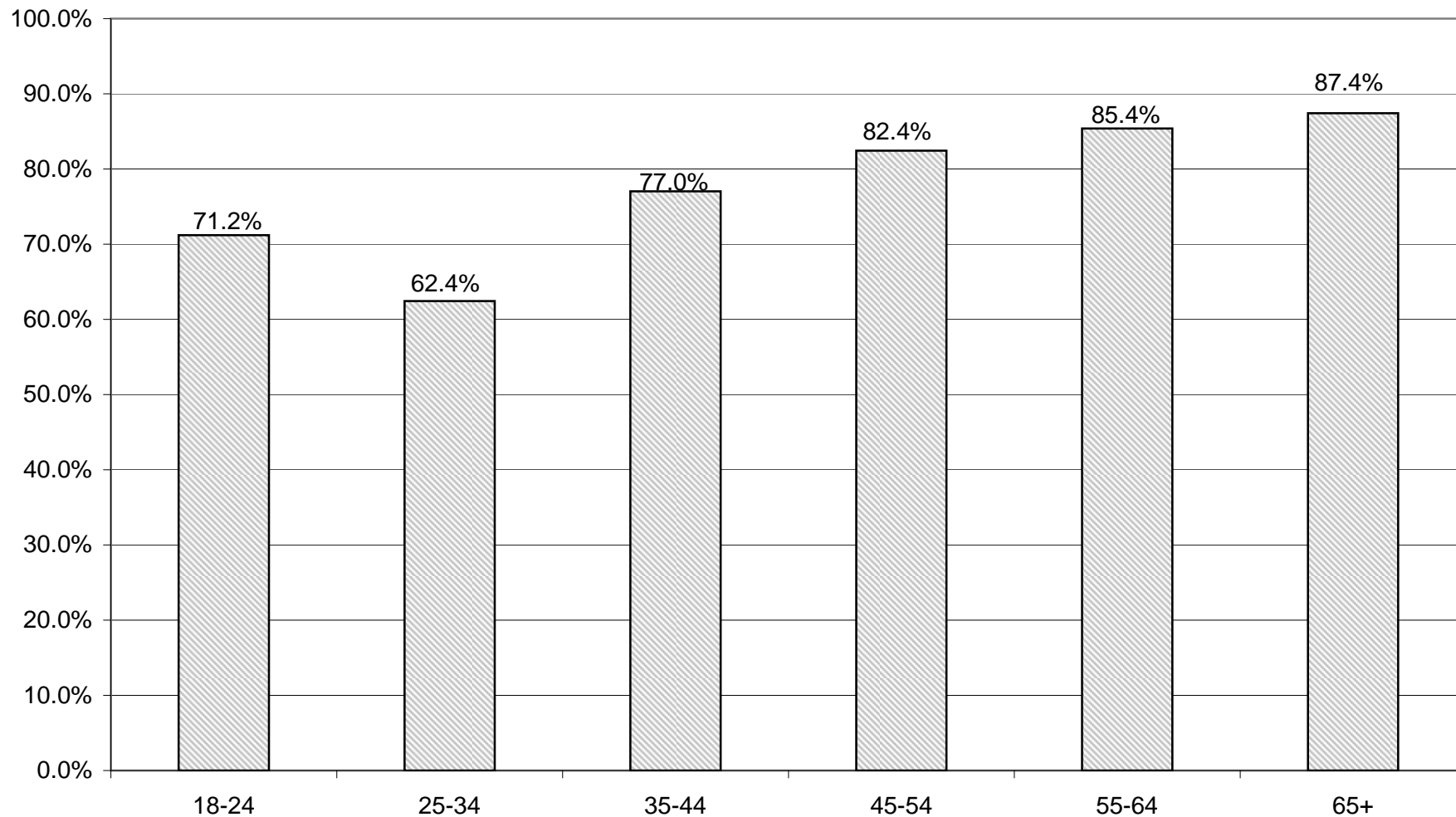
LT/LD SUMMARY
Part 2 of 2

LEGISLATIVE DISTRICT OR TOWN CITY	45-54			55-64			65+		
	VOTED	REGISTERED	TURNOUT	VOTED	REGISTERED	TURNOUT	VOTED	REGISTERED	TURNOUT
Leg. Dist. 06	14	19	73.68 %	23	25	92.00 %	13	14	92.86 %
Leg. Dist. 07	2	4	50.00 %	13	15	86.67 %	2	2	100.00 %
Leg. Dist. 21	22	30	73.33 %	19	25	76.00 %	10	10	100.00 %
Leg. Dist. 22	10	16	62.50 %	8	10	80.00 %	7	8	87.50 %
Leg. Dist. 23	17	22	77.27 %	15	18	83.33 %	19	19	100.00 %
Leg. Dist. 24	13	16	81.25 %	13	14	92.86 %	7	9	77.78 %
Leg. Dist. 25	13	17	76.47 %	5	10	50.00 %	8	9	88.89 %
Leg. Dist. 26	20	26	76.92 %	19	22	86.36 %	11	16	68.75 %
Leg. Dist. 27	10	19	52.63 %	17	19	89.47 %	9	11	81.82 %
Leg. Dist. 28	26	31	83.87 %	22	38	57.89 %	23	24	95.83 %
Leg. Dist. 29	17	25	68.00 %	19	28	67.86 %	11	14	78.57 %
TOTAL:	164	225	72.89 %	173	224	77.23 %	120	136	88.24 %
TOWNS									
Brighton	41	44	93.18 %	36	45	80.00 %	50	55	90.91 %
Chili	89	110	80.91 %	79	90	87.78 %	84	99	84.85 %
Clarkson	31	38	81.58 %	17	20	85.00 %	10	10	100.00 %
East Rochester	26	31	83.87 %	20	25	80.00 %	3	4	75.00 %
Gates	89	111	80.18 %	71	87	81.61 %	70	81	86.42 %
Greece	357	440	81.14 %	328	373	87.94 %	249	291	85.57 %
Hamlin	42	46	91.30 %	23	28	82.14 %	10	13	76.92 %
Henrietta	88	110	80.00 %	83	103	80.58 %	91	105	86.67 %
Irondequoit	129	153	84.31 %	154	175	88.00 %	114	143	79.72 %
Mendon	25	28	89.29 %	19	20	95.00 %	18	19	94.74 %
Ogden	96	113	84.96 %	60	72	83.33 %	49	52	94.23 %
Parma	62	74	83.78 %	54	60	90.00 %	40	44	90.91 %
Penfield	82	99	82.83 %	104	121	85.95 %	71	80	88.75 %
Perinton	90	104	86.54 %	91	105	86.67 %	127	147	86.39 %
Pittsford	42	43	97.67 %	43	51	84.31 %	54	58	93.10 %
Riga	21	25	84.00 %	15	16	93.75 %	12	15	80.00 %
Rush	8	11	72.73 %	11	13	84.62 %	9	10	90.00 %
Sweden	37	45	82.22 %	26	29	89.66 %	11	14	78.57 %
Webster	126	144	87.50 %	121	136	88.97 %	97	100	97.00 %
Wheatland	20	26	76.92 %	20	20	100.00 %	11	11	100.00 %
TOTAL:	1,501	1,795	83.62 %	1,375	1,589	86.53 %	1,180	1,351	87.34 %
GRAND TOTAL:	1,665	2,020	82.43 %	1,548	1,813	85.38 %	1,300	1,487	87.42 %

CONSERVATIVE TURNOUT - TOTAL AND GENDER 2008 GENERAL ELECTION



CONSERVATIVE TURNOUT BY AGE GROUP 2008 GENERAL ELECTION



WORKING FAMILIES SUMMARY

2008 GENERAL ELECTION
WORKING FAMILIES TURNOUT BY GENDER

LT/LD SUMMARY

LEGISLATIVE DISTRICT OR TOWN CITY	TOTAL VOTERS			MALES			FEMALES		
	VOTED	REGISTERED	TURNOUT	VOTED	REGISTERED	TURNOUT	VOTED	REGISTERED	TURNOUT
Leg. Dist. 06	8	15	53.33 %	2	6	33.33 %	6	9	66.67 %
Leg. Dist. 07	3	4	75.00 %	0	1	0.00 %	3	3	100.00 %
Leg. Dist. 21	34	57	59.65 %	11	23	47.83 %	23	34	67.65 %
Leg. Dist. 22	32	71	45.07 %	13	26	50.00 %	19	45	42.22 %
Leg. Dist. 23	29	42	69.05 %	13	21	61.90 %	16	21	76.19 %
Leg. Dist. 24	16	27	59.26 %	10	11	90.91 %	6	16	37.50 %
Leg. Dist. 25	25	41	60.98 %	8	14	57.14 %	17	27	62.96 %
Leg. Dist. 26	26	45	57.78 %	8	15	53.33 %	18	30	60.00 %
Leg. Dist. 27	42	80	52.50 %	11	25	44.00 %	31	55	56.36 %
Leg. Dist. 28	44	97	45.36 %	12	37	32.43 %	32	60	53.33 %
Leg. Dist. 29	24	74	32.43 %	10	25	40.00 %	14	49	28.57 %
TOTAL:	283	553	51.18 %	98	204	48.04 %	185	349	53.01 %
TOWNS									
Brighton	15	22	68.18 %	4	10	40.00 %	11	12	91.67 %
Chili	23	40	57.50 %	11	16	68.75 %	12	24	50.00 %
Clarkson	6	11	54.55 %	3	7	42.86 %	3	4	75.00 %
East Rochester	9	18	50.00 %	4	10	40.00 %	5	8	62.50 %
Gates	37	57	64.91 %	15	23	65.22 %	22	34	64.71 %
Greece	89	158	56.33 %	37	59	62.71 %	52	99	52.53 %
Hamlin	8	8	100.00 %	1	1	100.00 %	7	7	100.00 %
Henrietta	26	35	74.29 %	14	16	87.50 %	12	19	63.16 %
Irondequoit	45	64	70.31 %	17	27	62.96 %	28	37	75.68 %
Mendon	4	5	80.00 %	3	4	75.00 %	1	1	100.00 %
Ogden	19	28	67.86 %	10	14	71.43 %	9	14	64.29 %
Parma	34	41	82.93 %	23	26	88.46 %	11	15	73.33 %
Penfield	21	34	61.76 %	9	13	69.23 %	12	21	57.14 %
Perinton	23	38	60.53 %	12	19	63.16 %	11	19	57.89 %
Pittsford	10	16	62.50 %	5	6	83.33 %	5	10	50.00 %
Riga	6	8	75.00 %	2	4	50.00 %	4	4	100.00 %
Rush	4	6	66.67 %	4	6	66.67 %	0	0	0.00 %
Sweden	13	23	56.52 %	3	9	33.33 %	10	14	71.43 %
Webster	32	41	78.05 %	21	24	87.50 %	11	17	64.71 %
Wheatland	5	6	83.33 %	3	4	75.00 %	2	2	100.00 %
TOTAL:	429	659	65.10 %	201	298	67.45 %	228	361	63.16 %
GRAND TOTAL:	712	1,212	58.75 %	299	502	59.56 %	413	710	58.17 %

2008 GENERAL ELECTION
WORKING FAMILIES TURNOUT BY AGE

LT/LD SUMMARY
Part 1 of 2

LEGISLATIVE DISTRICT OR TOWN CITY	NDOB			18-24			25-34			35-44		
	VOTED	REGISTERED	TURNOUT	VOTED	REGISTERED	TURNOUT	VOTED	REGISTERED	TURNOUT	VOTED	REGISTERED	TURNOUT
Leg. Dist. 06	0	0	0.00 %	0	0	0.00 %	2	4	50.00 %	3	5	60.00 %
Leg. Dist. 07	0	0	0.00 %	0	0	0.00 %	1	1	100.00 %	1	2	50.00 %
Leg. Dist. 21	0	0	0.00 %	6	10	60.00 %	16	19	84.21 %	6	14	42.86 %
Leg. Dist. 22	0	0	0.00 %	4	11	36.36 %	14	28	50.00 %	8	16	50.00 %
Leg. Dist. 23	0	0	0.00 %	1	2	50.00 %	8	13	61.54 %	9	12	75.00 %
Leg. Dist. 24	0	0	0.00 %	1	4	25.00 %	6	10	60.00 %	3	6	50.00 %
Leg. Dist. 25	0	0	0.00 %	3	4	75.00 %	9	17	52.94 %	8	9	88.89 %
Leg. Dist. 26	0	0	0.00 %	4	4	100.00 %	9	16	56.25 %	9	16	56.25 %
Leg. Dist. 27	0	0	0.00 %	6	14	42.86 %	9	20	45.00 %	10	26	38.46 %
Leg. Dist. 28	0	0	0.00 %	2	9	22.22 %	5	26	19.23 %	24	40	60.00 %
Leg. Dist. 29	0	0	0.00 %	4	11	36.36 %	9	30	30.00 %	6	21	28.57 %
TOTAL:	0	0	0.00 %	31	69	44.93 %	88	184	47.83 %	87	167	52.10 %
TOWNS												
Brighton	0	0	0.00 %	0	0	0.00 %	2	7	28.57 %	7	8	87.50 %
Chili	0	0	0.00 %	3	3	100.00 %	2	6	33.33 %	5	10	50.00 %
Clarkson	0	0	0.00 %	0	0	0.00 %	2	4	50.00 %	1	2	50.00 %
East Rochester	0	0	0.00 %	2	2	100.00 %	1	2	50.00 %	4	7	57.14 %
Gates	0	0	0.00 %	1	2	50.00 %	10	18	55.56 %	10	16	62.50 %
Greece	0	0	0.00 %	6	12	50.00 %	11	31	35.48 %	33	59	55.93 %
Hamlin	0	0	0.00 %	0	0	0.00 %	0	0	0.00 %	5	5	100.00 %
Henrietta	0	0	0.00 %	1	1	100.00 %	5	5	100.00 %	6	8	75.00 %
Irondequoit	0	0	0.00 %	5	6	83.33 %	11	18	61.11 %	14	19	73.68 %
Mendon	0	0	0.00 %	0	1	0.00 %	1	1	100.00 %	2	2	100.00 %
Ogden	0	0	0.00 %	0	1	0.00 %	3	4	75.00 %	7	8	87.50 %
Parma	0	0	0.00 %	1	4	25.00 %	5	7	71.43 %	10	11	90.91 %
Penfield	0	0	0.00 %	2	3	66.67 %	4	7	57.14 %	5	6	83.33 %
Perinton	0	0	0.00 %	0	2	0.00 %	7	12	58.33 %	10	13	76.92 %
Pittsford	0	0	0.00 %	2	4	50.00 %	1	2	50.00 %	0	2	0.00 %
Riga	0	0	0.00 %	0	0	0.00 %	1	2	50.00 %	4	4	100.00 %
Rush	0	0	0.00 %	0	1	0.00 %	0	0	0.00 %	2	2	100.00 %
Sweden	0	0	0.00 %	1	3	33.33 %	5	6	83.33 %	4	9	44.44 %
Webster	0	0	0.00 %	1	2	50.00 %	11	11	100.00 %	5	10	50.00 %
Wheatland	0	0	0.00 %	0	0	0.00 %	2	2	100.00 %	1	1	100.00 %
TOTAL:	0	0	0.00 %	25	47	53.19 %	84	145	57.93 %	135	202	66.83 %
GRAND TOTAL:	0	0	0.00 %	56	116	48.28 %	172	329	52.28 %	222	369	60.16 %

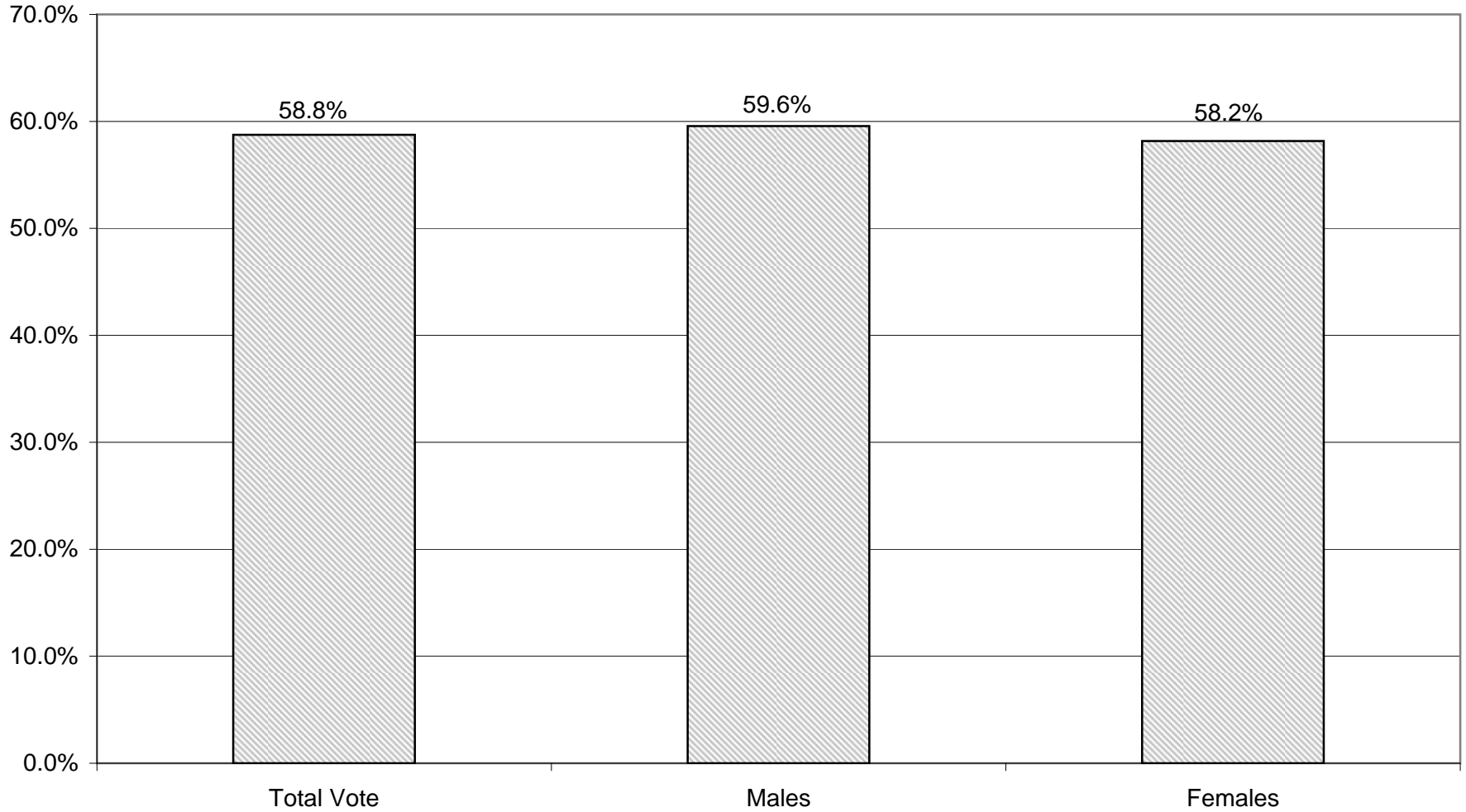
2008 GENERAL ELECTION
WORKING FAMILIES TURNOUT BY AGE

LT/LD SUMMARY

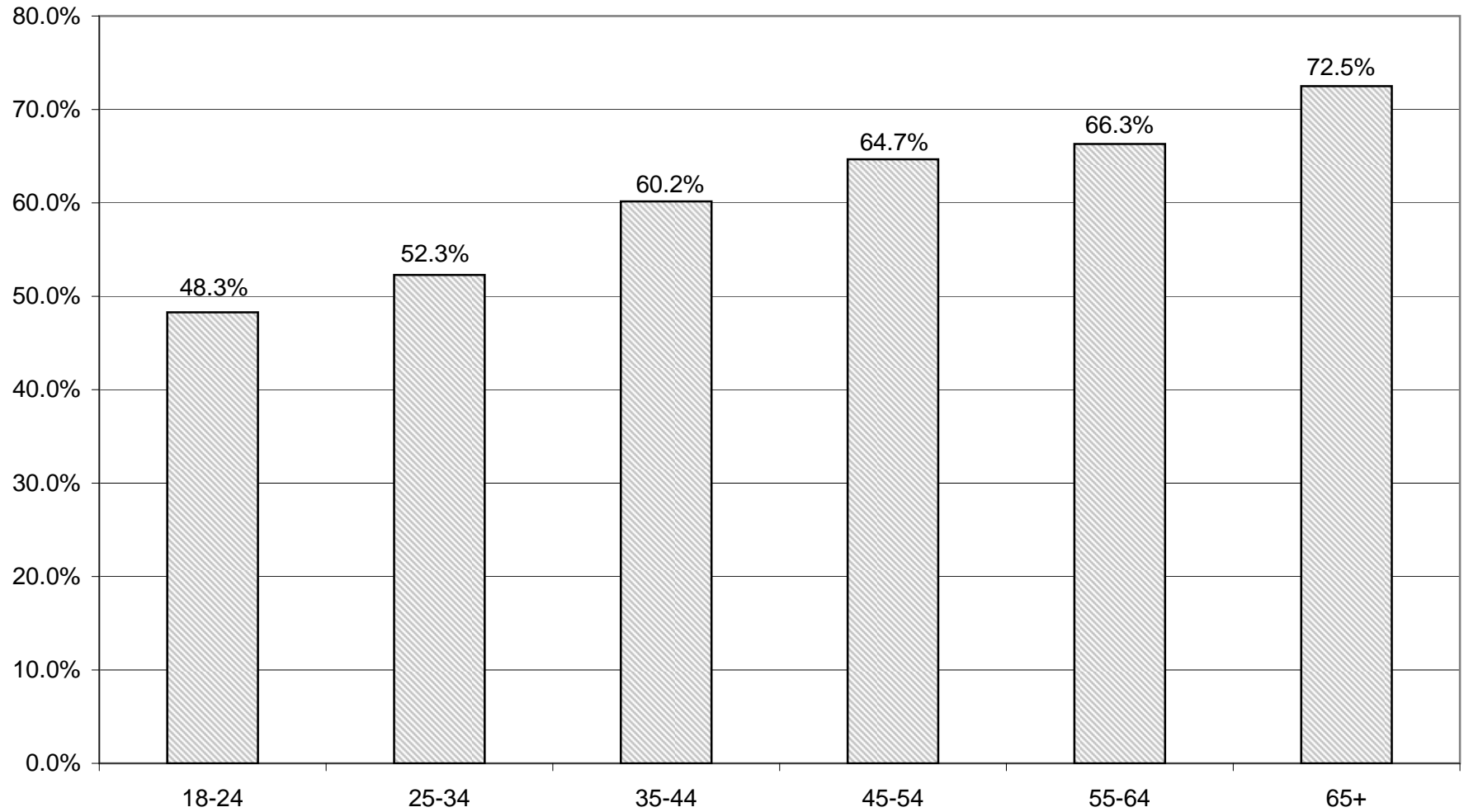
Part 2 of 2

LEGISLATIVE DISTRICT OR TOWN	45-54			55-64			65+		
	VOTED	REGISTERED	TURNOUT	VOTED	REGISTERED	TURNOUT	VOTED	REGISTERED	TURNOUT
CITY									
Leg. Dist. 06	3	6	50.00 %	0	0	0.00 %	0	0	0.00 %
Leg. Dist. 07	1	1	100.00 %	0	0	0.00 %	0	0	0.00 %
Leg. Dist. 21	5	10	50.00 %	1	3	33.33 %	0	1	0.00 %
Leg. Dist. 22	5	12	41.67 %	1	4	25.00 %	0	0	0.00 %
Leg. Dist. 23	7	9	77.78 %	0	2	0.00 %	4	4	100.00 %
Leg. Dist. 24	2	3	66.67 %	3	3	100.00 %	1	1	100.00 %
Leg. Dist. 25	4	6	66.67 %	1	5	20.00 %	0	0	0.00 %
Leg. Dist. 26	1	6	16.67 %	1	1	100.00 %	2	2	100.00 %
Leg. Dist. 27	11	12	91.67 %	3	5	60.00 %	3	3	100.00 %
Leg. Dist. 28	11	19	57.89 %	2	2	100.00 %	0	1	0.00 %
Leg. Dist. 29	2	9	22.22 %	3	3	100.00 %	0	0	0.00 %
TOTAL:	52	93	55.91 %	15	28	53.57 %	10	12	83.33 %
TOWNS									
Brighton	5	5	100.00 %	1	2	50.00 %	0	0	0.00 %
Chili	7	11	63.64 %	6	9	66.67 %	0	1	0.00 %
Clarkson	3	5	60.00 %	0	0	0.00 %	0	0	0.00 %
East Rochester	1	5	20.00 %	0	1	0.00 %	1	1	100.00 %
Gates	11	13	84.62 %	2	5	40.00 %	3	3	100.00 %
Greece	25	40	62.50 %	8	9	88.89 %	6	7	85.71 %
Hamlin	2	2	100.00 %	1	1	100.00 %	0	0	0.00 %
Henrietta	8	13	61.54 %	6	8	75.00 %	0	0	0.00 %
Irondequoit	10	13	76.92 %	3	4	75.00 %	1	4	25.00 %
Mendon	0	0	0.00 %	1	1	100.00 %	1	0	0.00 %
Ogden	6	12	50.00 %	3	3	100.00 %	0	0	0.00 %
Parma	11	12	91.67 %	4	4	100.00 %	3	3	100.00 %
Penfield	5	8	62.50 %	3	6	50.00 %	2	4	50.00 %
Perinton	6	8	75.00 %	0	3	0.00 %	0	0	0.00 %
Pittsford	5	5	100.00 %	2	2	100.00 %	0	1	0.00 %
Riga	0	1	0.00 %	1	1	100.00 %	0	0	0.00 %
Rush	1	2	50.00 %	1	1	100.00 %	0	0	0.00 %
Sweden	3	5	60.00 %	0	0	0.00 %	0	0	0.00 %
Webster	9	10	90.00 %	4	4	100.00 %	2	4	50.00 %
Wheatland	2	3	66.67 %	0	0	0.00 %	0	0	0.00 %
TOTAL:	120	173	69.36 %	46	64	71.88 %	19	28	67.86 %
GRAND TOTAL:	172	266	64.66 %	61	92	66.30 %	29	40	72.50 %

WORKING FAMILIES TURNOUT - TOTAL AND GENDER 2008 GENERAL ELECTION



WORKING FAMILIES TURNOUT BY AGE GROUP 2008 GENERAL ELECTION



BLANKS SUMMARY

2008 GENERAL ELECTION
BLANK TURNOUT BY GENDER

LT/LD SUMMARY

LEGISLATIVE DISTRICT OR TOWN CITY	TOTAL VOTERS			MALES			FEMALES		
	VOTED	REGISTERED	TURNOUT	VOTED	REGISTERED	TURNOUT	VOTED	REGISTERED	TURNOUT
Leg. Dist. 06	544	784	69.39 %	249	351	70.94 %	295	433	68.13 %
Leg. Dist. 07	244	371	65.77 %	110	175	62.86 %	134	196	68.37 %
Leg. Dist. 21	1,809	2,789	64.86 %	885	1,358	65.17 %	924	1,431	64.57 %
Leg. Dist. 22	696	1,611	43.20 %	287	685	41.90 %	409	926	44.17 %
Leg. Dist. 23	2,377	3,133	75.87 %	1,253	1,657	75.62 %	1,124	1,476	76.15 %
Leg. Dist. 24	1,302	1,811	71.89 %	679	925	73.41 %	623	886	70.32 %
Leg. Dist. 25	1,035	1,836	56.37 %	528	976	54.10 %	507	860	58.95 %
Leg. Dist. 26	940	1,558	60.33 %	421	698	60.32 %	519	860	60.35 %
Leg. Dist. 27	1,230	2,107	58.38 %	553	988	55.97 %	677	1,119	60.50 %
Leg. Dist. 28	976	2,015	48.44 %	442	883	50.06 %	534	1,132	47.17 %
Leg. Dist. 29	1,115	2,205	50.57 %	497	948	52.43 %	618	1,257	49.16 %
TOTAL:	12,268	20,220	60.67 %	5,904	9,644	61.22 %	6,364	10,576	60.17 %
TOWNS									
Brighton	4,255	5,439	78.23 %	2,096	2,653	79.00 %	2,159	2,786	77.49 %
Chili	3,381	4,650	72.71 %	1,609	2,269	70.91 %	1,772	2,381	74.42 %
Clarkson	600	859	69.85 %	296	427	69.32 %	304	432	70.37 %
East Rochester	709	1,023	69.31 %	313	468	66.88 %	396	555	71.35 %
Gates	2,840	4,307	65.94 %	1,358	2,064	65.79 %	1,482	2,243	66.07 %
Greece	11,105	15,685	70.80 %	5,233	7,448	70.26 %	5,872	8,237	71.29 %
Hamlin	830	1,261	65.82 %	415	618	67.15 %	415	643	64.54 %
Henrietta	3,940	5,408	72.86 %	2,008	2,760	72.75 %	1,932	2,648	72.96 %
Irondequoit	6,521	8,824	73.90 %	3,094	4,193	73.79 %	3,427	4,631	74.00 %
Mendon	1,165	1,460	79.79 %	563	710	79.30 %	602	750	80.27 %
Ogden	2,353	3,221	73.05 %	1,147	1,577	72.73 %	1,206	1,644	73.36 %
Parma	2,001	2,813	71.13 %	954	1,350	70.67 %	1,047	1,463	71.57 %
Penfield	5,087	6,528	77.93 %	2,471	3,156	78.30 %	2,616	3,372	77.58 %
Perinton	6,558	8,378	78.28 %	3,204	4,147	77.26 %	3,354	4,231	79.27 %
Pittsford	3,790	4,825	78.55 %	1,849	2,344	78.88 %	1,941	2,481	78.23 %
Riga	693	916	75.66 %	340	464	73.28 %	353	452	78.10 %
Rush	484	651	74.35 %	232	323	71.83 %	252	328	76.83 %
Sweden	1,142	1,573	72.60 %	552	748	73.80 %	590	825	71.52 %
Webster	5,837	7,577	77.04 %	2,769	3,607	76.77 %	3,068	3,970	77.28 %
Wheatland	609	811	75.09 %	289	390	74.10 %	320	421	76.01 %
TOTAL:	63,900	86,209	74.12 %	30,792	41,716	73.81 %	33,108	44,493	74.41 %
GRAND TOTAL:	76,168	106,429	71.57 %	36,696	51,360	71.45 %	39,472	55,069	71.68 %

2008 GENERAL ELECTION
BLANK TURNOUT BY AGE

LT/LD SUMMARY
Part 1 of 2

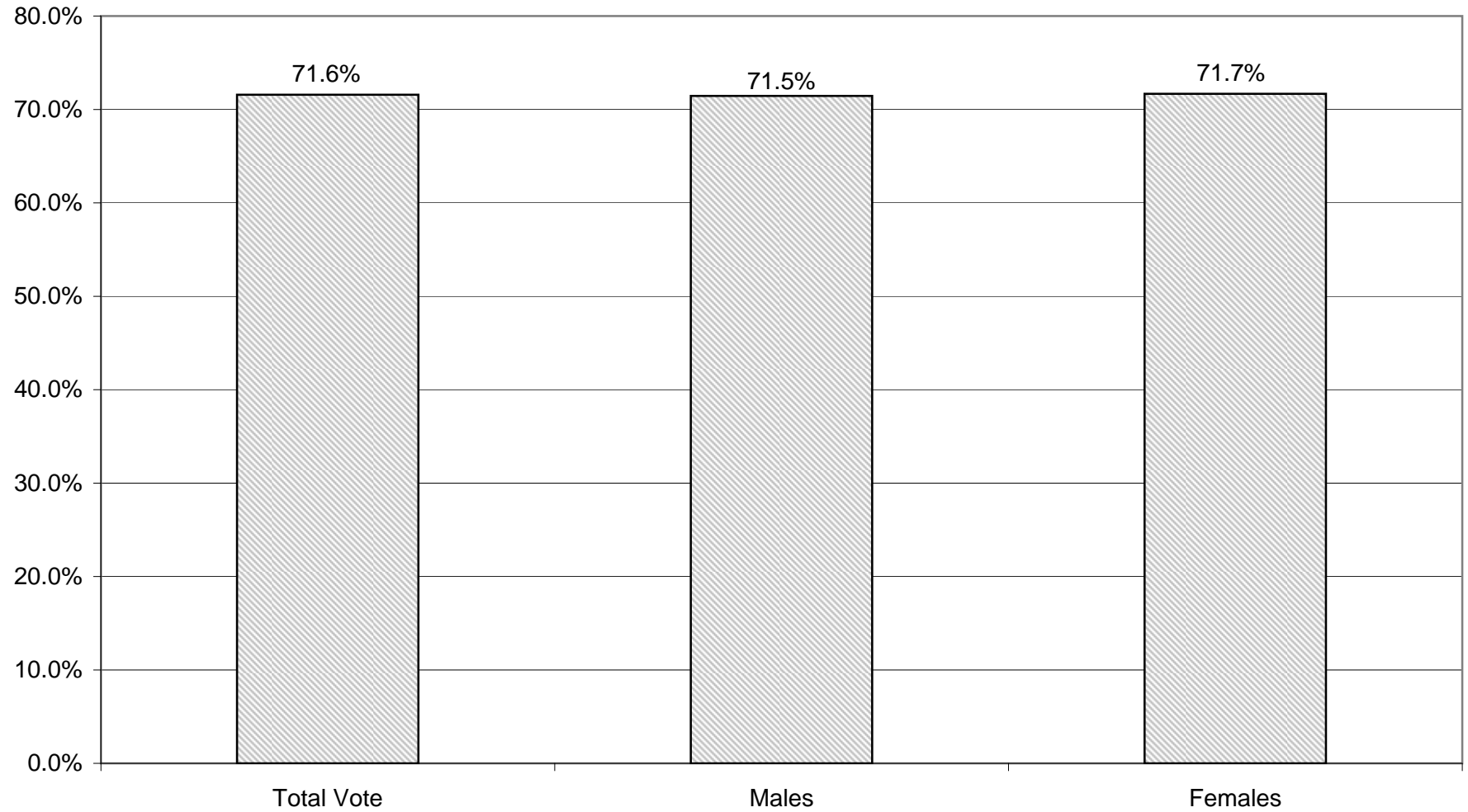
LEGISLATIVE DISTRICT OR TOWN CITY	NDOB			18-24			25-34			35-44		
	VOTED	REGISTERED	TURNOUT	VOTED	REGISTERED	TURNOUT	VOTED	REGISTERED	TURNOUT	VOTED	REGISTERED	TURNOUT
Leg. Dist. 06	4	4	100.00 %	27	48	56.25 %	104	179	58.10 %	88	137	64.23 %
Leg. Dist. 07	0	0	0.00 %	20	33	60.61 %	34	67	50.75 %	38	57	66.67 %
Leg. Dist. 21	5	6	83.33 %	168	306	54.90 %	480	787	60.99 %	365	596	61.24 %
Leg. Dist. 22	5	5	100.00 %	129	288	44.79 %	160	405	39.51 %	146	369	39.57 %
Leg. Dist. 23	14	15	93.33 %	178	258	68.99 %	769	1,054	72.96 %	450	621	72.46 %
Leg. Dist. 24	5	5	100.00 %	88	138	63.77 %	397	573	69.28 %	201	299	67.22 %
Leg. Dist. 25	2	3	66.67 %	177	347	51.01 %	288	522	55.17 %	175	312	56.09 %
Leg. Dist. 26	4	4	100.00 %	93	167	55.69 %	210	427	49.18 %	189	321	58.88 %
Leg. Dist. 27	8	11	72.73 %	170	309	55.02 %	273	546	50.00 %	238	427	55.74 %
Leg. Dist. 28	4	8	50.00 %	132	320	41.25 %	213	485	43.92 %	159	396	40.15 %
Leg. Dist. 29	6	9	66.67 %	147	320	45.94 %	223	527	42.31 %	204	416	49.04 %
TOTAL:	57	70	81.43 %	1,329	2,534	52.45 %	3,151	5,572	56.55 %	2,253	3,951	57.02 %
TOWNS												
Brighton	29	32	90.63 %	329	499	65.93 %	662	982	67.41 %	617	842	73.28 %
Chili	12	19	63.16 %	323	520	62.12 %	512	912	56.14 %	521	769	67.75 %
Clarkson	0	0	0.00 %	54	89	60.67 %	73	138	52.90 %	118	191	61.78 %
East Rochester	8	9	88.89 %	59	121	48.76 %	146	235	62.13 %	107	160	66.88 %
Gates	2	6	33.33 %	221	411	53.77 %	457	858	53.26 %	428	743	57.60 %
Greece	58	67	86.57 %	887	1,581	56.10 %	1,617	2,929	55.21 %	1,641	2,438	67.31 %
Hamlin	0	0	0.00 %	78	146	53.42 %	99	217	45.62 %	137	225	60.89 %
Henrietta	7	11	63.64 %	462	686	67.35 %	614	1,004	61.16 %	663	971	68.28 %
Irondequoit	52	69	75.36 %	474	822	57.66 %	958	1,559	61.45 %	1,034	1,456	71.02 %
Mendon	4	4	100.00 %	95	175	54.29 %	83	154	53.90 %	206	238	86.55 %
Ogden	12	15	80.00 %	213	351	60.68 %	286	512	55.86 %	381	563	67.67 %
Parma	3	4	75.00 %	192	371	51.75 %	225	442	50.90 %	324	480	67.50 %
Penfield	25	32	78.13 %	370	600	61.67 %	545	913	59.69 %	856	1,105	77.47 %
Perinton	12	12	100.00 %	511	918	55.66 %	656	1,140	57.54 %	1,025	1,364	75.15 %
Pittsford	10	13	76.92 %	293	504	58.13 %	306	537	56.98 %	561	740	75.81 %
Riga	1	1	100.00 %	65	110	59.09 %	77	137	56.20 %	123	163	75.46 %
Rush	1	1	100.00 %	34	58	58.62 %	30	83	36.14 %	53	85	62.35 %
Sweden	0	0	0.00 %	129	215	60.00 %	164	270	60.74 %	164	255	64.31 %
Webster	32	43	74.42 %	426	663	64.25 %	599	1,043	57.43 %	969	1,287	75.29 %
Wheatland	1	1	100.00 %	67	93	72.04 %	84	159	52.83 %	86	121	71.07 %
TOTAL:	269	339	79.35 %	5,282	8,933	59.13 %	8,193	14,224	57.60 %	10,014	14,196	70.54 %
GRAND TOTAL:	326	409	79.71 %	6,611	11,467	57.65 %	11,344	19,796	57.30 %	12,267	18,147	67.60 %

2008 GENERAL ELECTION
BLANK TURNOUT BY AGE

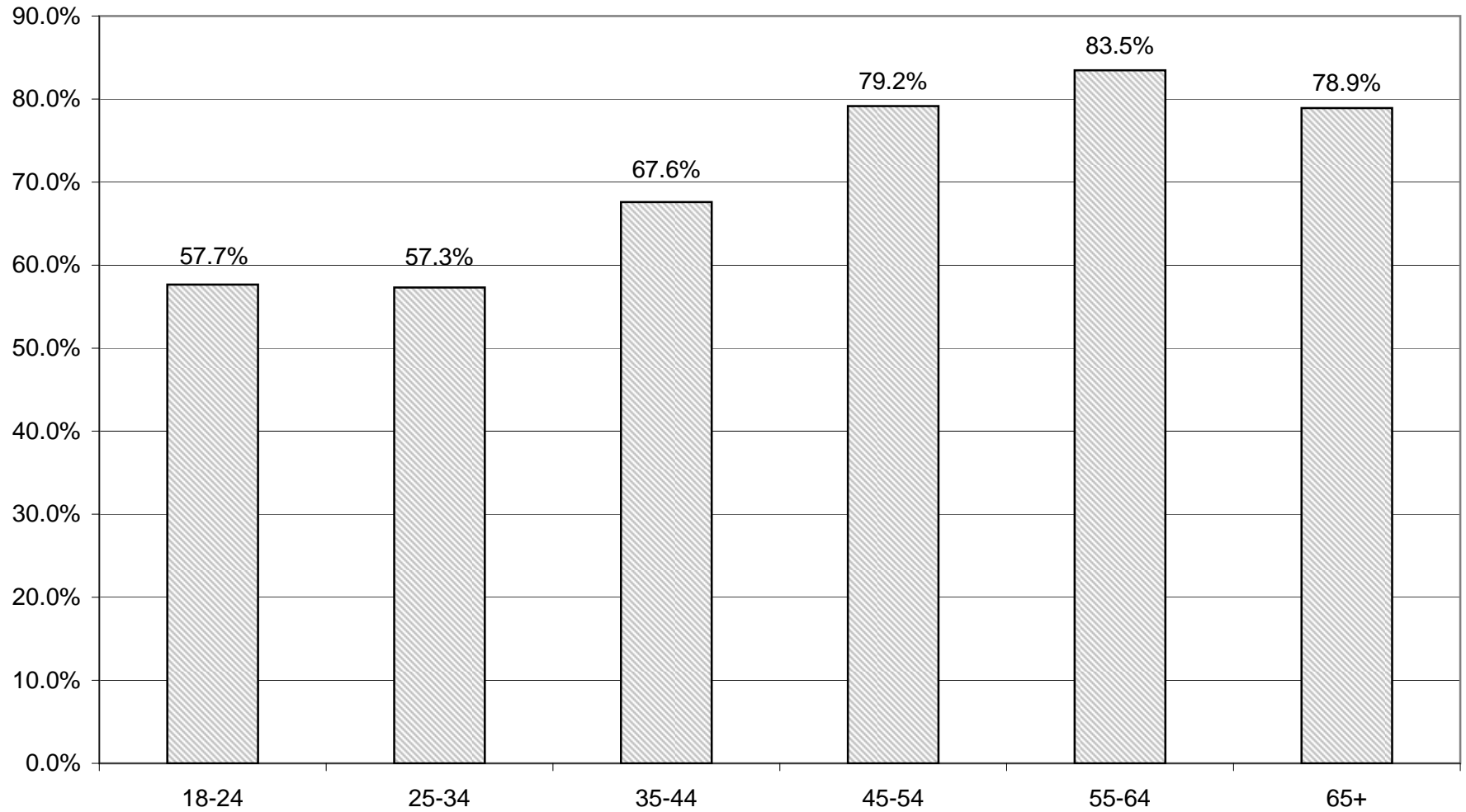
LT/LD SUMMARY
Part 2 of 2

LEGISLATIVE DISTRICT OR TOWN CITY	45-54			55-64			65+		
	VOTED	REGISTERED	TURNOUT	VOTED	REGISTERED	TURNOUT	VOTED	REGISTERED	TURNOUT
Leg. Dist. 06	130	164	79.27 %	115	152	75.66 %	76	100	76.00 %
Leg. Dist. 07	57	74	77.03 %	57	86	66.28 %	38	54	70.37 %
Leg. Dist. 21	332	472	70.34 %	279	379	73.61 %	180	243	74.07 %
Leg. Dist. 22	123	271	45.39 %	87	177	49.15 %	46	96	47.92 %
Leg. Dist. 23	362	450	80.44 %	370	444	83.33 %	234	291	80.41 %
Leg. Dist. 24	228	293	77.82 %	221	270	81.85 %	162	233	69.53 %
Leg. Dist. 25	148	278	53.24 %	155	224	69.20 %	90	150	60.00 %
Leg. Dist. 26	198	294	67.35 %	163	216	75.46 %	83	129	64.34 %
Leg. Dist. 27	212	352	60.23 %	217	289	75.09 %	112	173	64.74 %
Leg. Dist. 28	208	387	53.75 %	162	257	63.04 %	98	162	60.49 %
Leg. Dist. 29	220	407	54.05 %	202	307	65.80 %	113	219	51.60 %
TOTAL:	2,218	3,442	64.44 %	2,028	2,801	72.40 %	1,232	1,850	66.59 %
TOWNS									
Brighton	877	1,038	84.49 %	898	1,013	88.65 %	843	1,033	81.61 %
Chili	842	1,029	81.83 %	758	884	85.75 %	413	517	79.88 %
Clarkson	180	228	78.95 %	119	137	86.86 %	56	76	73.68 %
East Rochester	148	192	77.08 %	134	178	75.28 %	107	128	83.59 %
Gates	684	918	74.51 %	541	693	78.07 %	507	678	74.78 %
Greece	2,704	3,425	78.95 %	2,573	3,152	81.63 %	1,625	2,093	77.64 %
Hamlin	228	306	74.51 %	216	269	80.30 %	72	98	73.47 %
Henrietta	879	1,142	76.97 %	770	920	83.70 %	545	674	80.86 %
Irondequoit	1,428	1,777	80.36 %	1,456	1,733	84.02 %	1,119	1,408	79.47 %
Mendon	363	407	89.19 %	267	306	87.25 %	147	176	83.52 %
Ogden	670	824	81.31 %	517	625	82.72 %	274	331	82.78 %
Parma	590	704	83.81 %	421	504	83.53 %	246	308	79.87 %
Penfield	1,237	1,486	83.24 %	1,216	1,381	88.05 %	838	1,011	82.89 %
Perinton	1,621	1,849	87.67 %	1,605	1,770	90.68 %	1,128	1,325	85.13 %
Pittsford	962	1,126	85.44 %	858	962	89.19 %	800	943	84.84 %
Riga	189	233	81.12 %	152	176	86.36 %	86	96	89.58 %
Rush	154	180	85.56 %	134	152	88.16 %	78	92	84.78 %
Sweden	282	354	79.66 %	279	314	88.85 %	124	165	75.15 %
Webster	1,558	1,866	83.49 %	1,319	1,517	86.95 %	934	1,158	80.66 %
Wheatland	165	190	86.84 %	138	161	85.71 %	68	86	79.07 %
TOTAL:	15,761	19,274	81.77 %	14,371	16,847	85.30 %	10,010	12,396	80.75 %
GRAND TOTAL:	17,979	22,716	79.15 %	16,399	19,648	83.46 %	11,242	14,246	78.91 %

BLANKS TURNOUT - TOTAL AND GENDER 2008 GENERAL ELECTION

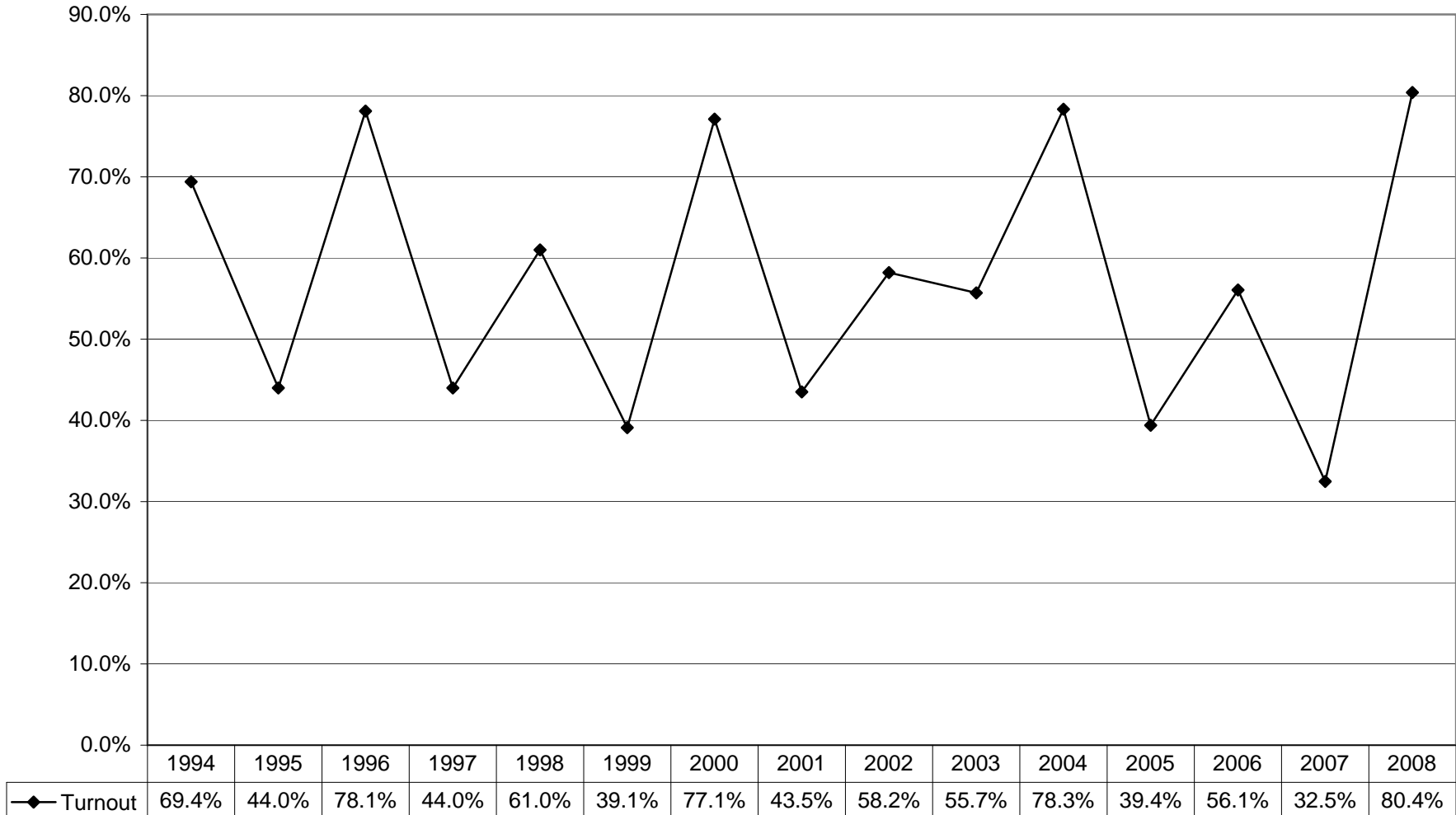


BLANKS TURNOUT BY AGE GROUP 2008 GENERAL ELECTION

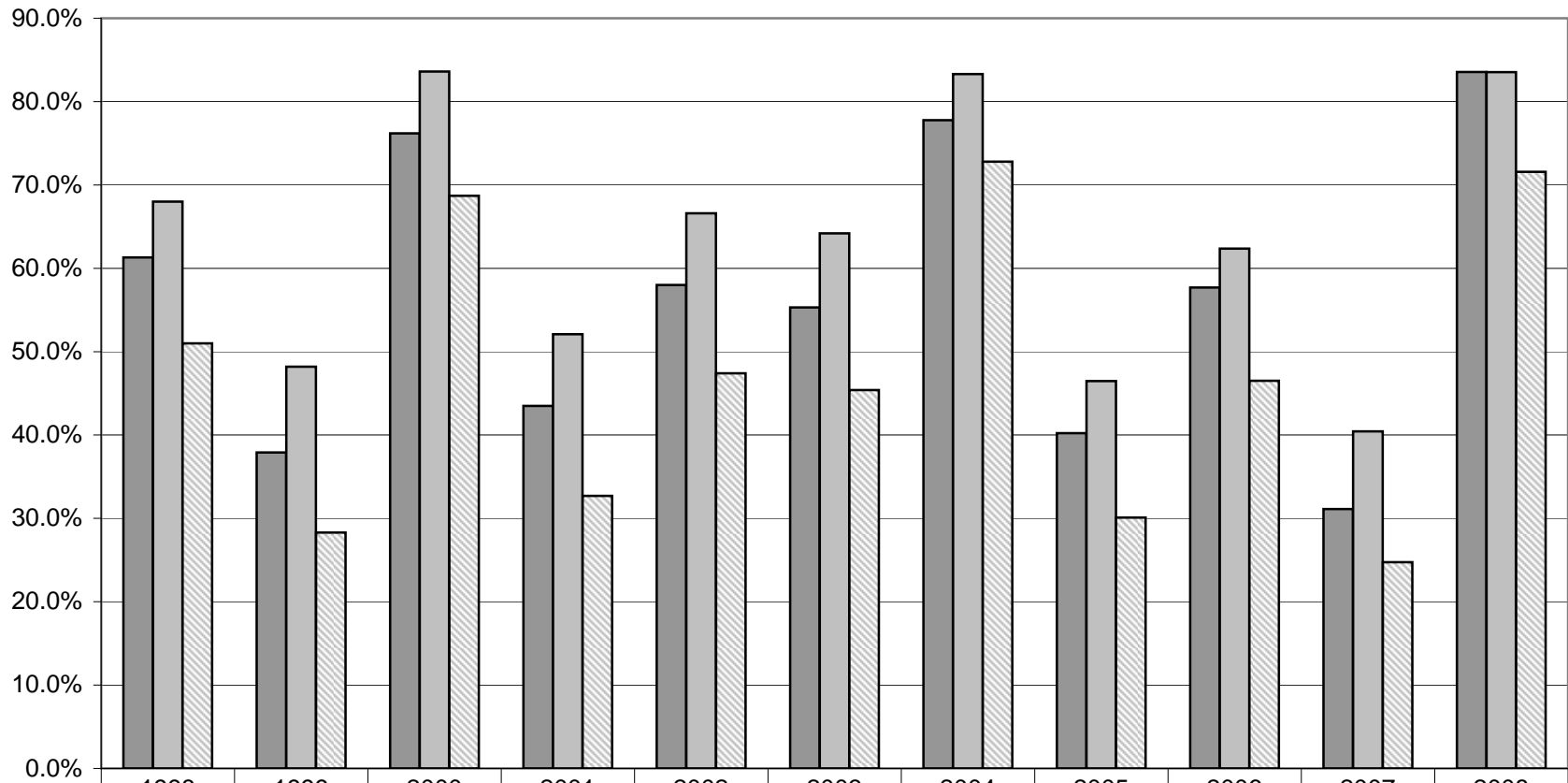


HISTORIC DATA

VOTER TURNOUT FOR THE GENERAL ELECTION 1994 Through 2008



VOTER TURNOUT BY PARTY 1998 Through 2008 General Elections



	1998	1999	2000	2001	2002	2003	2004	2005	2006	2007	2008
■ Democrats	61.3%	37.9%	76.2%	43.5%	58.0%	55.3%	77.8%	40.2%	57.7%	31.1%	83.6%
■ Republicans	68.0%	48.2%	83.6%	52.1%	66.6%	64.2%	83.3%	46.5%	62.4%	40.4%	83.5%
▨ Blanks	51.0%	28.3%	68.7%	32.7%	47.4%	45.4%	72.8%	30.1%	46.5%	24.7%	71.6%