



VOTER TURNOUT SUMMARY REPORT 2000 GENERAL ELECTION

Monroe County Board of Elections
39 West Main Street, Rochester, New York 14614

April 26, 2001

M. Betsy Relin
Commissioner of Elections

Peter M. Quinn
Commissioner of Elections

CONTENTS DESCRIPTION

General Summary	Page 1
Republican Summary	Page 12
Democratic Summary	Page 18
Independence Summary	Page 24
Conservative Summary	Page 30
Liberal Summary	Page 36
Right To Life Summary	Page 42
Green Summary	Page 48
Working Families Summary	Page 54
Blanks Summary	Page 60
Historical Data.....	Page 66

GENERAL SUMMARY

2000 GENERAL ELECTION
VOTER TURNOUT BY GENDER
ALL VOTERS

LT/LD SUMMARY

LEGISLATIVE DISTRICT OR TOWN	REGISTERED VOTERS			MALES			FEMALES		
	VOTED	REGISTERED	TURNOUT	VOTED	REGISTERED	TURNOUT	VOTED	REGISTERED	TURNOUT
Leg. Dist. 06	4,527	6,173	73.3	1,930	2,661	72.5	2,597	3,512	73.9
Leg. Dist. 21	8,084	11,591	69.7	3,510	5,155	68.1	4,574	6,436	71.1
Leg. Dist. 22	4,268	8,762	48.7	1,563	3,748	41.7	2,705	5,014	53.9
Leg. Dist. 23	7,496	11,306	66.3	3,453	5,316	65.0	4,043	5,990	67.5
Leg. Dist. 24	10,995	13,841	79.4	4,823	6,154	78.4	6,172	7,687	80.3
Leg. Dist. 25	5,307	8,816	60.2	2,093	3,817	54.8	3,214	4,999	64.3
Leg. Dist. 26	5,765	9,031	63.8	2,531	3,975	63.7	3,234	5,056	64.0
Leg. Dist. 27	7,813	11,544	67.7	3,093	4,948	62.5	4,720	6,596	71.6
Leg. Dist. 28	4,340	7,548	57.5	1,840	3,291	55.9	2,500	4,257	58.7
Leg. Dist. 29	6,034	9,600	62.9	2,453	4,048	60.6	3,581	5,552	64.5
CITY	64,629	98,212	65.8	27,289	43,113	63.3	37,340	55,099	67.8
Brighton	18,842	22,679	83.1	8,363	10,104	82.8	10,479	12,575	83.3
Chili	13,503	17,211	78.5	6,336	8,093	78.3	7,167	9,118	78.6
Clarkson	2,679	3,409	78.6	1,275	1,611	79.1	1,404	1,798	78.1
East Rochester	2,980	3,981	74.9	1,297	1,745	74.3	1,683	2,236	75.3
Gates	13,159	17,772	74.0	6,002	8,175	73.4	7,157	9,597	74.6
Greece	45,083	58,836	76.6	20,773	27,173	76.4	24,310	31,663	76.8
Hamlin	3,891	5,047	77.1	1,912	2,474	77.3	1,979	2,573	76.9
Henrietta	15,192	19,281	78.8	7,132	9,153	77.9	8,060	10,128	79.6
Irondequoit	27,758	34,690	80.0	12,347	15,517	79.6	15,411	19,173	80.4
Mendon	4,689	5,637	83.2	2,221	2,696	82.4	2,468	2,941	83.9
Ogden	8,991	11,134	80.8	4,258	5,298	80.4	4,733	5,836	81.1
Parma	6,814	8,844	77.0	3,273	4,275	76.6	3,541	4,569	77.5
Penfield	18,448	22,323	82.6	8,615	10,478	82.2	9,833	11,845	83.0
Perinton	26,070	30,910	84.3	12,167	14,527	83.8	13,903	16,383	84.9
Pittsford	15,431	18,102	85.2	7,219	8,527	84.7	8,212	9,575	85.8
Riga	2,792	3,531	79.1	1,323	1,684	78.6	1,469	1,847	79.5
Rush	2,055	2,396	85.8	999	1,182	84.5	1,056	1,214	87.0
Sweden	5,029	6,615	76.0	2,350	3,078	76.3	2,679	3,537	75.7
Webster	19,846	24,229	81.9	9,279	11,423	81.2	10,567	12,806	82.5
Wheatland	2,618	3,202	81.8	1,242	1,498	82.9	1,376	1,704	80.8
TOWNS	255,870	319,829	80.0	118,383	148,711	79.6	137,487	171,118	80.3
GRAND TOTAL	320,499	418,041	76.7	145,672	191,824	75.9	174,827	226,217	77.3

2000 GENERAL ELECTION
VOTER TURNOUT BY PARTY

LT/LD SUMMARY

LEGISLATIVE DISTRICT OR TOWN	REPUBLICANS			DEMOCRATS			INDEPENDENCE			CONSERVATIVE		
	VOTED	REGISTERED	TURNOUT	VOTED	REGISTERED	TURNOUT	VOTED	REGISTERED	TURNOUT	VOTED	REGISTERED	TURNOUT
Leg. Dist. 06	1,632	2,087	78.2	1,692	2,193	77.2	97	165	58.8	134	180	74.4
Leg. Dist. 21	1,842	2,370	77.7	4,322	6,070	71.2	175	288	60.8	103	157	65.6
Leg. Dist. 22	301	641	47.0	3,448	6,430	53.6	56	130	43.1	19	41	46.3
Leg. Dist. 23	1,335	1,881	71.0	4,297	6,219	69.1	221	355	62.3	61	105	58.1
Leg. Dist. 24	2,857	3,501	81.6	5,198	6,262	83.0	232	322	72.0	148	186	79.6
Leg. Dist. 25	555	898	61.8	3,884	6,147	63.2	73	154	47.4	36	59	61.0
Leg. Dist. 26	1,505	2,143	70.2	2,819	4,231	66.6	141	240	58.8	130	196	66.3
Leg. Dist. 27	993	1,356	73.2	5,557	7,847	70.8	116	189	61.4	58	90	64.4
Leg. Dist. 28	1,063	1,595	66.6	2,394	4,024	59.5	83	163	50.9	92	145	63.4
Leg. Dist. 29	1,326	1,906	69.6	3,576	5,457	65.5	82	181	45.3	72	114	63.2
CITY	13,409	18,378	73.0	37,187	54,880	67.8	1,276	2,187	58.3	853	1,273	67.0
Brighton	6,642	7,865	84.5	7,421	8,595	86.3	363	473	76.7	189	247	76.5
Chili	6,031	7,112	84.8	3,840	4,879	78.7	237	332	71.4	350	445	78.7
Clarkson	1,302	1,528	85.2	673	845	79.6	63	94	67.0	72	95	75.8
East Rochester	1,216	1,572	77.4	882	1,158	76.2	65	98	66.3	65	89	73.0
Gates	5,565	6,931	80.3	4,296	5,671	75.8	212	304	69.7	305	411	74.2
Greece	20,213	24,377	82.9	12,400	16,075	77.1	803	1,207	66.5	1,279	1,683	76.0
Hamlin	2,040	2,389	85.4	831	1,098	75.7	82	134	61.2	118	153	77.1
Henrietta	6,086	7,168	84.9	4,875	6,029	80.9	311	442	70.4	425	539	78.8
Irondequoit	11,023	13,134	83.9	9,275	11,362	81.6	473	701	67.5	570	730	78.1
Mendon	2,311	2,679	86.3	1,118	1,351	82.8	79	111	71.2	81	103	78.6
Ogden	4,208	4,898	85.9	2,161	2,656	81.4	161	213	75.6	305	375	81.3
Parma	3,225	3,833	84.1	1,564	2,034	76.9	111	167	66.5	199	253	78.7
Penfield	8,012	9,234	86.8	5,124	6,122	83.7	343	448	76.6	332	406	81.8
Perinton	11,782	13,296	88.6	7,041	8,253	85.3	545	742	73.5	415	516	80.4
Pittsford	7,349	8,235	89.2	4,050	4,683	86.5	253	342	74.0	171	198	86.4
Riga	1,482	1,743	85.0	594	770	77.1	45	75	60.0	68	86	79.1
Rush	906	1,006	90.1	533	617	86.4	33	41	80.5	44	59	74.6
Sweden	2,244	2,665	84.2	1,488	1,904	78.2	100	177	56.5	95	140	67.9
Webster	8,266	9,526	86.8	5,605	6,749	83.0	382	496	77.0	455	555	82.0
Wheatland	1,158	1,330	87.1	744	904	82.3	53	82	64.6	67	86	77.9
TOWNS	111,061	130,521	85.1	74,515	91,755	81.2	4,714	6,679	70.6	5,605	7,169	78.2
GRAND TOTAL	124,470	148,899	83.6	111,702	146,635	76.2	5,990	8,866	67.6	6,458	8,442	76.5

2000 GENERAL ELECTION
VOTER TURNOUT BY PARTY

LT/LD SUMMARY

LEGISLATIVE DISTRICT OR TOWN	LIBERAL			RIGHT TO LIFE			GREEN			WORKING FAMILIES			BLANKS		
	VOTED	REGISTERED	TURNOUT	VOTED	REGISTERED	TURNOUT	VOTED	REGISTERED	TURNOUT	VOTED	REGISTERED	TURNOUT	VOTED	REGISTERED	TURNOUT
Leg. Dist. 06	34	69	49.3	20	34	58.8	4	8	50.0	1	5	20.0	913	1,432	63.8
Leg. Dist. 21	62	113	54.9	35	59	59.3	14	16	87.5	2	7	28.6	1,529	2,511	60.9
Leg. Dist. 22	17	54	31.5	10	46	21.7	0	2	0.0	5	15	33.3	412	1,403	29.4
Leg. Dist. 23	67	125	53.6	29	56	51.8	45	57	78.9	5	10	50.0	1,436	2,498	57.5
Leg. Dist. 24	106	164	64.6	41	65	63.1	49	61	80.3	6	9	66.7	2,358	3,271	72.1
Leg. Dist. 25	26	58	44.8	20	46	43.5	17	21	81.0	2	8	25.0	694	1,425	48.7
Leg. Dist. 26	48	90	53.3	35	73	47.9	7	9	77.8	5	13	38.5	1,075	2,036	52.8
Leg. Dist. 27	50	74	67.6	25	42	59.5	5	7	71.4	2	8	25.0	1,007	1,931	52.1
Leg. Dist. 28	32	69	46.4	24	59	40.7	3	5	60.0	2	8	25.0	647	1,480	43.7
Leg. Dist. 29	33	59	55.9	26	51	51.0	3	6	50.0	2	11	18.2	914	1,815	50.4
CITY	475	875	54.3	265	531	49.9	147	192	76.6	32	94	34.0	10,985	19,802	55.5
Brighton	93	127	73.2	27	38	71.1	21	33	63.6	6	11	54.5	4,080	5,290	77.1
Chili	73	114	64.0	74	100	74.0	5	9	55.6	7	7	100.0	2,886	4,213	68.5
Clarkson	12	16	75.0	26	31	83.9	1	2	50.0	0	2	0.0	530	796	66.6
East Rochester	29	40	72.5	20	27	74.1	4	4	100.0	0	1	0.0	699	992	70.5
Gates	65	132	49.2	41	68	60.3	5	7	71.4	4	9	44.4	2,666	4,239	62.9
Greece	258	487	53.0	195	267	73.0	23	35	65.7	9	19	47.4	9,903	14,686	67.4
Hamlin	24	38	63.2	18	29	62.1	1	3	33.3	2	2	100.0	775	1,201	64.5
Henrietta	111	162	68.5	56	77	72.7	14	21	66.7	6	11	54.5	3,308	4,832	68.5
Irondequoit	154	233	66.1	115	135	85.2	18	31	58.1	13	17	76.5	6,117	8,347	73.3
Mendon	10	26	38.5	11	15	73.3	3	3	100.0	0	0	0.0	1,076	1,349	79.8
Ogden	52	93	55.9	44	62	71.0	2	5	40.0	1	5	20.0	2,057	2,827	72.8
Parma	27	64	42.2	32	44	72.7	3	6	50.0	4	5	80.0	1,649	2,438	67.6
Penfield	83	138	60.1	54	70	77.1	17	22	77.3	5	8	62.5	4,478	5,875	76.2
Perinton	86	153	56.2	78	95	82.1	12	18	66.7	1	4	25.0	6,110	7,833	78.0
Pittsford	50	74	67.6	34	42	81.0	13	16	81.3	1	2	50.0	3,510	4,510	77.8
Riga	18	28	64.3	15	27	55.6	1	2	50.0	3	4	75.0	566	796	71.1
Rush	13	22	59.1	8	13	61.5	4	4	100.0	2	2	100.0	512	632	81.0
Sweden	29	58	50.0	35	53	66.0	11	12	91.7	2	4	50.0	1,025	1,602	64.0
Webster	108	175	61.7	86	113	76.1	10	13	76.9	5	9	55.6	4,929	6,593	74.8
Wheatland	24	36	66.7	7	8	87.5	4	4	100.0	2	4	50.0	559	748	74.7
TOWNS	1,319	2,216	59.5	976	1,314	74.3	172	250	68.8	73	126	57.9	57,435	79,799	72.0
GRAND TOTAL	1,794	3,091	58.0	1,241	1,845	67.3	319	442	72.2	105	220	47.7	68,420	99,601	68.7

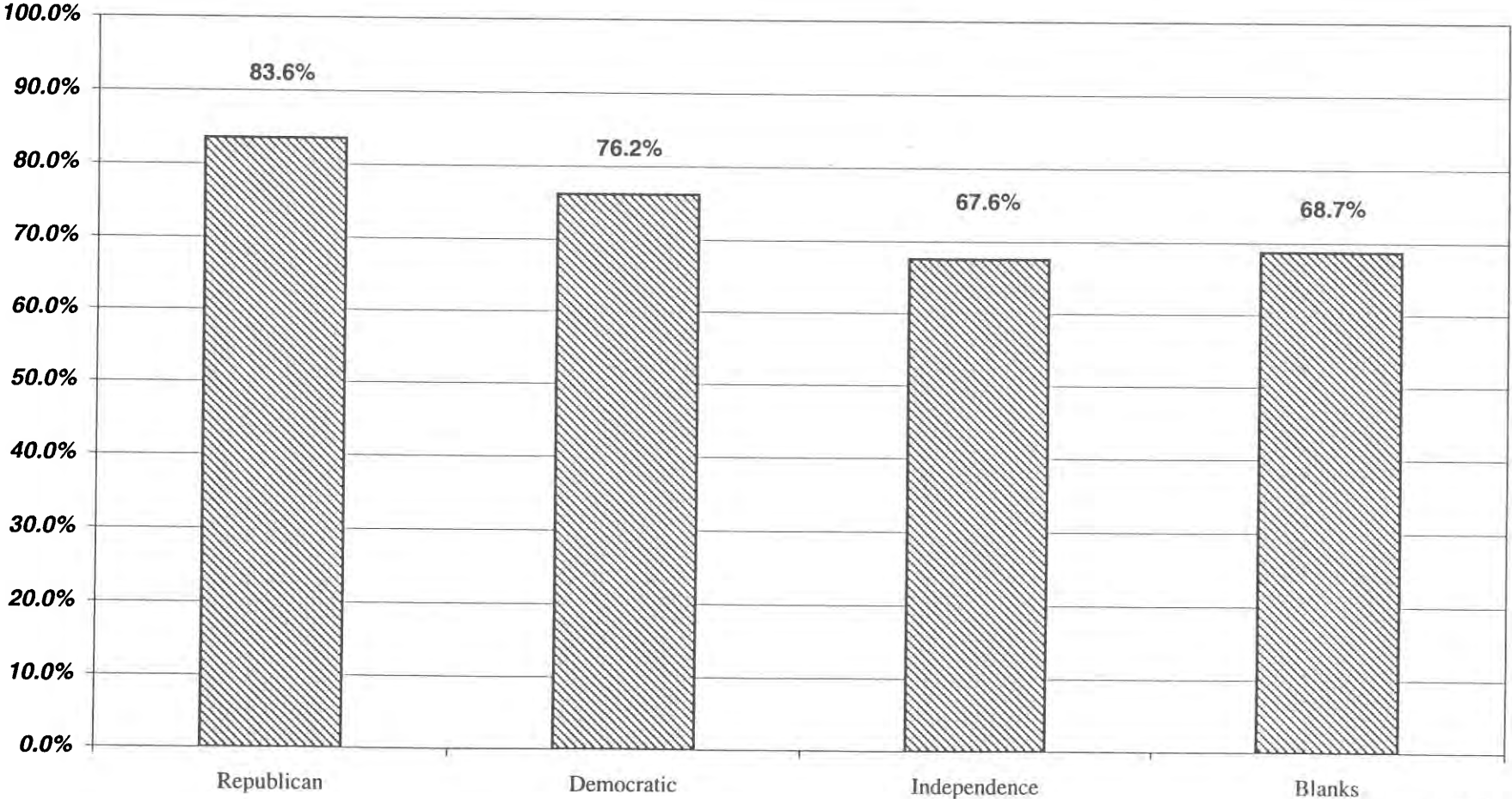
2000 GENERAL ELECTION
VOTER TURNOUT BY AGE GROUP
LT/LD SUMMARY

LEGISLATIVE DISTRICT OR TOWN	18-24			25-34			35-44		
	VOTED	REGISTERED	TURNOUT	VOTED	REGISTERED	TURNOUT	VOTED	REGISTERED	TURNOUT
Leg. Dist. 06	243	447	54.4	705	1,164	60.6	1,002	1,344	74.6
Leg. Dist. 21	607	1,256	48.3	1,787	2,837	63.0	1,886	2,629	71.7
Leg. Dist. 22	384	1,445	26.6	745	1,987	37.5	972	1,937	50.2
Leg. Dist. 23	872	1,617	53.9	2,015	3,308	60.9	1,436	2,213	64.9
Leg. Dist. 24	741	1,200	61.8	2,215	3,048	72.7	2,296	2,793	82.2
Leg. Dist. 25	530	1,206	43.9	1,022	1,969	51.9	1,096	1,859	59.0
Leg. Dist. 26	464	1,085	42.8	1,091	2,098	52.0	1,445	2,167	66.7
Leg. Dist. 27	634	1,347	47.1	1,431	2,450	58.4	1,879	2,746	68.4
Leg. Dist. 28	289	842	34.3	674	1,509	44.7	937	1,627	57.6
Leg. Dist. 29	404	1,069	37.8	907	1,876	48.3	1,223	1,927	63.5
CITY	5,168	11,514	44.9	12,592	22,246	56.6	14,172	21,242	66.7
Brighton	1,170	1,867	62.7	2,608	3,709	70.3	3,482	3,968	87.8
Chili	925	1,849	50.0	1,907	2,961	64.4	3,210	3,841	83.6
Clarkson	163	336	48.5	435	645	67.4	696	839	83.0
East Rochester	227	389	58.4	496	777	63.8	678	869	78.0
Gates	753	1,575	47.8	1,739	3,010	57.8	2,586	3,420	75.6
Greece	2,855	5,727	49.9	5,358	9,077	59.0	9,973	12,396	80.5
Hamlin	284	540	52.6	540	851	63.5	1,086	1,365	79.6
Henrietta	1,087	1,830	59.4	2,303	3,523	65.4	3,622	4,459	81.2
Irondequoit	1,265	2,358	53.6	3,501	5,097	68.7	5,367	6,501	82.6
Mendon	260	555	46.8	525	773	67.9	1,289	1,431	90.1
Ogden	675	1,177	57.3	1,201	1,770	67.9	2,438	2,854	85.4
Parma	412	859	48.0	806	1,339	60.2	1,887	2,260	83.5
Penfield	949	1,702	55.8	2,147	3,156	68.0	4,446	5,103	87.1
Perinton	1,489	2,671	55.7	3,436	4,827	71.2	6,221	6,993	89.0
Pittsford	724	1,337	54.2	1,415	2,182	64.8	3,521	3,877	90.8
Riga	192	365	52.6	347	520	66.7	730	892	81.8
Rush	104	176	59.1	227	319	71.2	527	601	87.7
Sweden	585	1,079	54.2	634	1,078	58.8	1,132	1,359	83.3
Webster	1,071	2,013	53.2	2,641	3,864	68.3	4,766	5,573	85.5
Wheatland	190	335	56.7	346	501	69.1	643	732	87.8
TOWNS	15,380	28,740	53.5	32,612	49,979	65.3	58,300	69,333	84.1
GRAND TOTAL	20,548	40,254	51.0	45,204	72,225	62.6	72,472	90,575	80.0

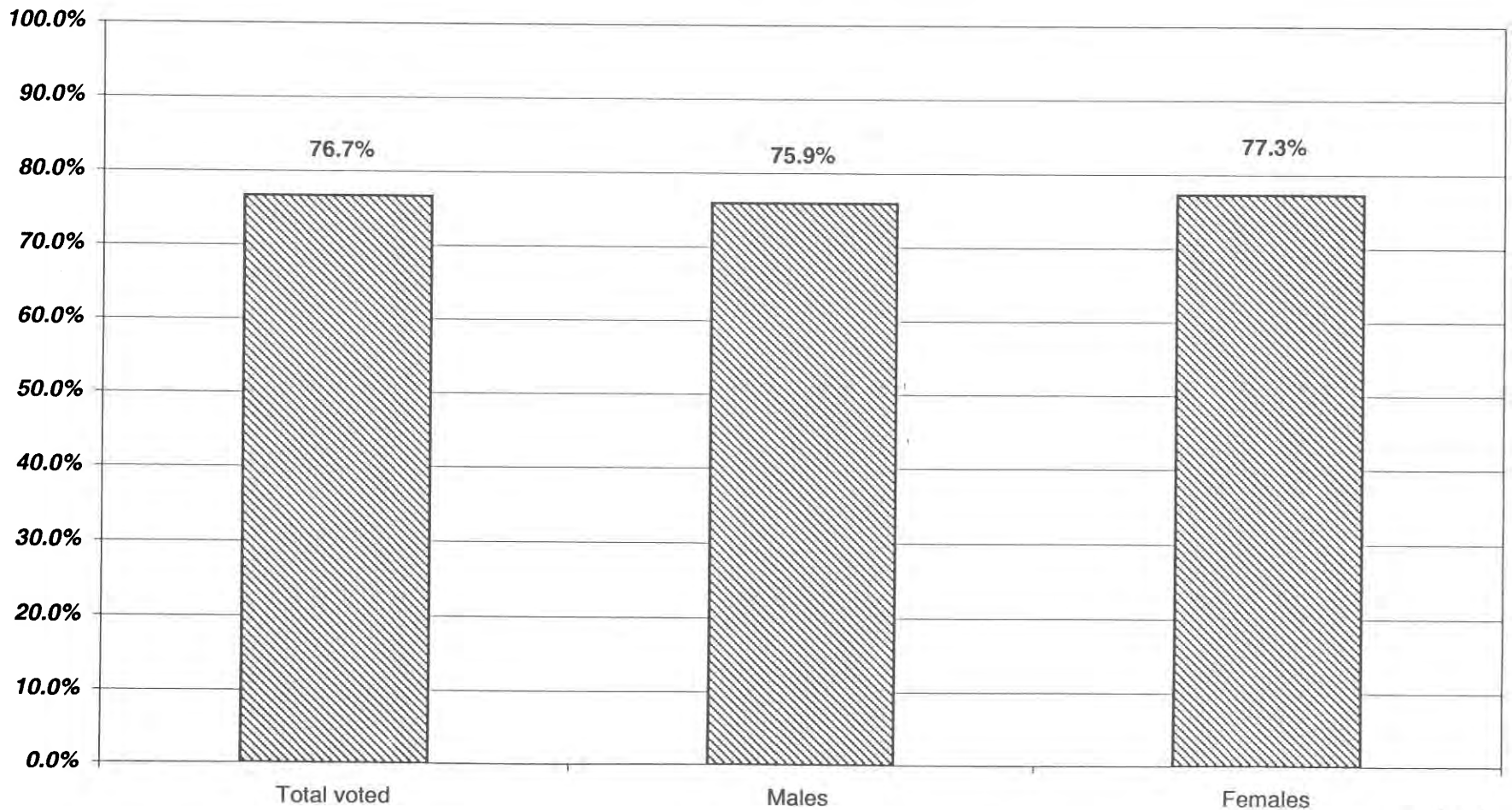
2000 GENERAL ELECTION
VOTER TURNOUT BY AGE GROUP
LT/LD SUMMARY

LEGISLATIVE DISTRICT OR TOWN	45-54			55-64			65+		
	VOTED	REGISTERED	TURNOUT	VOTED	REGISTERED	TURNOUT	VOTED	REGISTERED	TURNOUT
Leg. Dist. 06	878	1,070	82.1	514	613	83.8	916	1,182	77.5
Leg. Dist. 21	1,645	2,113	77.9	833	1,053	79.1	781	967	80.8
Leg. Dist. 22	918	1,489	61.7	631	955	66.1	522	801	65.2
Leg. Dist. 23	1,334	1,779	75.0	886	1,071	82.7	828	1,146	72.3
Leg. Dist. 24	2,223	2,527	88.0	1,201	1,379	87.1	1,818	2,274	79.9
Leg. Dist. 25	1,019	1,488	68.5	691	952	72.6	790	1,120	70.5
Leg. Dist. 26	1,224	1,657	73.9	669	854	78.3	705	932	75.6
Leg. Dist. 27	1,770	2,263	78.2	1,081	1,367	79.1	760	1,018	74.7
Leg. Dist. 28	886	1,333	66.5	547	777	70.4	776	1,113	69.7
Leg. Dist. 29	1,194	1,574	75.9	756	1,006	75.1	1,154	1,601	72.1
CITY	13,091	17,293	75.7	7,809	10,027	77.9	9,050	12,154	74.5
Brighton	4,123	4,501	91.6	2,463	2,675	92.1	4,195	4,959	84.6
Chili	2,967	3,340	88.8	1,842	2,057	89.5	2,058	2,438	84.4
Clarkson	588	675	87.1	357	400	89.3	430	498	86.3
East Rochester	552	684	80.7	321	388	82.7	471	588	80.1
Gates	2,487	2,981	83.4	2,122	2,474	85.8	3,205	3,965	80.8
Greece	10,053	11,689	86.0	6,128	6,881	89.1	8,733	10,615	82.3
Hamlin	983	1,129	87.1	552	616	89.6	413	502	82.3
Henrietta	3,225	3,718	86.7	2,300	2,583	89.0	2,493	2,968	84.0
Irondequoit	5,699	6,489	87.8	3,459	3,880	89.1	6,838	8,313	82.3
Mendon	1,259	1,358	92.7	719	775	92.8	596	696	85.6
Ogden	2,177	2,456	88.6	1,200	1,320	90.9	1,058	1,285	82.3
Parma	1,617	1,893	85.4	1,083	1,209	89.6	929	1,174	79.1
Penfield	4,476	4,979	89.9	2,712	2,995	90.6	3,074	3,602	85.3
Perinton	6,465	7,058	91.6	4,335	4,590	94.4	3,944	4,530	87.1
Pittsford	3,801	4,123	92.2	2,564	2,736	93.7	3,066	3,429	89.4
Riga	715	800	89.4	390	440	88.6	378	453	83.4
Rush	509	552	92.2	318	339	93.8	249	273	91.2
Sweden	1,234	1,415	87.2	681	747	91.2	676	829	81.5
Webster	4,566	5,052	90.4	2,928	3,182	92.0	3,234	3,771	85.8
Wheatland	583	658	88.6	372	401	92.8	449	533	84.2
TOWNS	58,079	65,550	88.6	36,846	40,688	90.6	46,489	55,421	83.9
GRAND TOTAL	71,170	82,843	85.9	44,655	50,715	88.1	55,539	67,575	82.2

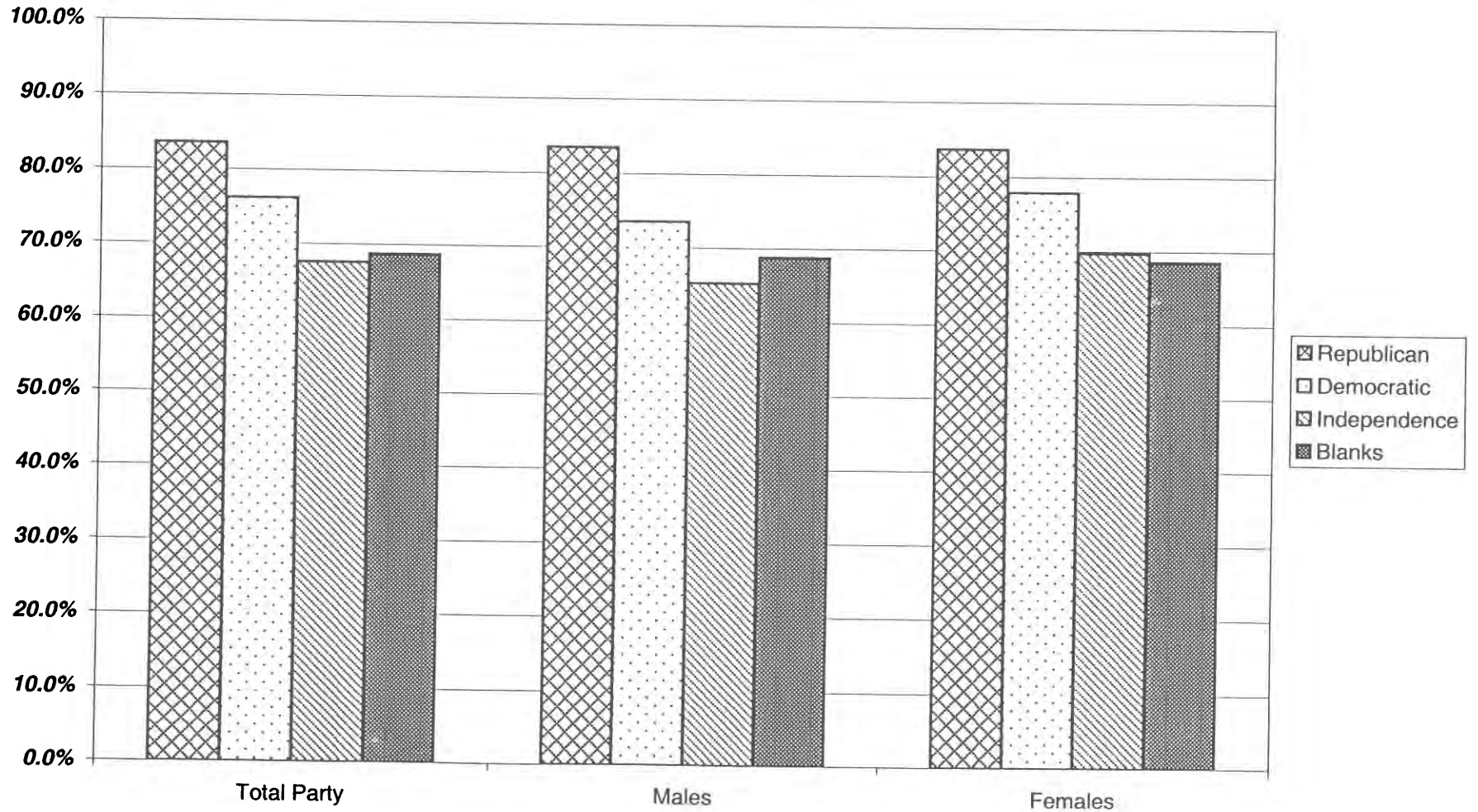
VOTER TURNOUT BY PARTY 2000 GENERAL ELECTION



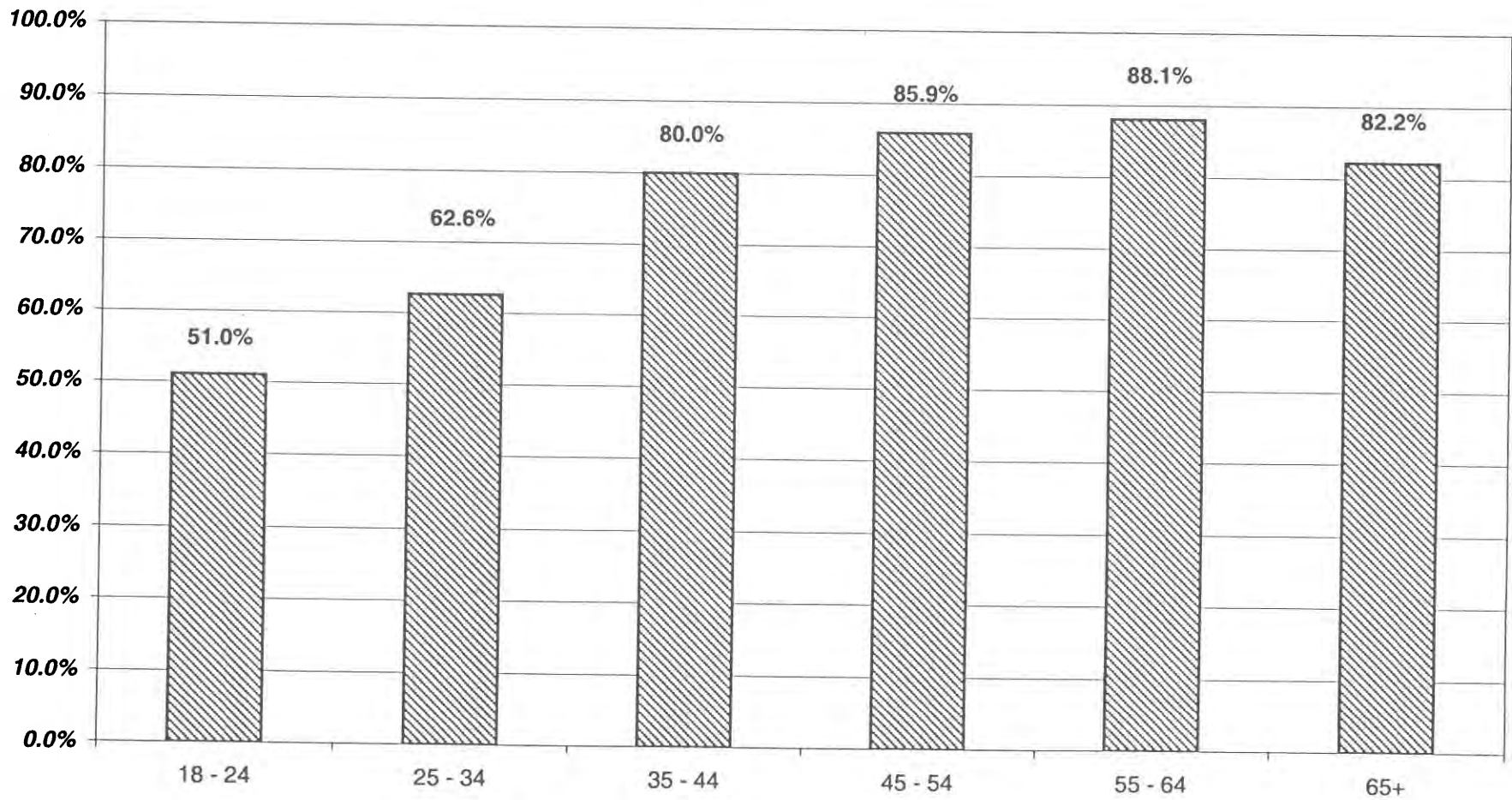
VOTER TURNOUT - TOTAL AND BY GENDER 2000 GENERAL ELECTION



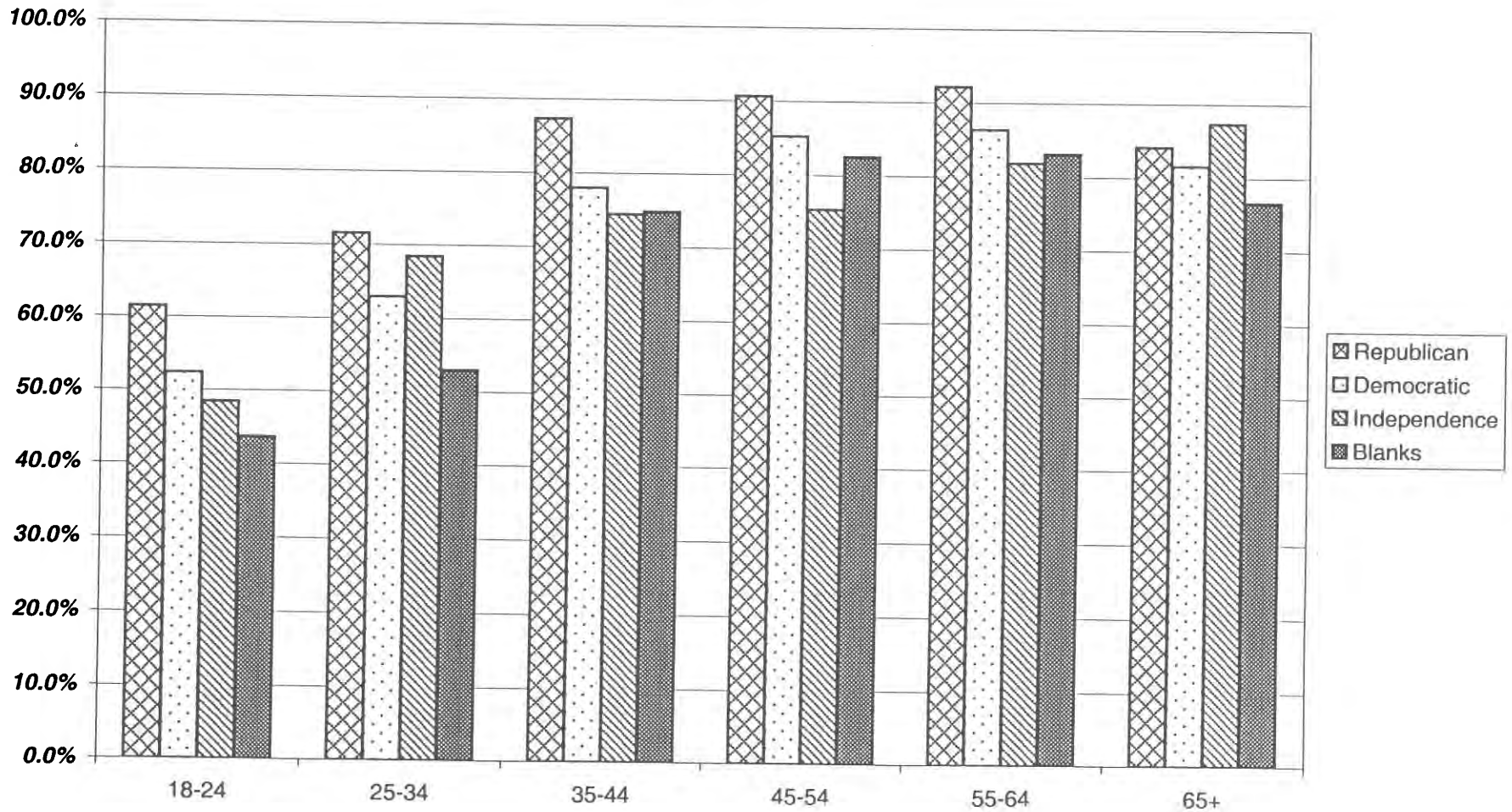
COMPARISON OF TOTAL AND GENDER TURNOUT 2000 GENERAL ELECTION



VOTER TURNOUT BY AGE GROUP 2000 GENERAL ELECTION



COMPARISON OF TURNOUT BY AGE GROUP 2000 GENERAL ELECTION



REPUBLICAN SUMMARY

2000 GENERAL ELECTION
VOTER TURNOUT BY GENDER

REPUBLICAN LT/LD SUMMARY

LEGISLATIVE DISTRICT OR TOWN	TOTAL REPUBLICANS			MALES			FEMALES		
	VOTED	REGISTERED	TURNOUT	VOTED	REGISTERED	TURNOUT	VOTED	REGISTERED	TURNOUT
Leg. Dist. 06	1,632	2,087	78.2	776	983	78.9	856	1,104	77.5
Leg. Dist. 21	1,842	2,370	77.7	921	1,166	79.0	921	1,204	76.5
Leg. Dist. 22	301	641	47.0	135	302	44.7	166	339	49.0
Leg. Dist. 23	1,335	1,881	71.0	766	1,037	73.9	569	844	67.4
Leg. Dist. 24	2,857	3,501	81.6	1,346	1,647	81.7	1,511	1,854	81.5
Leg. Dist. 25	555	898	61.8	264	445	59.3	291	453	64.2
Leg. Dist. 26	1,505	2,143	70.2	749	1,081	69.3	756	1,062	71.2
Leg. Dist. 27	993	1,356	73.2	468	652	71.8	525	704	74.6
Leg. Dist. 28	1,063	1,595	66.6	500	746	67.0	563	849	66.3
Leg. Dist. 29	1,326	1,906	69.6	616	889	69.3	710	1,017	69.8
CITY	13,409	18,378	73.0	6,541	8,948	73.1	6,868	9,430	72.8
Brighton	6,642	7,865	84.5	3,227	3,777	85.4	3,415	4,088	83.5
Chili	6,031	7,112	84.8	3,036	3,596	84.4	2,995	3,516	85.2
Clarkson	1,302	1,528	85.2	655	773	84.7	647	755	85.7
East Rochester	1,216	1,572	77.4	568	739	76.9	648	833	77.8
Gates	5,565	6,931	80.3	2,745	3,430	80.0	2,820	3,501	80.5
Greece	20,213	24,377	82.9	10,019	12,088	82.9	10,194	12,289	83.0
Hamlin	2,040	2,389	85.4	1,050	1,240	84.7	990	1,149	86.2
Henrietta	6,086	7,168	84.9	3,078	3,639	84.6	3,008	3,529	85.2
Irondequoit	11,023	13,134	83.9	5,306	6,335	83.8	5,717	6,799	84.1
Mendon	2,311	2,679	86.3	1,186	1,380	85.9	1,125	1,299	86.6
Ogden	4,208	4,898	85.9	2,147	2,498	85.9	2,061	2,400	85.9
Parma	3,225	3,833	84.1	1,673	1,993	83.9	1,552	1,840	84.3
Penfield	8,012	9,234	86.8	4,072	4,687	86.9	3,940	4,547	86.7
Perinton	11,782	13,296	88.6	5,968	6,771	88.1	5,814	6,525	89.1
Pittsford	7,349	8,235	89.2	3,753	4,256	88.2	3,596	3,979	90.4
Riga	1,482	1,743	85.0	724	847	85.5	758	896	84.6
Rush	906	1,006	90.1	476	537	88.6	430	469	91.7
Sweden	2,244	2,665	84.2	1,109	1,328	83.5	1,135	1,337	84.9
Webster	8,266	9,526	86.8	4,216	4,885	86.3	4,050	4,641	87.3
Wheatland	1,158	1,330	87.1	567	646	87.8	591	684	86.4
TOWNS	111,061	130,521	85.1	55,575	65,445	84.9	55,486	65,076	85.3
GRAND TOTAL	124,470	148,899	83.6	62,116	74,393	83.5	62,354	74,506	83.7

2000 GENERAL ELECTION
VOTER TURNOUT BY AGE GROUP

REPUBLICAN LT/LD SUMMARY

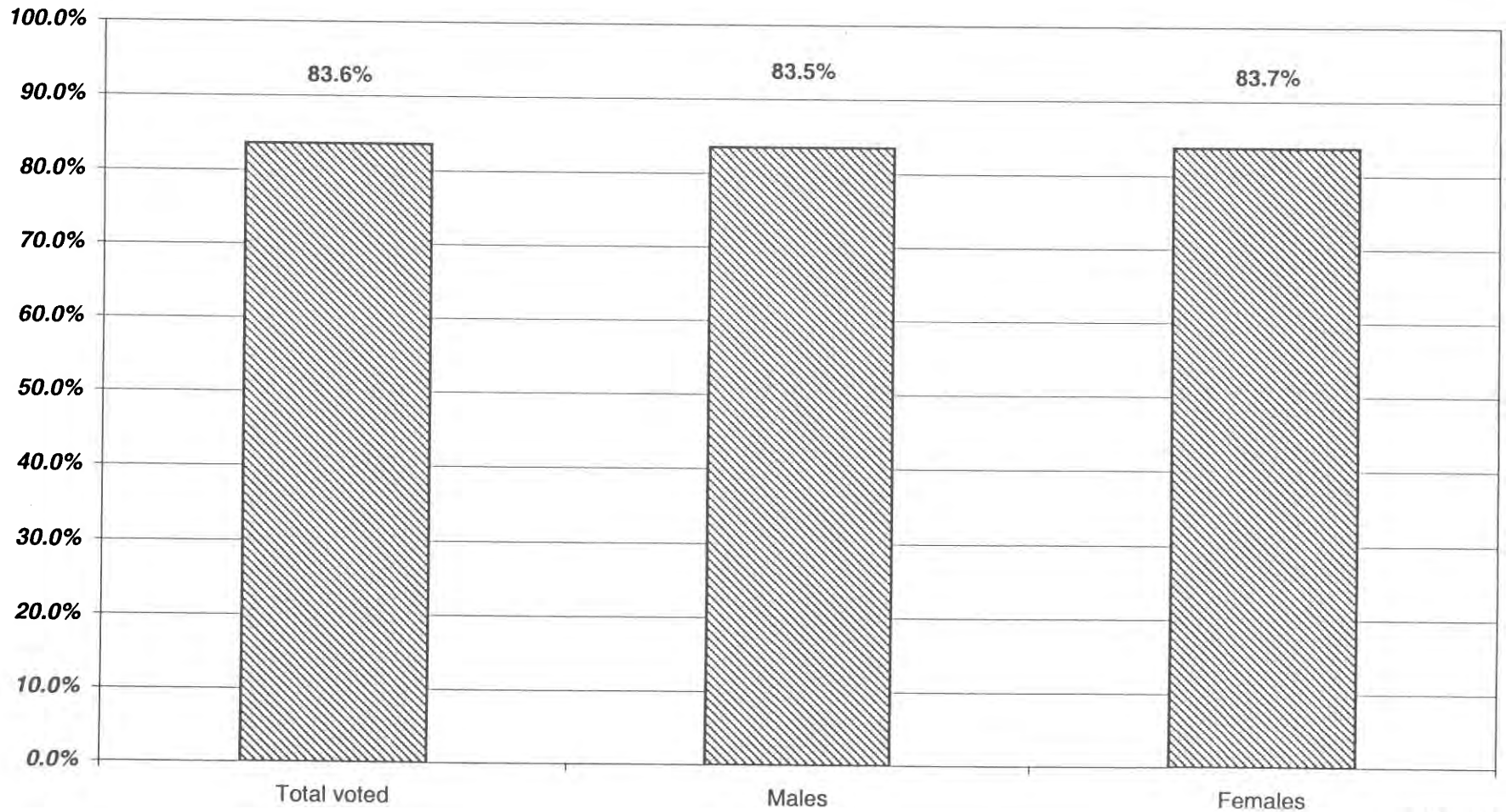
LEGISLATIVE DISTRICT OR TOWN	18-24			25-34			35-44		
	VOTED	REGISTERED	TURNOUT	VOTED	REGISTERED	TURNOUT	VOTED	REGISTERED	TURNOUT
Leg. Dist. 06	55	81	67.9	236	344	68.6	299	377	79.3
Leg. Dist. 21	97	157	61.8	355	502	70.7	367	443	82.8
Leg. Dist. 22	12	72	16.7	40	139	28.8	65	129	50.4
Leg. Dist. 23	137	219	62.6	386	594	65.0	225	303	74.3
Leg. Dist. 24	132	186	71.0	476	624	76.3	525	620	84.7
Leg. Dist. 25	47	94	50.0	90	181	49.7	88	139	63.3
Leg. Dist. 26	76	129	58.9	199	383	52.0	374	515	72.6
Leg. Dist. 27	54	110	49.1	140	215	65.1	210	266	78.9
Leg. Dist. 28	49	101	48.5	126	235	53.6	189	280	67.5
Leg. Dist. 29	40	88	45.5	164	272	60.3	204	304	67.1
CITY	699	1,237	56.5	2,212	3,489	63.4	2,546	3,376	75.4
Brighton	274	390	70.3	829	1,104	75.1	1,030	1,156	89.1
Chili	284	478	59.4	807	1,106	73.0	1,345	1,518	88.6
Clarkson	51	101	50.5	197	249	79.1	312	359	86.9
East Rochester	50	96	52.1	179	281	63.7	256	308	83.1
Gates	219	355	61.7	657	995	66.0	960	1,182	81.2
Greece	845	1,385	61.0	2,155	3,154	68.3	4,016	4,636	86.6
Hamlin	119	177	67.2	271	354	76.6	519	611	84.9
Henrietta	297	420	70.7	868	1,160	74.8	1,364	1,578	86.4
Irondequoit	320	531	60.3	1,250	1,626	76.9	1,859	2,151	86.4
Mendon	118	218	54.1	227	326	69.6	601	655	91.8
Ogden	252	370	68.1	515	699	73.7	1,082	1,194	90.6
Parma	129	227	56.8	339	453	74.8	818	909	90.0
Penfield	288	425	67.8	855	1,172	73.0	1,909	2,085	91.6
Perinton	436	725	60.1	1,478	1,871	79.0	2,724	2,960	92.0
Pittsford	235	407	57.7	618	848	72.9	1,586	1,687	94.0
Riga	77	118	65.3	175	234	74.8	350	414	84.5
Rush	29	46	63.0	90	117	76.9	201	225	89.3
Sweden	165	249	66.3	264	387	68.2	491	535	91.8
Webster	329	539	61.0	1,029	1,373	74.9	1,948	2,153	90.5
Wheatland	63	99	63.6	142	178	79.8	247	272	90.8
TOWNS	4,580	7,356	62.3	12,945	17,687	73.2	23,618	26,588	88.8
GRAND TOTAL	5,279	8,593	61.4	15,157	21,176	71.6	26,164	29,964	87.3

2000 GENERAL ELECTION
VOTER TURNOUT BY AGE GROUP

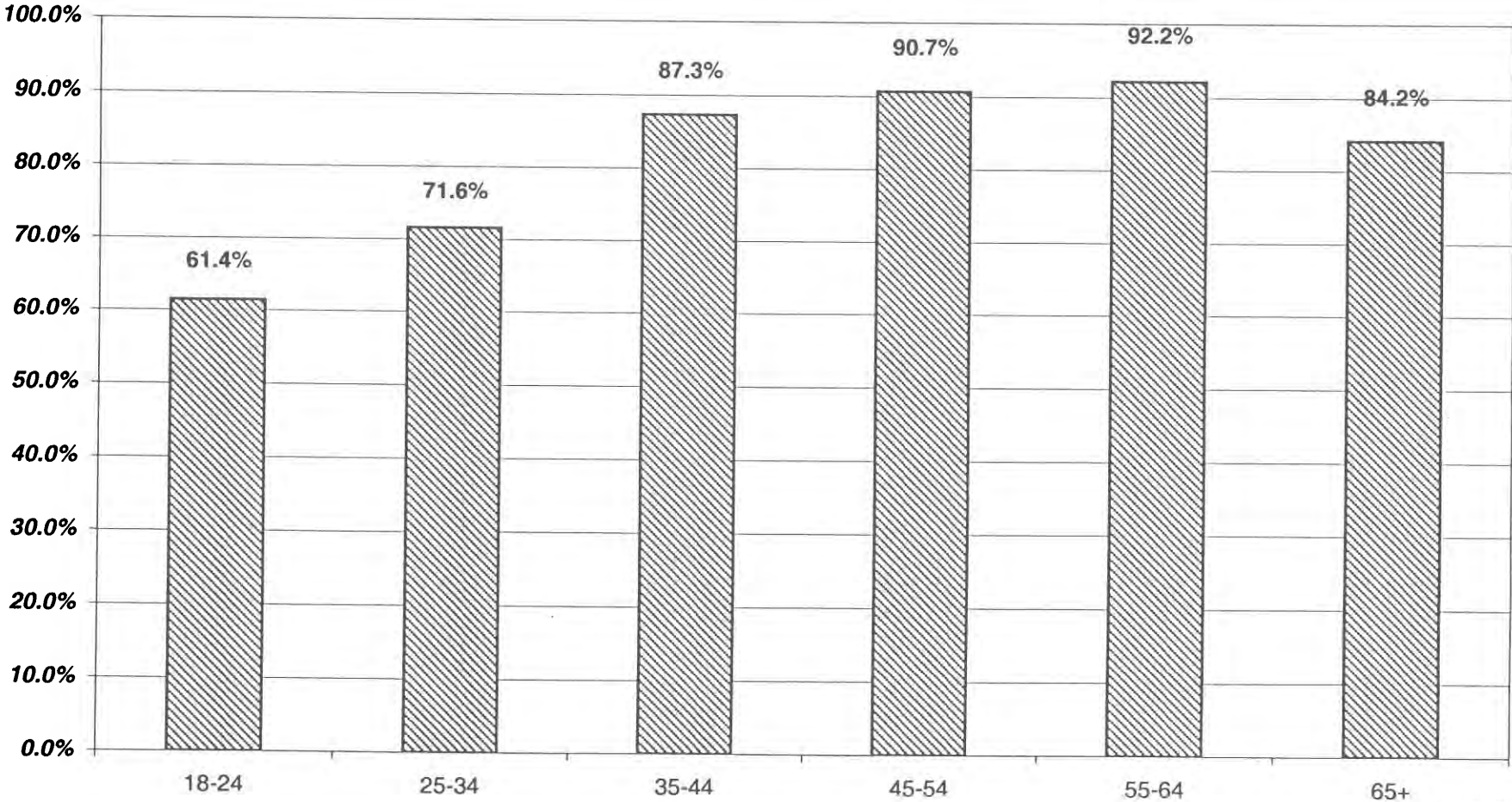
REPUBLICAN LT/LD SUMMARY

LEGISLATIVE DISTRICT OR TOWN	45-54			55-64			65+		
	VOTED	REGISTERED	TURNOUT	VOTED	REGISTERED	TURNOUT	VOTED	REGISTERED	TURNOUT
Leg. Dist. 06	252	292	86.3	189	224	84.4	423	535	79.1
Leg. Dist. 21	285	332	85.8	179	208	86.1	249	306	81.4
Leg. Dist. 22	54	91	59.3	54	78	69.2	56	93	60.2
Leg. Dist. 23	182	229	79.5	155	177	87.6	199	281	70.8
Leg. Dist. 24	420	474	88.6	300	336	89.3	731	915	79.9
Leg. Dist. 25	94	138	68.1	55	79	69.6	131	191	68.6
Leg. Dist. 26	268	339	79.1	192	244	78.7	298	399	74.7
Leg. Dist. 27	176	219	80.4	115	142	81.0	181	235	77.0
Leg. Dist. 28	193	257	75.1	128	167	76.6	249	363	68.6
Leg. Dist. 29	201	255	78.8	148	193	76.7	373	510	73.1
CITY	2,125	2,626	80.9	1,515	1,848	82.0	2,890	3,828	75.5
Brighton	1,097	1,185	92.6	907	995	91.2	1,955	2,331	83.9
Chili	1,129	1,200	94.1	878	955	91.9	1,192	1,376	86.6
Clarkson	252	277	91.0	199	218	91.3	286	317	90.2
East Rochester	191	229	83.4	143	178	80.3	246	301	81.7
Gates	890	1,036	85.9	977	1,088	89.8	1,693	2,056	82.3
Greece	3,695	4,095	90.2	2,971	3,224	92.2	5,124	6,125	83.7
Hamlin	495	534	92.7	329	355	92.7	279	322	86.6
Henrietta	1,108	1,246	88.9	1,013	1,097	92.3	1,337	1,542	86.7
Irondequoit	1,719	1,879	91.5	1,449	1,569	92.4	3,394	4,065	83.5
Mendon	526	558	94.3	408	428	95.3	396	452	87.6
Ogden	908	988	91.9	643	691	93.1	647	773	83.7
Parma	686	770	89.1	619	674	91.8	577	722	79.9
Penfield	1,591	1,724	92.3	1,270	1,356	93.7	1,660	1,937	85.7
Perinton	2,508	2,679	93.6	2,200	2,272	96.8	2,325	2,638	88.1
Pittsford	1,515	1,610	94.1	1,284	1,334	96.3	1,854	2,039	90.9
Riga	350	362	96.7	251	278	90.3	249	291	85.6
Rush	177	183	96.7	163	170	95.9	162	172	94.2
Sweden	515	570	90.4	332	353	94.1	412	495	83.2
Webster	1,607	1,716	93.6	1,293	1,369	94.4	1,692	1,928	87.8
Wheatland	235	249	94.4	175	182	96.2	271	320	84.7
TOWNS	21,194	23,090	91.8	17,504	18,786	93.2	25,751	30,202	85.3
GRAND TOTAL	23,319	25,716	90.7	19,019	20,634	92.2	28,641	34,030	84.2

REPUBLICAN TURNOUT - TOTAL AND GENDER 2000 GENERAL ELECTION



REPUBLICAN TURNOUT BY AGE GROUP 2000 GENERAL ELECTION



DEMOCRATIC SUMMARY

2000 GENERAL ELECTION
VOTER TURNOUT BY GENDER

DEMOCRATIC LT/LD SUMMARY

LEGISLATIVE DISTRICT OR TOWN	TOTAL DEMOCRATS			MALES			FEMALES		
	VOTED	REGISTERED	TURNOUT	VOTED	REGISTERED	TURNOUT	VOTED	REGISTERED	TURNOUT
Leg. Dist. 06	1,692	2,193	77.2	610	799	76.3	1,082	1,394	77.6
Leg. Dist. 21	4,322	6,070	71.2	1,627	2,408	67.6	2,695	3,662	73.6
Leg. Dist. 22	3,448	6,430	53.6	1,207	2,653	45.5	2,241	3,777	59.3
Leg. Dist. 23	4,297	6,219	69.1	1,763	2,675	65.9	2,534	3,544	71.5
Leg. Dist. 24	5,198	6,262	83.0	2,047	2,509	81.6	3,151	3,753	84.0
Leg. Dist. 25	3,884	6,147	63.2	1,421	2,487	57.1	2,463	3,660	67.3
Leg. Dist. 26	2,819	4,231	66.6	1,095	1,681	65.1	1,724	2,550	67.6
Leg. Dist. 27	5,557	7,847	70.8	2,005	3,103	64.6	3,552	4,744	74.9
Leg. Dist. 28	2,394	4,024	59.5	906	1,644	55.1	1,488	2,380	62.5
Leg. Dist. 29	3,576	5,457	65.5	1,289	2,100	61.4	2,287	3,357	68.1
CITY	37,187	54,880	67.8	13,970	22,059	63.3	23,217	32,821	70.7
Brighton	7,421	8,595	86.3	2,848	3,345	85.1	4,573	5,250	87.1
Chili	3,840	4,879	78.7	1,492	1,927	77.4	2,348	2,952	79.5
Clarkson	673	845	79.6	263	320	82.2	410	525	78.1
East Rochester	882	1,158	76.2	317	420	75.5	565	738	76.6
Gates	4,296	5,671	75.8	1,654	2,253	73.4	2,642	3,418	77.3
Greece	12,400	16,075	77.1	4,714	6,213	75.9	7,686	9,862	77.9
Hamlin	831	1,098	75.7	338	456	74.1	493	642	76.8
Henrietta	4,875	6,029	80.9	1,928	2,437	79.1	2,947	3,592	82.0
Irondequoit	9,275	11,362	81.6	3,466	4,305	80.5	5,809	7,057	82.3
Mendon	1,118	1,351	82.8	430	525	81.9	688	826	83.3
Ogden	2,161	2,656	81.4	829	1,041	79.6	1,332	1,615	82.5
Parma	1,564	2,034	76.9	608	813	74.8	956	1,221	78.3
Penfield	5,124	6,122	83.7	1,952	2,374	82.2	3,172	3,748	84.6
Perinton	7,041	8,253	85.3	2,651	3,150	84.2	4,390	5,103	86.0
Pittsford	4,050	4,683	86.5	1,531	1,805	84.8	2,519	2,878	87.5
Riga	594	770	77.1	226	308	73.4	368	462	79.7
Rush	533	617	86.4	210	244	86.1	323	373	86.6
Sweden	1,488	1,904	78.2	598	755	79.2	890	1,149	77.5
Webster	5,605	6,749	83.0	2,165	2,660	81.4	3,440	4,089	84.1
Wheatland	744	904	82.3	311	366	85.0	433	538	80.5
TOWNS	74,515	91,755	81.2	28,531	35,717	79.9	45,984	56,038	82.1
GRAND TOTAL	111,702	146,635	76.2	42,501	57,776	73.6	69,201	88,859	77.9

2000 GENERAL ELECTION
VOTER TURNOUT BY AGE GROUP

DEMOCRATIC LT/LD SUMMARY

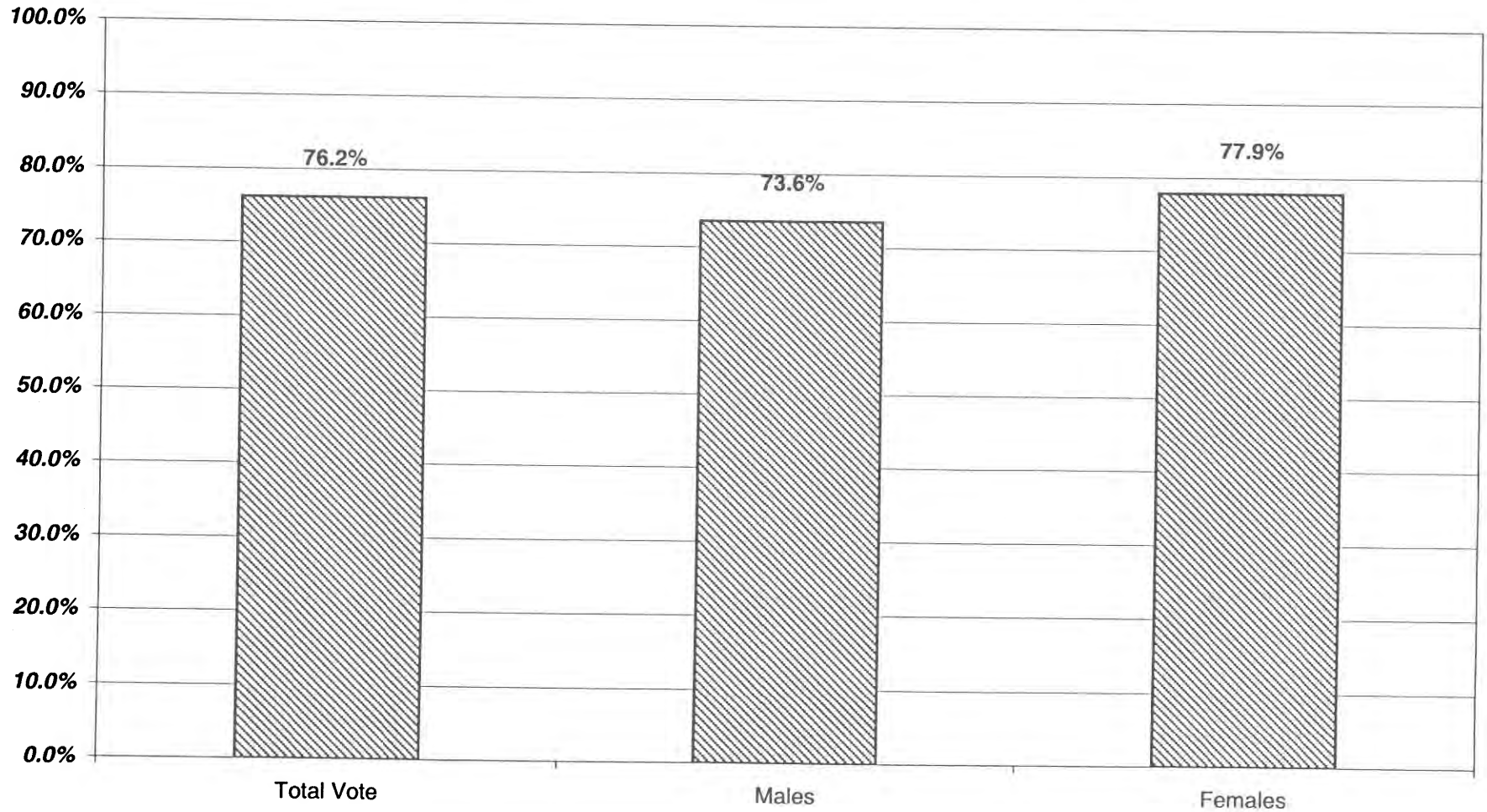
LEGISLATIVE DISTRICT OR TOWN	18-24			25-34			35-44		
	VOTED	REGISTERED	TURNOUT	VOTED	REGISTERED	TURNOUT	VOTED	REGISTERED	TURNOUT
Leg. Dist. 06	92	143	64.3	229	368	62.2	367	467	78.6
Leg. Dist. 21	300	595	50.4	932	1,414	65.9	989	1,386	71.4
Leg. Dist. 22	271	899	30.1	569	1,335	42.6	795	1,473	54.0
Leg. Dist. 23	423	777	54.4	987	1,573	62.7	881	1,297	67.9
Leg. Dist. 24	296	478	61.9	976	1,294	75.4	1,138	1,329	85.6
Leg. Dist. 25	321	698	46.0	712	1,284	55.5	835	1,347	62.0
Leg. Dist. 26	212	508	41.7	577	954	60.5	661	991	66.7
Leg. Dist. 27	403	793	50.8	1,019	1,633	62.4	1,354	1,919	70.6
Leg. Dist. 28	150	404	37.1	390	788	49.5	498	857	58.1
Leg. Dist. 29	246	590	41.7	531	1,049	50.6	723	1,090	66.3
CITY	2,714	5,885	46.1	6,922	11,692	59.2	8,241	12,156	67.8
Brighton	469	733	64.0	944	1,303	72.4	1,444	1,611	89.6
Chili	278	514	54.1	495	782	63.3	830	999	83.1
Clarkson	40	78	51.3	92	135	68.1	154	180	85.6
East Rochester	74	112	66.1	142	212	67.0	185	237	78.1
Gates	219	429	51.0	486	839	57.9	807	1,040	77.6
Greece	814	1,513	53.8	1,400	2,438	57.4	2,587	3,253	79.5
Hamlin	77	122	63.1	97	165	58.8	226	289	78.2
Henrietta	366	577	63.4	694	1,031	67.3	1,074	1,303	82.4
Irondequoit	363	663	54.8	1,089	1,516	71.8	1,741	2,071	84.1
Mendon	72	159	45.3	135	207	65.2	290	310	93.5
Ogden	171	294	58.2	254	374	67.9	541	638	84.8
Parma	92	187	49.2	188	288	65.3	408	497	82.1
Penfield	250	449	55.7	590	841	70.2	1,128	1,278	88.3
Perinton	485	799	60.7	884	1,207	73.2	1,615	1,806	89.4
Pittsford	208	351	59.3	364	563	64.7	952	1,035	92.0
Riga	46	89	51.7	65	105	61.9	161	194	83.0
Rush	22	42	52.4	63	85	74.1	131	151	86.8
Sweden	211	343	61.5	176	277	63.5	291	352	82.7
Webster	285	531	53.7	706	1,000	70.6	1,165	1,356	85.9
Wheatland	51	89	57.3	82	137	59.9	165	181	91.2
TOWNS	4,593	8,074	56.9	8,946	13,505	66.2	15,895	18,781	84.6
GRAND TOTAL	7,307	13,959	52.3	15,868	25,197	63.0	24,136	30,937	78.0

2000 GENERAL ELECTION
VOTER TURNOUT BY AGE GROUP

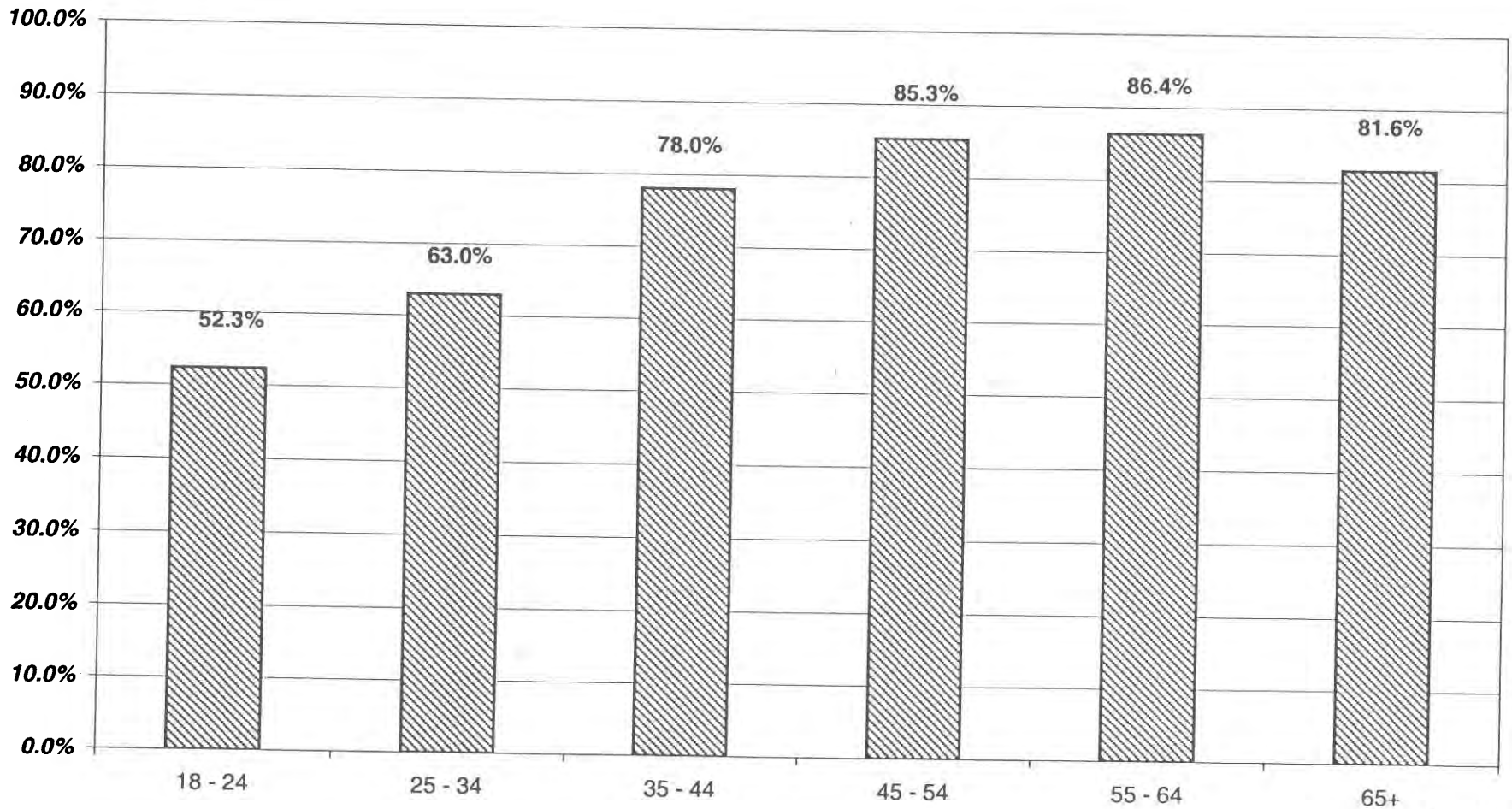
DEMOCRATIC LT/LD SUMMARY

LEGISLATIVE DISTRICT OR TOWN	45-54			55-64			65+		
	VOTED	REGISTERED	TURNOUT	VOTED	REGISTERED	TURNOUT	VOTED	REGISTERED	TURNOUT
Leg. Dist. 06	347	395	87.8	221	258	85.7	357	462	77.3
Leg. Dist. 21	965	1,230	78.5	516	659	78.3	410	510	80.4
Leg. Dist. 22	775	1,190	65.1	534	789	67.7	434	641	67.7
Leg. Dist. 23	885	1,150	77.0	565	680	83.1	493	663	74.4
Leg. Dist. 24	1,207	1,320	91.4	639	707	90.4	763	918	83.1
Leg. Dist. 25	763	1,104	69.1	565	760	74.3	588	818	71.9
Leg. Dist. 26	644	859	75.0	365	447	81.7	306	391	78.3
Leg. Dist. 27	1,287	1,619	79.5	860	1,053	81.7	510	672	75.9
Leg. Dist. 28	509	753	67.6	332	484	68.6	429	603	71.1
Leg. Dist. 29	751	974	77.1	506	648	78.1	641	871	73.6
CITY	8,133	10,594	76.8	5,103	6,485	78.7	4,931	6,549	75.3
Brighton	1,878	1,995	94.1	1,015	1,068	95.0	1,491	1,678	88.9
Chili	914	1,035	88.3	598	669	89.4	553	671	82.4
Clarkson	177	202	87.6	103	115	89.6	102	126	81.0
East Rochester	168	219	76.7	96	105	91.4	145	183	79.2
Gates	896	1,049	85.4	729	859	84.9	1,077	1,347	80.0
Greece	3,025	3,473	87.1	1,784	2,020	88.3	2,334	2,826	82.6
Hamlin	208	247	84.2	133	153	86.9	86	115	74.8
Henrietta	1,104	1,225	90.1	801	891	89.9	790	947	83.4
Irondequoit	2,065	2,348	87.9	1,175	1,314	89.4	2,389	2,886	82.8
Mendon	336	350	96.0	158	171	92.4	125	151	82.8
Ogden	577	632	91.3	278	314	88.5	278	335	83.0
Parma	385	455	84.6	249	290	85.9	225	291	77.3
Penfield	1,383	1,515	91.3	763	849	89.9	857	1,000	85.7
Perinton	1,939	2,107	92.0	1,140	1,203	94.8	935	1,075	87.0
Pittsford	1,177	1,257	93.6	660	708	93.2	636	699	91.0
Riga	162	186	87.1	69	78	88.5	82	104	78.8
Rush	149	154	96.8	82	90	91.1	53	59	89.8
Sweden	370	413	89.6	230	258	89.1	189	230	82.2
Webster	1,360	1,511	90.0	910	982	92.7	975	1,119	87.1
Wheatland	177	199	88.9	134	145	92.4	128	144	88.9
TOWNS	18,450	20,572	89.7	11,107	12,282	90.4	13,450	15,986	84.1
GRAND TOTAL	26,583	31,166	85.3	16,210	18,767	86.4	18,381	22,535	81.6

DEMOCRATIC TURNOUT - TOTAL AND GENDER 2000 GENERAL ELECTION



DEMOCRATIC TURNOUT BY AGE GROUP 2000 GENERAL ELECTION



INDEPENDENCE SUMMARY

2000 GENERAL ELECTION
VOTER TURNOUT BY GENDER

INDEPENDENCE LT/LD SUMMARY

LEGISLATIVE DISTRICT OR TOWN	TOTAL INDEPENDENCE			MALES			FEMALES		
	VOTED	REGISTERED	TURNOUT	VOTED	REGISTERED	TURNOUT	VOTED	REGISTERED	TURNOUT
Leg. Dist. 06	97	165	58.8	44	79	55.7	53	86	61.6
Leg. Dist. 21	175	288	60.8	84	151	55.6	91	137	66.4
Leg. Dist. 22	56	130	43.1	23	57	40.4	33	73	45.2
Leg. Dist. 23	221	355	62.3	110	190	57.9	111	165	67.3
Leg. Dist. 24	232	322	72.0	119	171	69.6	113	151	74.8
Leg. Dist. 25	73	154	47.4	33	76	43.4	40	78	51.3
Leg. Dist. 26	141	240	58.8	63	112	56.3	78	128	60.9
Leg. Dist. 27	116	189	61.4	66	107	61.7	50	82	61.0
Leg. Dist. 28	83	163	50.9	41	81	50.6	42	82	51.2
Leg. Dist. 29	82	181	45.3	42	100	42.0	40	81	49.4
CITY	1,276	2,187	58.3	625	1,124	55.6	651	1,063	61.2
Brighton	363	473	76.7	160	221	72.4	203	252	80.6
Chili	237	332	71.4	108	155	69.7	129	177	72.9
Clarkson	63	94	67.0	29	43	67.4	34	51	66.7
East Rochester	65	98	66.3	29	50	58.0	36	48	75.0
Gates	212	304	69.7	112	162	69.1	100	142	70.4
Greece	803	1,207	66.5	371	578	64.2	432	629	68.7
Hamlin	82	134	61.2	43	65	66.2	39	69	56.5
Henrietta	311	442	70.4	137	209	65.6	174	233	74.7
Irondequoit	473	701	67.5	217	337	64.4	256	364	70.3
Mendon	79	111	71.2	39	50	78.0	40	61	65.6
Ogden	161	213	75.6	85	109	78.0	76	104	73.1
Parma	111	167	66.5	55	88	62.5	56	79	70.9
Penfield	343	448	76.6	163	218	74.8	180	230	78.3
Perinton	545	742	73.5	242	332	72.9	303	410	73.9
Pittsford	253	342	74.0	103	148	69.6	150	194	77.3
Riga	45	75	60.0	18	35	51.4	27	40	67.5
Rush	33	41	80.5	18	21	85.7	15	20	75.0
Sweden	100	177	56.5	54	93	58.1	46	84	54.8
Webster	382	496	77.0	178	227	78.4	204	269	75.8
Wheatland	53	82	64.6	26	43	60.5	27	39	69.2
TOWNS	4,714	6,679	70.6	2,187	3,184	68.7	2,527	3,495	72.3
GRAND TOTAL	5,990	8,866	67.6	2,812	4,308	65.3	3,178	4,558	69.7

2000 GENERAL ELECTION
VOTER TURNOUT BY AGE GROUP

INDEPENDENCE LT/LD SUMMARY

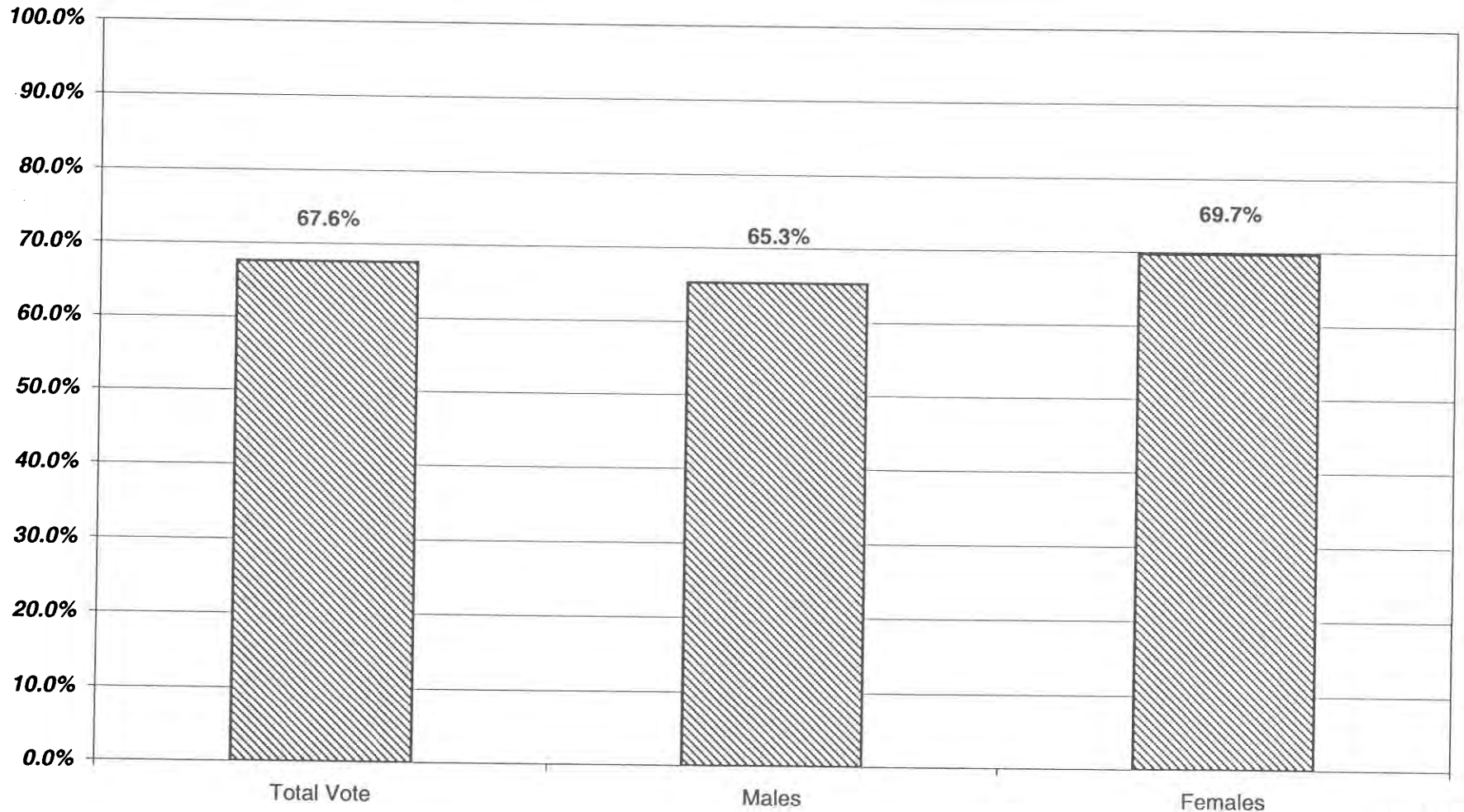
LEGISLATIVE DISTRICT OR TOWN	18-24			25-34			35-44		
	VOTED	REGISTERED	TURNOUT	VOTED	REGISTERED	TURNOUT	VOTED	REGISTERED	TURNOUT
Leg. Dist. 06	12	30	40.0	29	46	63.0	31	44	70.5
Leg. Dist. 21	34	68	50.0	73	112	65.2	34	60	56.7
Leg. Dist. 22	16	48	33.3	14	36	38.9	14	25	56.0
Leg. Dist. 23	44	79	55.7	94	139	67.6	33	71	46.5
Leg. Dist. 24	32	65	49.2	97	128	75.8	60	72	83.3
Leg. Dist. 25	14	44	31.8	27	48	56.3	18	36	50.0
Leg. Dist. 26	28	54	51.9	39	69	56.5	47	71	66.2
Leg. Dist. 27	25	54	46.3	38	60	63.3	28	39	71.8
Leg. Dist. 28	18	41	43.9	16	41	39.0	23	49	46.9
Leg. Dist. 29	18	49	36.7	18	46	39.1	20	47	42.6
CITY	241	532	45.3	445	725	61.4	308	514	59.9
Brighton	63	110	57.3	115	142	81.0	86	105	81.9
Chili	44	83	53.0	67	97	69.1	54	64	84.4
Clarkson	14	24	58.3	15	22	68.2	21	31	67.7
East Rochester	11	21	52.4	20	27	74.1	22	30	73.3
Gates	25	51	49.0	69	102	67.6	59	77	76.6
Greece	155	335	46.3	199	300	66.3	224	287	78.0
Hamlin	15	33	45.5	18	34	52.9	24	40	60.0
Henrietta	57	114	50.0	89	126	70.6	81	103	78.6
Irondequoit	67	141	47.5	134	197	68.0	129	180	71.7
Mendon	8	28	28.6	15	21	71.4	30	31	96.8
Ogden	39	57	68.4	50	68	73.5	43	53	81.1
Parma	19	46	41.3	28	40	70.0	41	50	82.0
Penfield	51	99	51.5	73	98	74.5	99	111	89.2
Perinton	91	178	51.1	157	207	75.8	138	174	79.3
Pittsford	24	68	35.3	50	66	75.8	74	86	86.0
Riga	14	27	51.9	12	22	54.5	9	13	69.2
Rush	6	9	66.7	8	11	72.7	10	11	90.9
Sweden	33	85	38.8	23	35	65.7	22	28	78.6
Webster	59	107	55.1	108	139	77.7	108	135	80.0
Wheatland	18	29	62.1	15	20	75.0	14	20	70.0
TOWNS	813	1,645	49.4	1,265	1,774	71.3	1,288	1,629	79.1
GRAND TOTAL	1,054	2,177	48.4	1,710	2,499	68.4	1,596	2,143	74.5

2000 GENERAL ELECTION
VOTER TURNOUT BY AGE GROUP

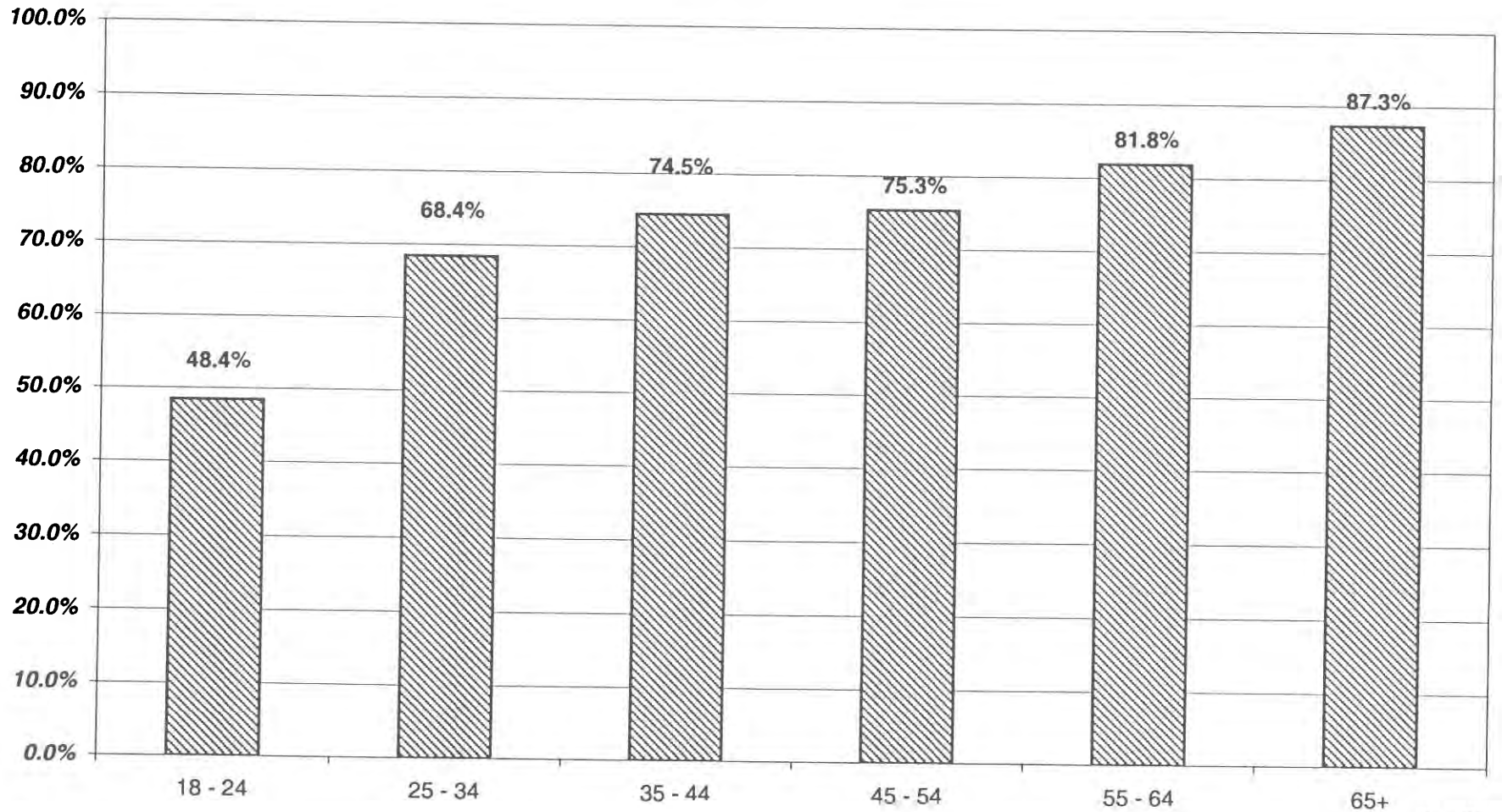
INDEPENDENCE LT/LD SUMMARY

LEGISLATIVE DISTRICT OR TOWN	45-54			55-64			65+		
	VOTED	REGISTERED	TURNOUT	VOTED	REGISTERED	TURNOUT	VOTED	REGISTERED	TURNOUT
Leg. Dist. 06	10	23	43.5	7	10	70.0	8	12	66.7
Leg. Dist. 21	23	31	74.2	9	12	75.0	2	5	40.0
Leg. Dist. 22	7	11	63.6	3	8	37.5	2	2	100.0
Leg. Dist. 23	25	37	67.6	16	17	94.1	9	12	75.0
Leg. Dist. 24	18	31	58.1	17	16	106.3	6	8	75.0
Leg. Dist. 25	8	18	44.4	2	2	100.0	4	6	66.7
Leg. Dist. 26	22	35	62.9	3	7	42.9	2	4	50.0
Leg. Dist. 27	17	27	63.0	4	5	80.0	4	4	100.0
Leg. Dist. 28	16	21	76.2	5	5	100.0	5	6	83.3
Leg. Dist. 29	14	22	63.6	3	6	50.0	9	11	81.8
CITY	160	256	62.5	69	88	78.4	51	70	72.9
Brighton	49	56	87.5	15	19	78.9	33	39	84.6
Chili	31	40	77.5	19	23	82.6	22	25	88.0
Clarkson	9	13	69.2	4	3	133.3	0	1	0.0
East Rochester	4	9	44.4	5	6	83.3	3	5	60.0
Gates	26	36	72.2	12	18	66.7	21	20	105.0
Greece	115	152	75.7	46	61	75.4	64	72	88.9
Hamlin	14	18	77.8	8	7	114.3	3	2	150.0
Henrietta	42	54	77.8	23	24	95.8	19	21	90.5
Irondequoit	68	91	74.7	24	30	80.0	51	62	82.3
Mendon	15	17	88.2	5	9	55.6	6	5	120.0
Ogden	19	25	76.0	8	9	88.9	2	1	200.0
Parma	14	19	73.7	2	5	40.0	6	6	100.0
Penfield	55	69	79.7	30	37	81.1	35	34	102.9
Perinton	81	98	82.7	42	49	85.7	36	36	100.0
Pittsford	48	57	84.2	25	31	80.6	32	34	94.1
Riga	7	8	87.5	3	4	75.0	0	1	0.0
Rush	5	7	71.4	4	3	133.3	0	0	0.0
Sweden	15	19	78.9	3	4	75.0	4	6	66.7
Webster	52	56	92.9	31	29	106.9	24	30	80.0
Wheatland	4	6	66.7	0	3	0.0	2	4	50.0
TOWNS	673	850	79.2	309	374	82.6	363	404	89.9
GRAND TOTAL	833	1,106	75.3	378	462	81.8	414	474	87.3

INDEPENDENCE TURNOUT - TOTAL AND GENDER 2000 GENERAL ELECTION



INDEPENDENCE TURNOUT BY AGE GROUP 2000 GENERAL ELECTION



CONSERVATIVE SUMMARY

2000 GENERAL ELECTION
VOTER TURNOUT BY GENDER

CONSERVATIVE LT/LD SUMMARY

LEGISLATIVE DISTRICT OR TOWN	TOTAL CONSERVATIVE			MALES			FEMALES		
	VOTED	REGISTERED	TURNOUT	VOTED	REGISTERED	TURNOUT	VOTED	REGISTERED	TURNOUT
Leg. Dist. 06	134	180	74.4	66	96	68.8	68	84	81.0
Leg. Dist. 21	103	157	65.6	58	91	63.7	45	66	68.2
Leg. Dist. 22	19	41	46.3	12	25	48.0	7	16	43.8
Leg. Dist. 23	61	105	58.1	31	60	51.7	30	45	66.7
Leg. Dist. 24	148	186	79.6	92	103	89.3	56	83	67.5
Leg. Dist. 25	36	59	61.0	18	34	52.9	18	25	72.0
Leg. Dist. 26	130	196	66.3	68	109	62.4	62	87	71.3
Leg. Dist. 27	58	90	64.4	32	54	59.3	26	36	72.2
Leg. Dist. 28	92	145	63.4	54	79	68.4	38	66	57.6
Leg. Dist. 29	72	114	63.2	50	78	64.1	22	36	61.1
CITY	853	1,273	67.0	481	729	66.0	372	544	68.4
Brighton	189	247	76.5	114	147	77.6	75	100	75.0
Chili	350	445	78.7	210	263	79.8	140	182	76.9
Clarkson	72	95	75.8	43	60	71.7	29	35	82.9
East Rochester	65	89	73.0	36	48	75.0	29	41	70.7
Gates	305	411	74.2	163	221	73.8	142	190	74.7
Greece	1,279	1,683	76.0	685	917	74.7	594	766	77.5
Hamlin	118	153	77.1	68	82	82.9	50	71	70.4
Henrietta	425	539	78.8	240	304	78.9	185	235	78.7
Irondequoit	570	730	78.1	334	422	79.1	236	308	76.6
Mendon	81	103	78.6	49	64	76.6	32	39	82.1
Ogden	305	375	81.3	154	194	79.4	151	181	83.4
Parma	199	253	78.7	118	144	81.9	81	109	74.3
Penfield	332	406	81.8	195	236	82.6	137	170	80.6
Perinton	415	516	80.4	247	310	79.7	168	206	81.6
Pittsford	171	198	86.4	107	120	89.2	64	78	82.1
Riga	68	86	79.1	42	52	80.8	26	34	76.5
Rush	44	59	74.6	25	35	71.4	19	24	79.2
Sweden	95	140	67.9	57	86	66.3	38	54	70.4
Webster	455	555	82.0	268	326	82.2	187	229	81.7
Wheatland	67	86	77.9	43	53	81.1	24	33	72.7
TOWNS	5,605	7,169	78.2	3,198	4,084	78.3	2,407	3,085	78.0
GRAND TOTAL	6,458	8,442	76.5	3,679	4,813	76.4	2,779	3,629	76.6

2000 GENERAL ELECTION
VOTER TURNOUT BY AGE GROUP

CONSERVATIVE LT/LD SUMMARY

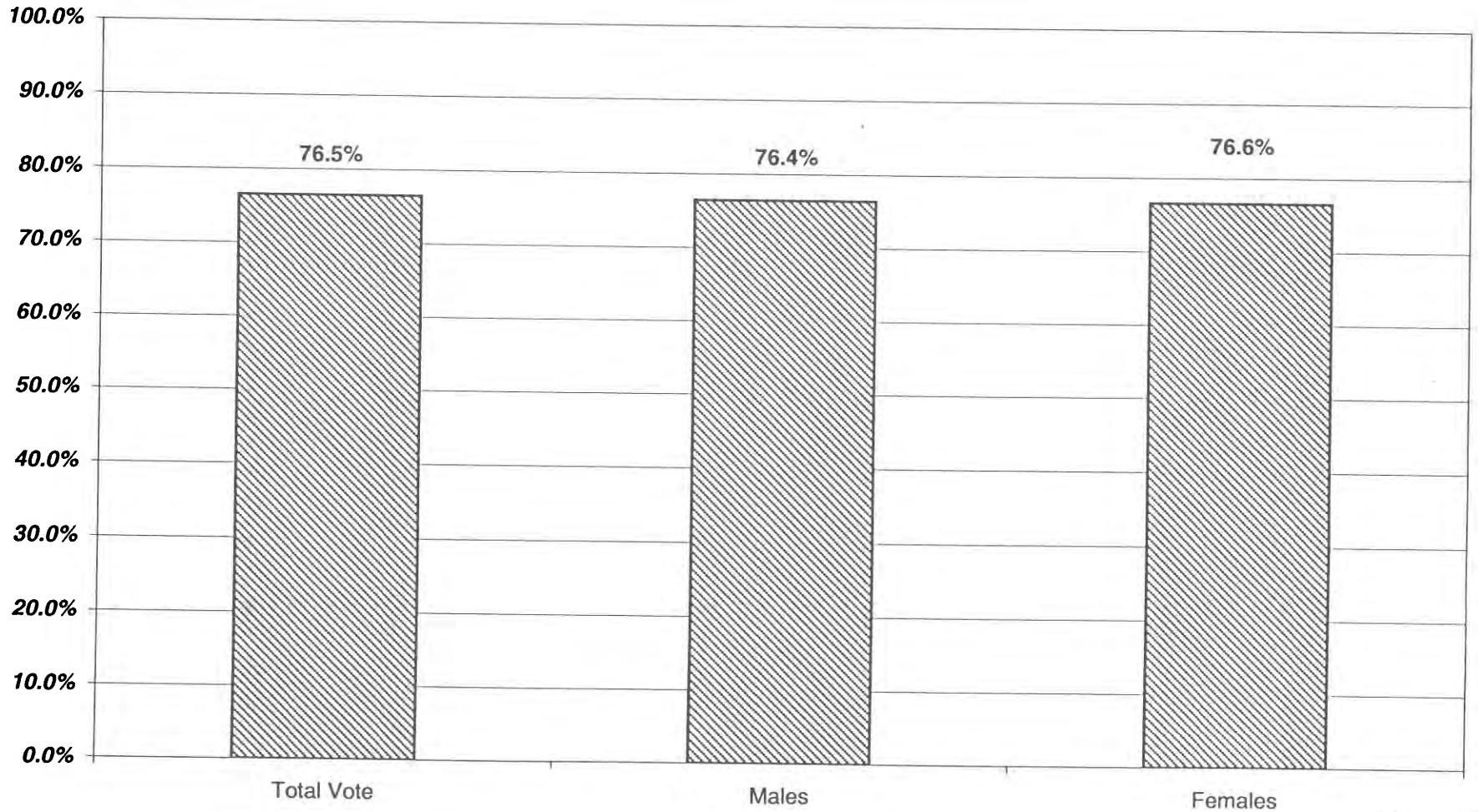
LEGISLATIVE DISTRICT OR TOWN	18-24			25-34			35-44		
	VOTED	REGISTERED	TURNOUT	VOTED	REGISTERED	TURNOUT	VOTED	REGISTERED	TURNOUT
Leg. Dist. 06	5	11	45.5	29	46	63.0	31	42	73.8
Leg. Dist. 21	9	15	60.0	16	28	57.1	30	46	65.2
Leg. Dist. 22	1	7	14.3	7	11	63.6	3	8	37.5
Leg. Dist. 23	7	11	63.6	10	22	45.5	15	29	51.7
Leg. Dist. 24	11	17	64.7	33	42	78.6	36	52	69.2
Leg. Dist. 25	5	9	55.6	2	12	16.7	10	16	62.5
Leg. Dist. 26	7	18	38.9	31	55	56.4	39	52	75.0
Leg. Dist. 27	4	7	57.1	8	19	42.1	19	26	73.1
Leg. Dist. 28	3	10	30.0	15	27	55.6	23	35	65.7
Leg. Dist. 29	4	10	40.0	13	27	48.1	20	27	74.1
CITY	56	115	48.7	164	289	56.7	226	333	67.9
Brighton	13	20	65.0	31	42	73.8	31	46	67.4
Chili	18	37	48.6	48	80	60.0	102	120	85.0
Clarkson	3	5	60.0	20	29	69.0	24	32	75.0
East Rochester	4	7	57.1	13	18	72.2	19	28	67.9
Gates	14	24	58.3	56	87	64.4	86	120	71.7
Greece	64	122	52.5	175	276	63.4	373	480	77.7
Hamlin	10	15	66.7	20	31	64.5	39	45	86.7
Henrietta	17	29	58.6	52	77	67.5	120	147	81.6
Irondequoit	25	43	58.1	74	122	60.7	126	157	80.3
Mendon	1	7	14.3	9	13	69.2	26	26	100.0
Ogden	14	30	46.7	41	57	71.9	89	107	83.2
Parma	10	16	62.5	25	44	56.8	55	68	80.9
Penfield	20	25	80.0	32	42	76.2	71	88	80.7
Perinton	14	35	40.0	43	69	62.3	81	103	78.6
Pittsford	7	9	77.8	23	31	74.2	33	36	91.7
Riga	2	5	40.0	13	15	86.7	20	28	71.4
Rush	1	4	25.0	4	4	100.0	14	17	82.4
Sweden	7	15	46.7	14	26	53.8	37	55	67.3
Webster	36	51	70.6	54	78	69.2	114	145	78.6
Wheatland	5	11	45.5	11	16	68.8	19	25	76.0
TOWNS	285	510	55.9	758	1,157	65.5	1,479	1,873	79.0
GRAND TOTAL	341	625	54.6	922	1,446	63.8	1,705	2,206	77.3

2000 GENERAL ELECTION
VOTER TURNOUT BY AGE GROUP

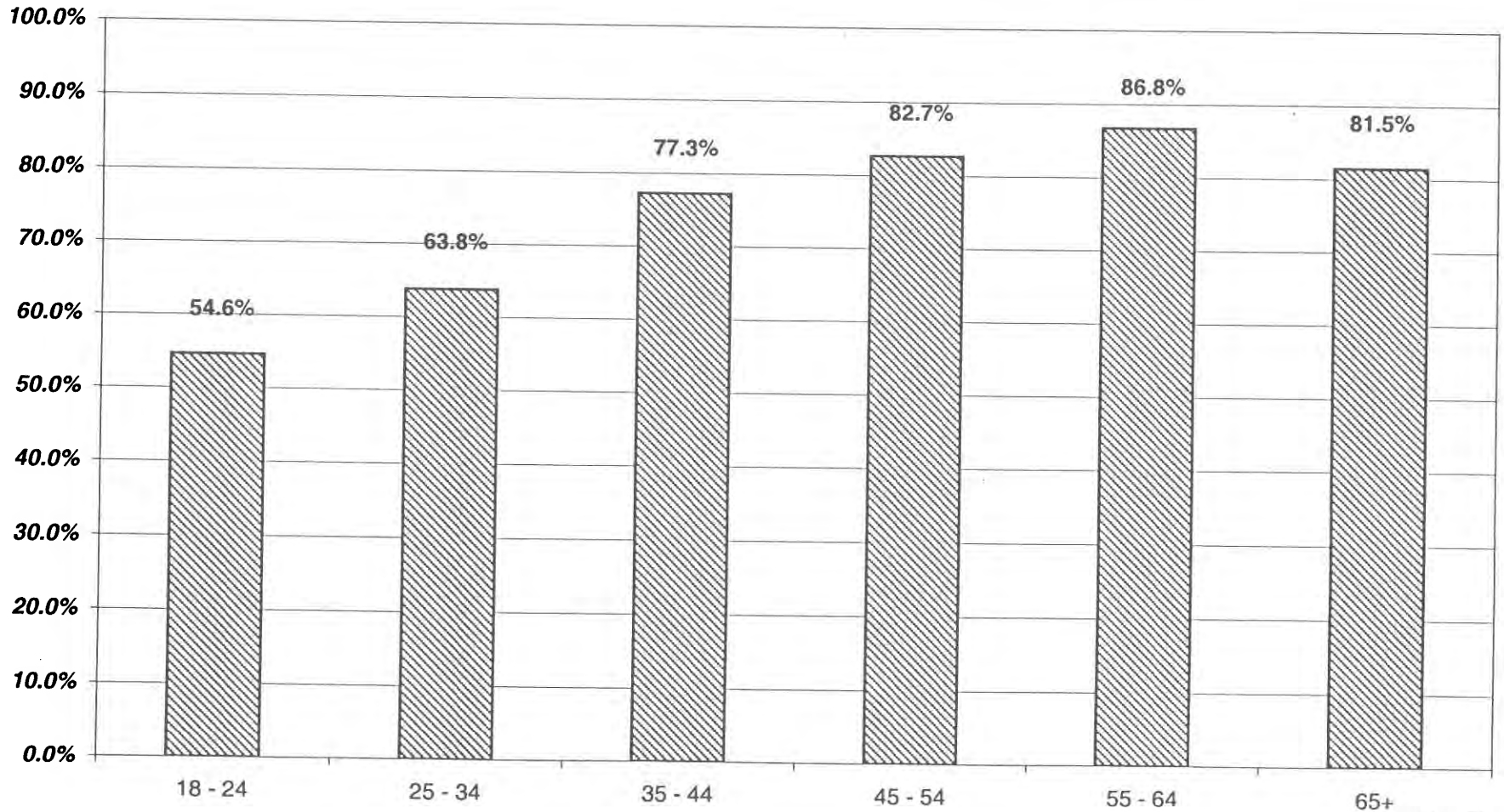
CONSERVATIVE LT/LD SUMMARY

LEGISLATIVE DISTRICT OR TOWN	45-54			55-64			65+		
	VOTED	REGISTERED	TURNOUT	VOTED	REGISTERED	TURNOUT	VOTED	REGISTERED	TURNOUT
Leg. Dist. 06	41	47	87.2	17	21	81.0	10	12	83.3
Leg. Dist. 21	28	41	68.3	11	17	64.7	5	5	100.0
Leg. Dist. 22	3	7	42.9	4	7	57.1	1	1	100.0
Leg. Dist. 23	16	24	66.7	7	12	58.3	4	5	80.0
Leg. Dist. 24	28	31	90.3	21	22	95.5	17	20	85.0
Leg. Dist. 25	10	13	76.9	3	3	100.0	4	3	133.3
Leg. Dist. 26	26	45	57.8	15	15	100.0	9	8	112.5
Leg. Dist. 27	18	26	69.2	8	10	80.0	0	1	0.0
Leg. Dist. 28	23	38	60.5	16	19	84.2	10	14	71.4
Leg. Dist. 29	20	28	71.4	8	11	72.7	7	11	63.6
CITY	213	300	71.0	110	137	80.3	67	80	83.8
Brighton	42	55	76.4	32	37	86.5	35	41	85.4
Chili	76	90	84.4	63	69	91.3	39	44	88.6
Clarkson	18	21	85.7	5	6	83.3	2	2	100.0
East Rochester	20	25	80.0	5	7	71.4	3	3	100.0
Gates	75	86	87.2	52	62	83.9	20	29	69.0
Greece	314	397	79.1	202	232	87.1	134	157	85.4
Hamlin	34	44	77.3	10	11	90.9	5	7	71.4
Henrietta	115	140	82.1	80	91	87.9	39	52	75.0
Irondequoit	163	182	89.6	92	114	80.7	78	99	78.8
Mendon	22	27	81.5	18	23	78.3	5	7	71.4
Ogden	94	106	88.7	45	46	97.8	20	27	74.1
Parma	60	70	85.7	36	38	94.7	13	17	76.5
Penfield	108	128	84.4	60	71	84.5	37	48	77.1
Perinton	108	118	91.5	113	124	91.1	55	66	83.3
Pittsford	44	47	93.6	43	47	91.5	18	24	75.0
Riga	18	23	78.3	12	12	100.0	3	3	100.0
Rush	13	20	65.0	9	10	90.0	3	4	75.0
Sweden	25	30	83.3	7	9	77.8	5	5	100.0
Webster	128	138	92.8	76	88	86.4	41	49	83.7
Wheatland	18	19	94.7	12	13	92.3	2	2	100.0
TOWNS	1,495	1,766	84.7	972	1,110	87.6	557	686	81.2
GRAND TOTAL	1,708	2,066	82.7	1,082	1,247	86.8	624	766	81.5

CONSERVATIVE TURNOUT - TOTAL AND GENDER 2000 GENERAL ELECTION



CONSERVATIVE TURNOUT BY AGE GROUP 2000 GENERAL ELECTION



LIBERAL SUMMARY

2000 GENERAL ELECTION
VOTER TURNOUT BY GENDER

LIBERAL LT/LD SUMMARY

LEGISLATIVE DISTRICT OR TOWN	TOTAL LIBERAL			MALES			FEMALES		
	VOTED	REGISTERED	TURNOUT	VOTED	REGISTERED	TURNOUT	VOTED	REGISTERED	TURNOUT
Leg. Dist. 06	34	69	49.3	12	22	54.5	22	47	46.8
Leg. Dist. 21	62	113	54.9	20	46	43.5	42	67	62.7
Leg. Dist. 22	17	54	31.5	3	27	11.1	14	27	51.9
Leg. Dist. 23	67	125	53.6	39	64	60.9	28	61	45.9
Leg. Dist. 24	106	164	64.6	48	83	57.8	58	81	71.6
Leg. Dist. 25	26	58	44.8	9	19	47.4	17	39	43.6
Leg. Dist. 26	48	90	53.3	21	37	56.8	27	53	50.9
Leg. Dist. 27	50	74	67.6	20	29	69.0	30	45	66.7
Leg. Dist. 28	32	69	46.4	16	35	45.7	16	34	47.1
Leg. Dist. 29	33	59	55.9	19	29	65.5	14	30	46.7
CITY	475	875	54.3	207	391	52.9	268	484	55.4
Brighton	93	127	73.2	41	58	70.7	52	69	75.4
Chili	73	114	64.0	25	39	64.1	48	75	64.0
Clarkson	12	16	75.0	5	8	62.5	7	8	87.5
East Rochester	29	40	72.5	10	14	71.4	19	26	73.1
Gates	65	132	49.2	31	59	52.5	34	73	46.6
Greece	258	487	53.0	100	209	47.8	158	278	56.8
Hamlin	24	38	63.2	7	10	70.0	17	28	60.7
Henrietta	111	162	68.5	42	62	67.7	69	100	69.0
Irondequoit	154	233	66.1	60	97	61.9	94	136	69.1
Mendon	10	26	38.5	3	9	33.3	7	17	41.2
Ogden	52	93	55.9	27	44	61.4	25	49	51.0
Parma	27	64	42.2	10	26	38.5	17	38	44.7
Penfield	83	138	60.1	39	62	62.9	44	76	57.9
Perinton	86	153	56.2	40	64	62.5	46	89	51.7
Pittsford	50	74	67.6	17	25	68.0	33	49	67.3
Riga	18	28	64.3	5	8	62.5	13	20	65.0
Rush	13	22	59.1	7	10	70.0	6	12	50.0
Sweden	29	58	50.0	12	21	57.1	17	37	45.9
Webster	108	175	61.7	38	64	59.4	70	111	63.1
Wheatland	24	36	66.7	10	14	71.4	14	22	63.6
TOWNS	1,319	2,216	59.5	529	903	58.6	790	1,313	60.2
GRAND TOTAL	1,794	3,091	58.0	736	1,294	56.9	1,058	1,797	58.9

2000 GENERAL ELECTION
VOTER TURNOUT BY AGE GROUP

LIBERAL LT/LD SUMMARY

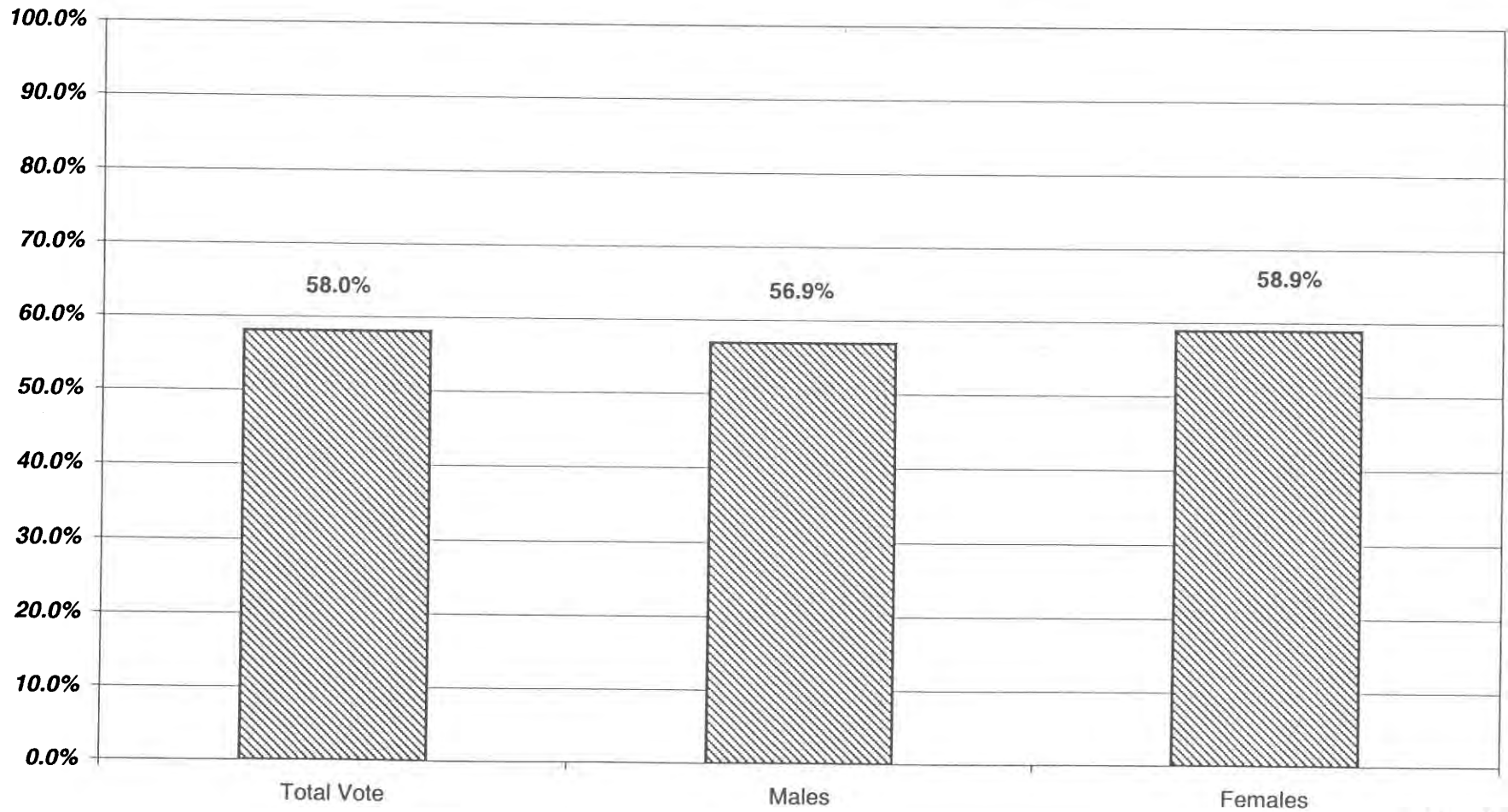
LEGISLATIVE DISTRICT OR TOWN	18-24			25-34			35-44		
	VOTED	REGISTERED	TURNOUT	VOTED	REGISTERED	TURNOUT	VOTED	REGISTERED	TURNOUT
Leg. Dist. 06	3	13	23.1	7	19	36.8	11	16	68.8
Leg. Dist. 21	7	24	29.2	23	39	59.0	17	29	58.6
Leg. Dist. 22	1	6	16.7	8	21	38.1	5	10	50.0
Leg. Dist. 23	16	35	45.7	17	44	38.6	11	21	52.4
Leg. Dist. 24	18	32	56.3	29	44	65.9	19	34	55.9
Leg. Dist. 25	5	15	33.3	5	20	25.0	6	8	75.0
Leg. Dist. 26	6	22	27.3	21	33	63.6	7	14	50.0
Leg. Dist. 27	5	8	62.5	17	22	77.3	11	19	57.9
Leg. Dist. 28	8	17	47.1	7	23	30.4	6	11	54.5
Leg. Dist. 29	6	7	85.7	8	14	57.1	8	17	47.1
CITY	75	179	41.9	142	279	50.9	101	179	56.4
Brighton	15	28	53.6	14	32	43.8	31	31	100.0
Chili	11	32	34.4	12	26	46.2	18	20	90.0
Clarkson	2	2	100.0	2	4	50.0	4	5	80.0
East Rochester	6	5	120.0	5	11	45.5	6	10	60.0
Gates	6	22	27.3	10	34	29.4	20	36	55.6
Greece	65	138	47.1	54	143	37.8	62	97	63.9
Hamlin	2	9	22.2	8	11	72.7	6	7	85.7
Henrietta	24	33	72.7	24	45	53.3	26	38	68.4
Irondequoit	17	35	48.6	27	50	54.0	42	57	73.7
Mendon	4	13	30.8	2	6	33.3	3	5	60.0
Ogden	11	24	45.8	8	22	36.4	13	21	61.9
Parma	3	22	13.6	2	8	25.0	10	20	50.0
Penfield	12	27	44.4	18	35	51.4	22	30	73.3
Perinton	24	49	49.0	19	41	46.3	12	24	50.0
Pittsford	7	12	58.3	12	26	46.2	12	14	85.7
Riga	3	7	42.9	5	6	83.3	4	6	66.7
Rush	2	5	40.0	1	2	50.0	6	7	85.7
Sweden	6	22	27.3	3	11	27.3	8	9	88.9
Webster	16	37	43.2	21	45	46.7	36	49	73.5
Wheatland	5	8	62.5	5	11	45.5	9	12	75.0
TOWNS	241	530	45.5	252	569	44.3	350	498	70.3
GRAND TOTAL	316	709	44.6	394	848	46.5	451	677	66.6

2000 GENERAL ELECTION
VOTER TURNOUT BY AGE GROUP

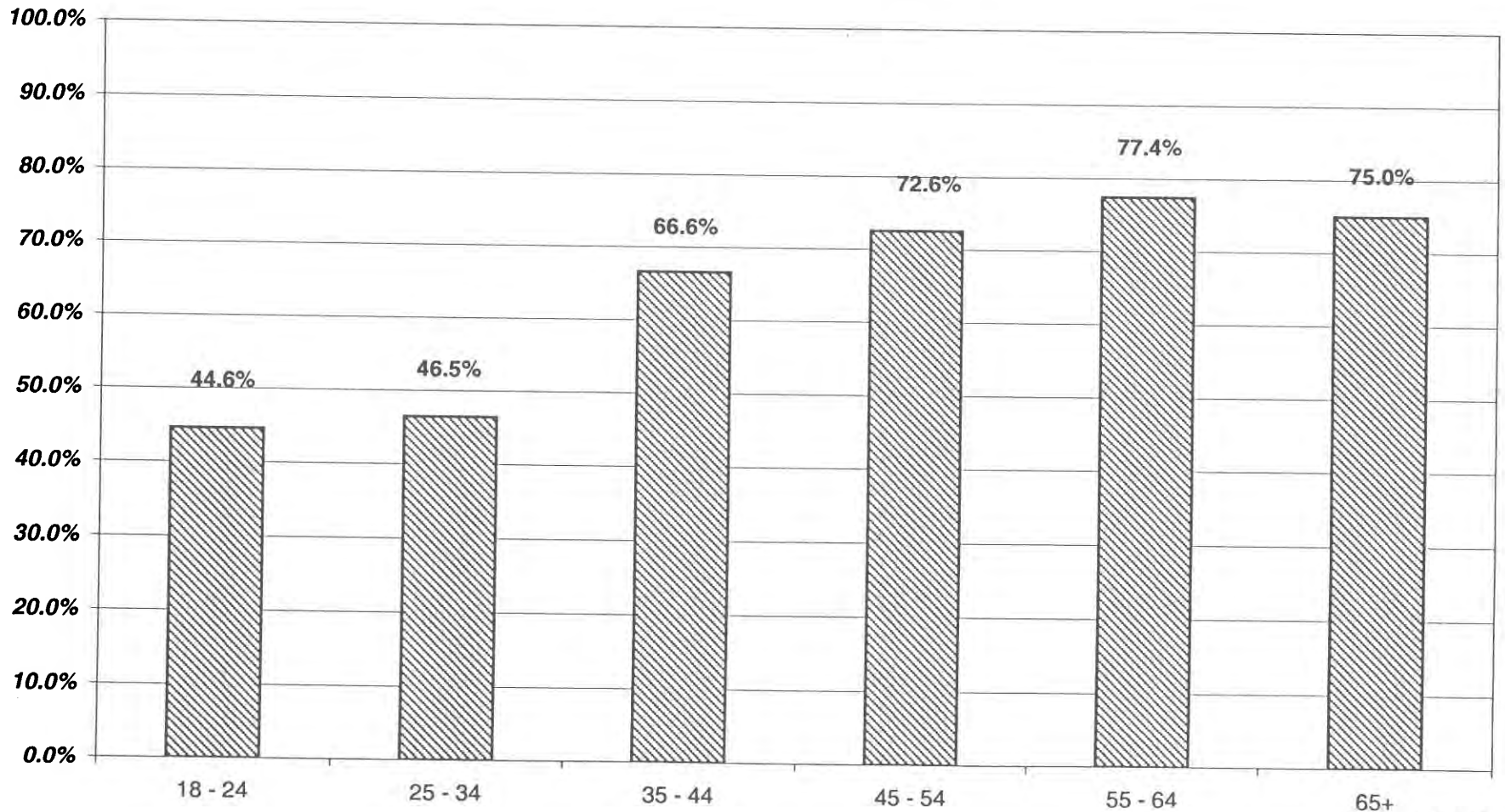
LIBERAL LT/LD SUMMARY

LEGISLATIVE DISTRICT OR TOWN	45-54			55-64			65+		
	VOTED	REGISTERED	TURNOUT	VOTED	REGISTERED	TURNOUT	VOTED	REGISTERED	TURNOUT
Leg. Dist. 06	10	15	66.7	2	3	66.7	1	2	50.0
Leg. Dist. 21	11	16	68.8	3	3	100.0	1	1	100.0
Leg. Dist. 22	1	11	9.1	1	5	20.0	0	0	0.0
Leg. Dist. 23	7	10	70.0	7	6	116.7	9	9	100.0
Leg. Dist. 24	25	33	75.8	7	11	63.6	6	8	75.0
Leg. Dist. 25	6	10	60.0	1	2	50.0	3	3	100.0
Leg. Dist. 26	12	17	70.6	2	4	50.0	0	0	0.0
Leg. Dist. 27	10	15	66.7	3	5	60.0	4	5	80.0
Leg. Dist. 28	5	8	62.5	2	5	40.0	4	5	80.0
Leg. Dist. 29	7	12	58.3	2	4	50.0	2	5	40.0
CITY	94	147	63.9	30	48	62.5	30	38	78.9
Brighton	14	17	82.4	7	7	100.0	11	11	100.0
Chili	20	22	90.9	6	6	100.0	5	7	71.4
Clarkson	2	3	66.7	1	1	100.0	1	1	100.0
East Rochester	5	5	100.0	2	2	100.0	4	6	66.7
Gates	15	23	65.2	8	9	88.9	5	7	71.4
Greece	48	68	70.6	16	23	69.6	9	12	75.0
Hamlin	5	7	71.4	2	3	66.7	1	1	100.0
Henrietta	22	28	78.6	11	12	91.7	3	5	60.0
Irondequoit	43	54	79.6	13	16	81.3	8	15	53.3
Mendon	1	2	50.0	0	0	0.0	0	0	0.0
Ogden	13	18	72.2	6	6	100.0	1	2	50.0
Parma	7	8	87.5	4	4	100.0	1	2	50.0
Penfield	12	25	48.0	13	15	86.7	5	5	100.0
Perinton	18	21	85.7	9	12	75.0	4	5	80.0
Pittsford	11	13	84.6	4	4	100.0	4	4	100.0
Riga	5	7	71.4	0	1	0.0	1	1	100.0
Rush	3	4	75.0	0	1	0.0	0	2	0.0
Sweden	9	12	75.0	2	3	66.7	1	1	100.0
Webster	26	32	81.3	3	4	75.0	5	7	71.4
Wheatland	5	5	100.0	0	0	0.0	0	0	0.0
TOWNS	284	374	75.9	107	129	82.9	69	94	73.4
GRAND TOTAL:	378	521	72.6	137	177	77.4	99	132	75.0

LIBERAL TURNOUT - TOTAL AND GENDER 2000 GENERAL ELECTION



LIBERAL TURNOUT BY AGE GROUP 2000 GENERAL ELECTION



RIGHT TO LIFE SUMMARY

2000 GENERAL ELECTION
VOTER TURNOUT BY GENDER

RIGHT TO LIFE LT/LD SUMMARY

LEGISLATIVE DISTRICT OR TOWN	TOTAL RIGHT TO LIFE			MALES			FEMALES		
	VOTED	REGISTERED	TURNOUT	VOTED	REGISTERED	TURNOUT	VOTED	REGISTERED	TURNOUT
Leg. Dist. 06	20	34	58.8	5	9	55.6	15	25	60.0
Leg. Dist. 21	35	59	59.3	11	25	44.0	24	34	70.6
Leg. Dist. 22	10	46	21.7	3	21	14.3	7	25	28.0
Leg. Dist. 23	29	56	51.8	9	18	50.0	20	38	52.6
Leg. Dist. 24	41	65	63.1	19	28	67.9	22	37	59.5
Leg. Dist. 25	20	46	43.5	9	17	52.9	11	29	37.9
Leg. Dist. 26	35	73	47.9	12	26	46.2	23	47	48.9
Leg. Dist. 27	25	42	59.5	12	23	52.2	13	19	68.4
Leg. Dist. 28	24	59	40.7	6	20	30.0	18	39	46.2
Leg. Dist. 29	26	51	51.0	10	22	45.5	16	29	55.2
CITY	265	531	49.9	96	209	45.9	169	322	52.5
Brighton	27	38	71.1	9	16	56.3	18	22	81.8
Chili	74	100	74.0	29	42	69.0	45	58	77.6
Clarkson	26	31	83.9	6	7	85.7	20	24	83.3
East Rochester	20	27	74.1	5	5	100.0	15	22	68.2
Gates	41	68	60.3	18	29	62.1	23	39	59.0
Greece	195	267	73.0	80	95	84.2	115	172	66.9
Hamlin	18	29	62.1	6	10	60.0	12	19	63.2
Henrietta	56	77	72.7	18	28	64.3	38	49	77.6
Irondequoit	115	135	85.2	43	53	81.1	72	82	87.8
Mendon	11	15	73.3	4	6	66.7	7	9	77.8
Ogden	44	62	71.0	19	24	79.2	25	38	65.8
Parma	32	44	72.7	9	15	60.0	23	29	79.3
Penfield	54	70	77.1	25	29	86.2	29	41	70.7
Perinton	78	95	82.1	28	34	82.4	50	61	82.0
Pittsford	34	42	81.0	15	19	78.9	19	23	82.6
Riga	15	27	55.6	5	12	41.7	10	15	66.7
Rush	8	13	61.5	1	4	25.0	7	9	77.8
Sweden	35	53	66.0	14	19	73.7	21	34	61.8
Webster	86	113	76.1	27	38	71.1	59	75	78.7
Wheatland	7	8	87.5	4	4	100.0	3	4	75.0
TOWNS	976	1,314	74.3	365	489	74.6	611	825	74.1
GRAND TOTAL	1,241	1,845	67.3	461	698	66.0	780	1,147	68.0

2000 GENERAL ELECTION
VOTER TURNOUT BY AGE GROUP

RIGHT TO LIFE LT/LD SUMMARY

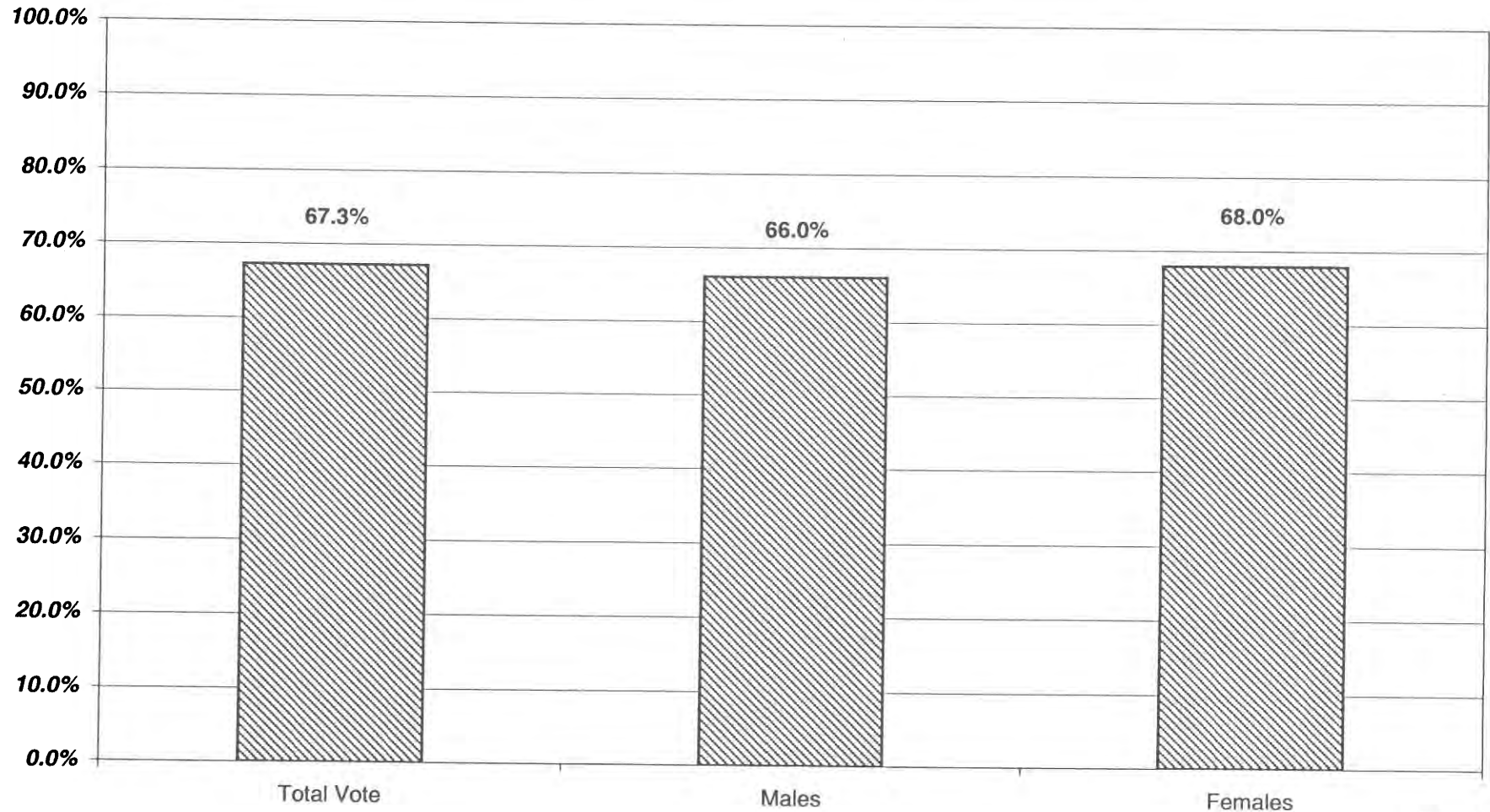
LEGISLATIVE DISTRICT OR TOWN	18-24			25-34			35-44		
	VOTED	REGISTERED	TURNOUT	VOTED	REGISTERED	TURNOUT	VOTED	REGISTERED	TURNOUT
Leg. Dist. 06	4	10	40.0	1	3	33.3	3	7	42.9
Leg. Dist. 21	3	11	27.3	5	14	35.7	14	19	73.7
Leg. Dist. 22	5	16	31.3	4	16	25.0	1	8	12.5
Leg. Dist. 23	7	13	53.8	4	14	28.6	6	11	54.5
Leg. Dist. 24	3	5	60.0	10	19	52.6	9	14	64.3
Leg. Dist. 25	4	13	30.8	6	9	66.7	7	18	38.9
Leg. Dist. 26	3	8	37.5	9	18	50.0	12	25	48.0
Leg. Dist. 27	3	11	27.3	4	7	57.1	10	10	100.0
Leg. Dist. 28	1	8	12.5	4	21	19.0	9	15	60.0
Leg. Dist. 29	0	5	0.0	6	14	42.9	5	13	38.5
CITY	33	100	33.0	53	135	39.3	76	140	54.3
Brighton	4	4	100.0	4	7	57.1	10	11	90.9
Chili	9	15	60.0	12	22	54.5	29	30	96.7
Clarkson	5	11	45.5	3	3	100.0	8	8	100.0
East Rochester	0	4	0.0	3	5	60.0	6	7	85.7
Gates	3	11	27.3	9	18	50.0	15	20	75.0
Greece	25	47	53.2	27	47	57.4	47	58	81.0
Hamlin	1	1	100.0	2	5	40.0	7	13	53.8
Henrietta	3	3	100.0	4	12	33.3	21	24	87.5
Irondequoit	5	9	55.6	16	22	72.7	35	35	100.0
Mendon	1	1	100.0	1	1	100.0	1	3	33.3
Ogden	5	8	62.5	5	10	50.0	20	26	76.9
Parma	2	3	66.7	5	10	50.0	14	18	77.8
Penfield	4	6	66.7	13	16	81.3	18	23	78.3
Perinton	5	12	41.7	8	10	80.0	25	31	80.6
Pittsford	4	7	57.1	6	7	85.7	9	10	90.0
Riga	0	3	0.0	1	2	50.0	4	7	57.1
Rush	0	1	0.0	1	2	50.0	3	5	60.0
Sweden	4	8	50.0	6	13	46.2	10	12	83.3
Webster	6	15	40.0	11	17	64.7	22	26	84.6
Wheatland	4	4	100.0	0	1	0.0	2	2	100.0
TOWNS	90	173	52.0	137	230	59.6	306	369	82.9
GRAND TOTAL	123	273	45.1	190	365	52.1	382	509	75.0

2000 GENERAL ELECTION
VOTER TURNOUT BY AGE GROUP

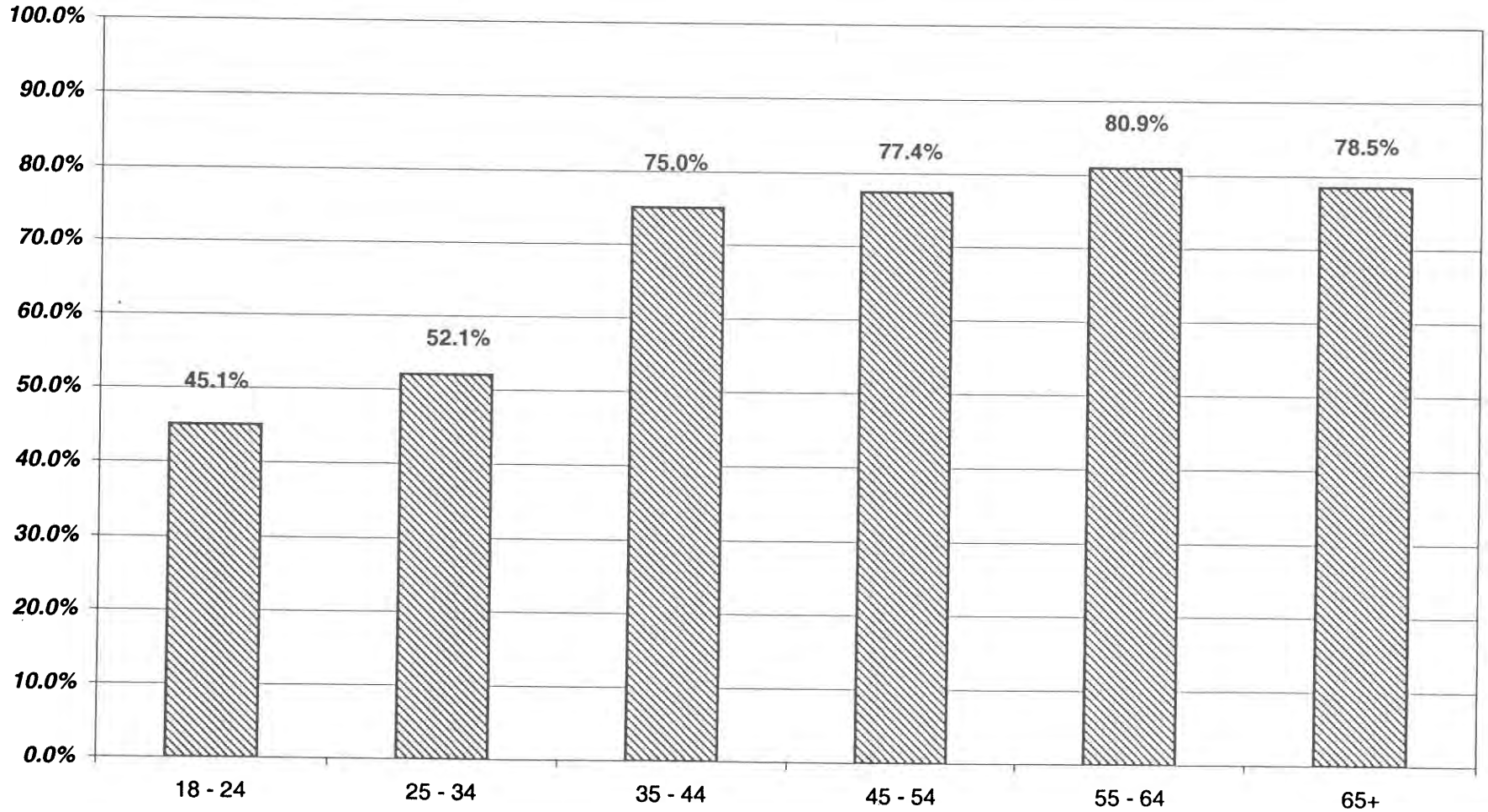
RIGHT TO LIFE LT/LD SUMMARY

LEGISLATIVE DISTRICT OR TOWN	45-54			55-64			65+		
	VOTED	REGISTERED	TURNOUT	VOTED	REGISTERED	TURNOUT	VOTED	REGISTERED	TURNOUT
Leg. Dist. 06	5	5	100.0	3	3	100.0	4	6	66.7
Leg. Dist. 21	10	12	83.3	2	2	100.0	1	1	100.0
Leg. Dist. 22	0	5	0.0	0	1	0.0	0	0	0.0
Leg. Dist. 23	7	13	53.8	3	3	100.0	2	2	100.0
Leg. Dist. 24	8	10	80.0	6	7	85.7	5	10	50.0
Leg. Dist. 25	2	5	40.0	1	1	100.0	0	0	0.0
Leg. Dist. 26	5	14	35.7	4	5	80.0	2	3	66.7
Leg. Dist. 27	3	8	37.5	2	3	66.7	3	3	100.0
Leg. Dist. 28	5	12	41.7	2	2	100.0	3	1	300.0
Leg. Dist. 29	9	10	90.0	3	3	100.0	3	5	60.0
CITY	54	94	57.4	26	30	86.7	23	31	74.2
Brighton	2	4	50.0	2	2	100.0	5	10	50.0
Chili	13	21	61.9	6	6	100.0	3	4	75.0
Clarkson	10	9	111.1	0	0	0.0	0	0	0.0
East Rochester	5	5	100.0	3	3	100.0	3	3	100.0
Gates	9	11	81.8	2	3	66.7	3	5	60.0
Greece	54	63	85.7	18	22	81.8	23	29	79.3
Hamlin	6	7	85.7	0	0	0.0	2	3	66.7
Henrietta	20	25	80.0	1	5	20.0	6	6	100.0
Irondequoit	35	43	81.4	10	12	83.3	14	14	100.0
Mendon	4	4	100.0	4	6	66.7	0	0	0.0
Ogden	9	12	75.0	3	4	75.0	2	2	100.0
Parma	9	10	90.0	0	1	0.0	2	2	100.0
Penfield	10	13	76.9	3	4	75.0	6	8	75.0
Perinton	23	22	104.5	11	13	84.6	6	7	85.7
Pittsford	7	8	87.5	1	1	100.0	7	9	77.8
Riga	6	11	54.5	2	2	100.0	2	2	100.0
Rush	3	3	100.0	1	2	50.0	0	0	0.0
Sweden	10	12	83.3	4	6	66.7	1	2	50.0
Webster	29	34	85.3	9	9	100.0	9	12	75.0
Wheatland	1	1	100.0	0	0	0.0	0	0	0.0
TOWNS	265	318	83.3	80	101	79.2	94	118	79.7
GRAND TOTAL	319	412	77.4	106	131	80.9	117	149	78.5

RIGHT TO LIFE TURNOUT - TOTAL AND GENDER 2000 GENERAL ELECTION



RIGHT TO LIFE TURNOUT BY AGE GROUP 2000 GENERAL ELECTION



GREEN SUMMARY

2000 GENERAL ELECTION
VOTER TURNOUT BY GENDER

GREEN LT/LD SUMMARY

LEGISLATIVE DISTRICT OR TOWN	TOTAL GREEN			MALES			FEMALES		
	VOTED	REGISTERED	TURNOUT	VOTED	REGISTERED	TURNOUT	VOTED	REGISTERED	TURNOUT
Leg. Dist. 06	4	8	50.0	2	5	40.0	2	3	66.7
Leg. Dist. 21	14	16	87.5	6	9	66.7	8	7	114.3
Leg. Dist. 22	0	2	0.0	0	2	0.0	0	0	0.0
Leg. Dist. 23	45	57	78.9	26	32	81.3	19	25	76.0
Leg. Dist. 24	49	61	80.3	27	34	79.4	22	27	81.5
Leg. Dist. 25	17	21	81.0	14	17	82.4	3	4	75.0
Leg. Dist. 26	7	9	77.8	5	7	71.4	2	2	100.0
Leg. Dist. 27	5	7	71.4	0	2	0.0	5	5	100.0
Leg. Dist. 28	3	5	60.0	2	4	50.0	1	1	100.0
Leg. Dist. 29	3	6	50.0	1	4	25.0	2	2	100.0
CITY	147	192	76.6	83	116	71.6	64	76	84.2
Brighton	21	33	63.6	13	21	61.9	8	12	66.7
Chili	5	9	55.6	4	6	66.7	1	3	33.3
Clarkson	1	2	50.0	0	1	0.0	1	1	100.0
East Rochester	4	4	100.0	3	3	100.0	1	1	100.0
Gates	5	7	71.4	3	4	75.0	2	3	66.7
Greece	23	35	65.7	14	17	82.4	9	18	50.0
Hamlin	1	3	33.3	1	3	33.3	0	0	0.0
Henrietta	14	21	66.7	8	12	66.7	6	9	66.7
Irondequoit	18	31	58.1	12	23	52.2	6	8	75.0
Mendon	3	3	100.0	3	3	100.0	0	0	0.0
Ogden	2	5	40.0	0	2	0.0	2	3	66.7
Parma	3	6	50.0	2	4	50.0	1	2	50.0
Penfield	17	22	77.3	8	12	66.7	9	10	90.0
Perinton	12	18	66.7	6	10	60.0	6	8	75.0
Pittsford	13	16	81.3	9	12	75.0	4	4	100.0
Riga	1	2	50.0	0	1	0.0	1	1	100.0
Rush	4	4	100.0	1	1	100.0	3	3	100.0
Sweden	11	12	91.7	7	8	87.5	4	4	100.0
Webster	10	13	76.9	6	8	75.0	4	5	80.0
Wheatland	4	4	100.0	2	2	100.0	2	2	100.0
TOWNS	172	250	68.8	102	153	66.7	70	97	72.2
GRAND TOTAL	319	442	72.2	185	269	68.8	134	173	77.5

2000 GENERAL ELECTION
VOTER TURNOUT BY AGE GROUP

GREEN LT/LD SUMMARY

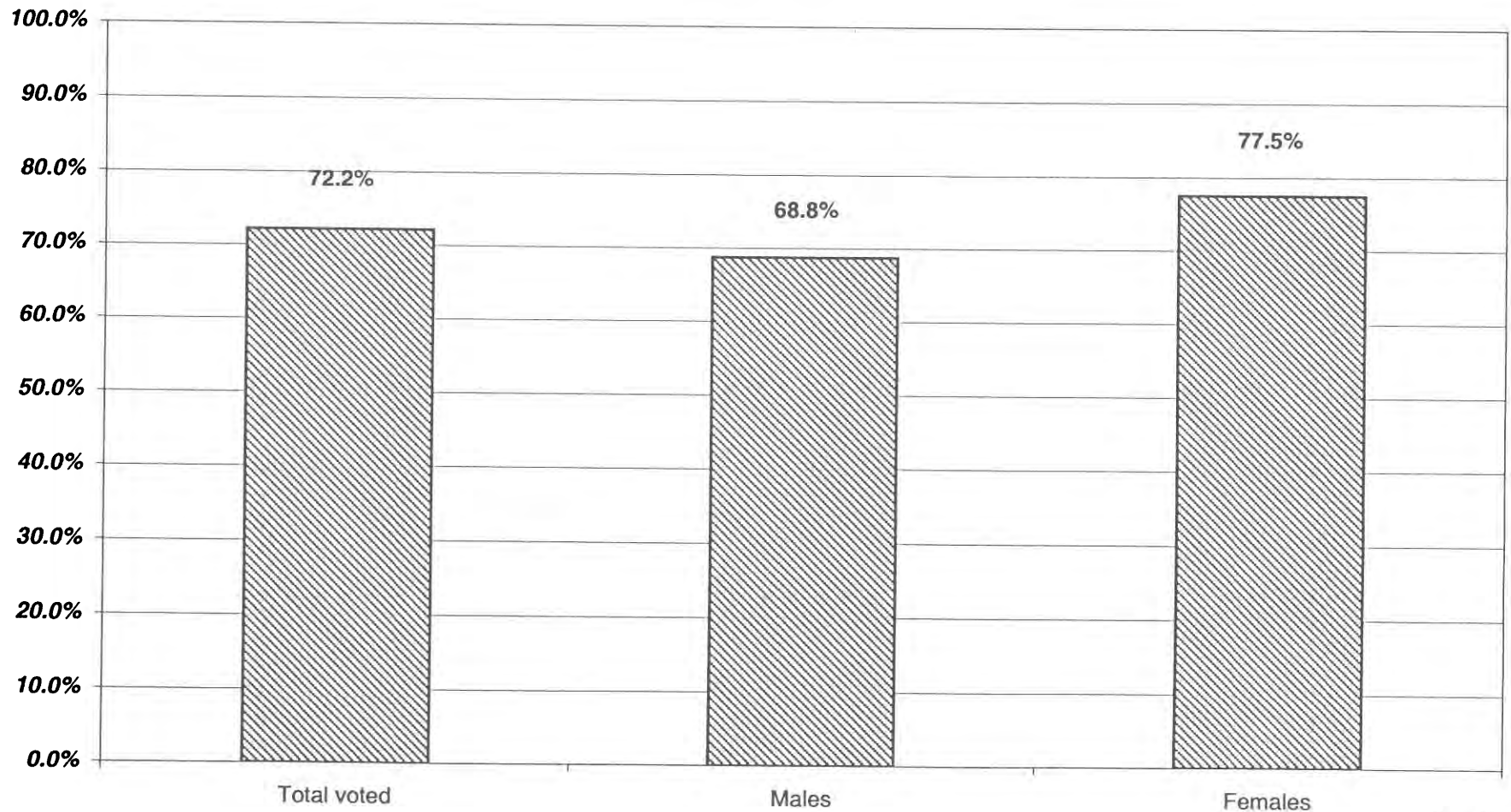
LEGISLATIVE DISTRICT OR TOWN	18-24			25-34			35-44		
	VOTED	REGISTERED	TURNOUT	VOTED	REGISTERED	TURNOUT	VOTED	REGISTERED	TURNOUT
Leg. Dist. 06	1	1	100.0	1	3	33.3	1	2	50.0
Leg. Dist. 21	6	7	85.7	5	6	83.3	3	3	100.0
Leg. Dist. 22	0	2	0.0	0	0	0.0	0	0	0.0
Leg. Dist. 23	13	18	72.2	15	20	75.0	11	12	91.7
Leg. Dist. 24	19	23	82.6	19	23	82.6	4	7	57.1
Leg. Dist. 25	11	13	84.6	3	3	100.0	0	2	0.0
Leg. Dist. 26	4	5	80.0	0	1	0.0	0	0	0.0
Leg. Dist. 27	1	2	50.0	4	5	80.0	0	0	0.0
Leg. Dist. 28	0	0	0.0	0	0	0.0	2	2	100.0
Leg. Dist. 29	1	2	50.0	1	3	33.3	0	0	0.0
CITY	56	73	76.7	48	64	75.0	21	28	75.0
Brighton	7	13	53.8	3	4	75.0	9	10	90.0
Chili	3	6	50.0	1	1	100.0	1	2	50.0
Clarkson	1	1	100.0	0	0	0.0	0	1	0.0
East Rochester	2	2	100.0	1	0	0.0	1	2	50.0
Gates	2	3	66.7	1	2	50.0	1	1	100.0
Greece	12	16	75.0	3	9	33.3	6	8	75.0
Hamlin	1	2	50.0	0	1	0.0	0	0	0.0
Henrietta	8	9	88.9	2	5	40.0	2	3	66.7
Irondequoit	9	20	45.0	4	5	80.0	4	3	133.3
Mendon	3	3	100.0	0	0	0.0	0	0	0.0
Ogden	2	3	66.7	0	2	0.0	0	0	0.0
Parma	0	1	0.0	2	2	100.0	1	2	50.0
Penfield	10	14	71.4	2	3	66.7	4	4	100.0
Perinton	7	11	63.6	2	3	66.7	0	0	0.0
Pittsford	8	9	88.9	0	2	0.0	0	0	0.0
Riga	0	0	0.0	1	1	100.0	0	0	0.0
Rush	2	2	100.0	0	0	0.0	1	1	100.0
Sweden	6	7	85.7	5	4	125.0	0	0	0.0
Webster	5	6	83.3	1	1	100.0	1	1	100.0
Wheatland	2	2	100.0	1	1	100.0	1	1	100.0
TOWNS	90	130	69.2	29	46	63.0	32	39	82.1
GRAND TOTAL	146	203	71.9	77	110	70.0	53	67	79.1

2000 GENERAL ELECTION
VOTER TURNOUT BY AGE GROUP

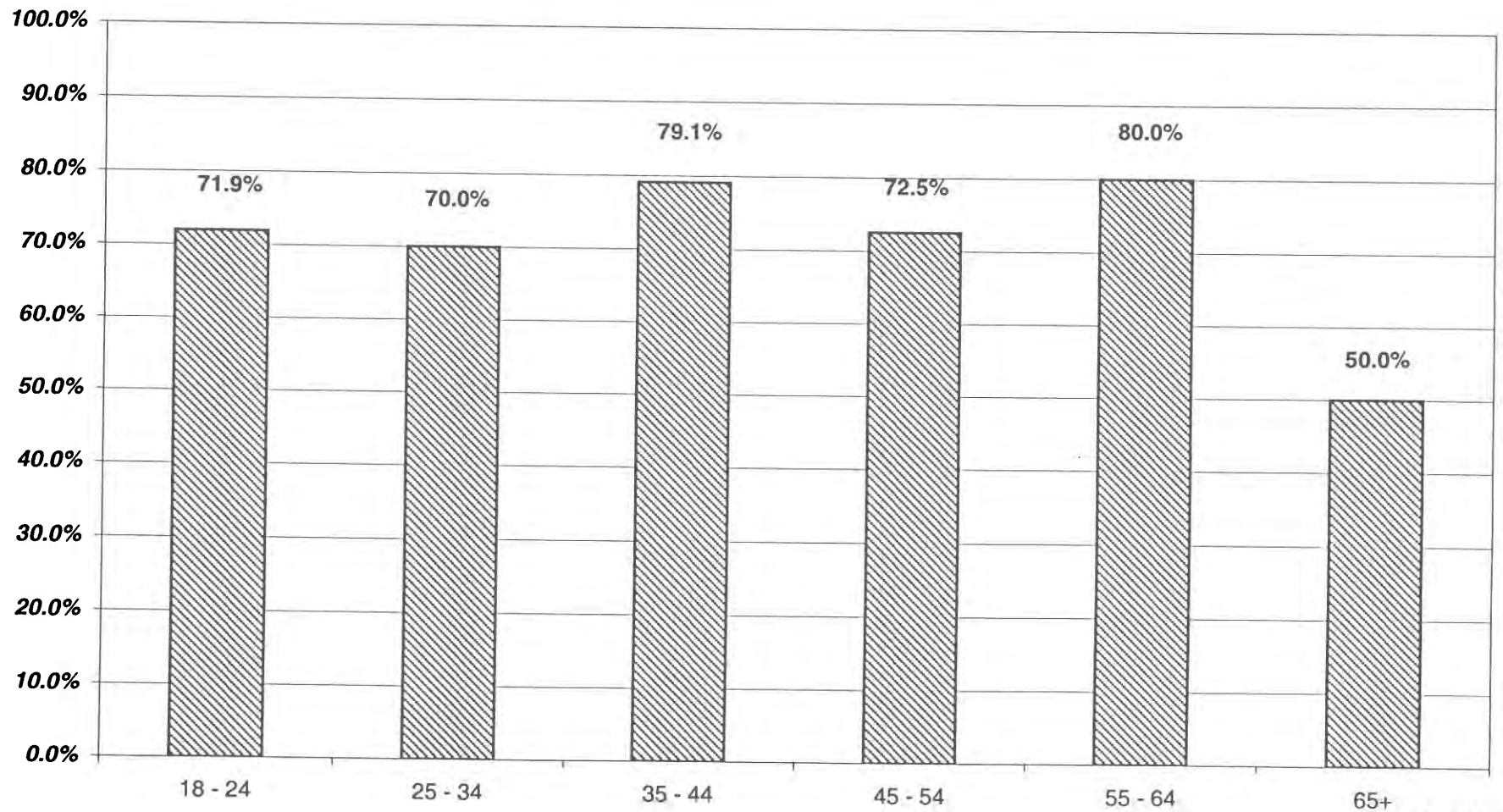
GREEN LT/LD SUMMARY

LEGISLATIVE DISTRICT OR TOWN	45-54			55-64			65+		
	VOTED	REGISTERED	TURNOUT	VOTED	REGISTERED	TURNOUT	VOTED	REGISTERED	TURNOUT
Leg. Dist. 06	1	2	50.0	0	0	0.0	0	0	0.0
Leg. Dist. 21	0	0	0.0	0	0	0.0	0	0	0.0
Leg. Dist. 22	0	0	0.0	0	0	0.0	0	0	0.0
Leg. Dist. 23	4	5	80.0	1	1	100.0	1	1	100.0
Leg. Dist. 24	4	5	80.0	1	0	0.0	2	3	66.7
Leg. Dist. 25	2	2	100.0	0	0	0.0	1	1	100.0
Leg. Dist. 26	2	2	100.0	1	1	100.0	0	0	0.0
Leg. Dist. 27	0	0	0.0	0	0	0.0	0	0	0.0
Leg. Dist. 28	1	3	33.3	0	0	0.0	0	0	0.0
Leg. Dist. 29	1	1	100.0	0	0	0.0	0	0	0.0
CITY	15	20	75.0	3	2	150.0	4	5	80.0
Brighton	0	1	0.0	2	4	50.0	0	1	0.0
Chili	0	0	0.0	0	0	0.0	0	0	0.0
Clarkson	0	0	0.0	0	0	0.0	0	0	0.0
East Rochester	0	0	0.0	0	0	0.0	0	0	0.0
Gates	1	1	100.0	0	0	0.0	0	0	0.0
Greece	0	1	0.0	2	1	200.0	0	0	0.0
Hamlin	0	0	0.0	0	0	0.0	0	0	0.0
Henrietta	1	1	100.0	0	0	0.0	1	3	33.3
Irondequoit	1	3	33.3	0	0	0.0	0	0	0.0
Mendon	0	0	0.0	0	0	0.0	0	0	0.0
Ogden	0	0	0.0	0	0	0.0	0	0	0.0
Parma	0	0	0.0	0	0	0.0	0	1	0.0
Penfield	1	1	100.0	0	0	0.0	0	0	0.0
Perinton	2	3	66.7	0	1	0.0	1	0	0.0
Pittsford	4	4	100.0	1	1	100.0	0	0	0.0
Riga	0	0	0.0	0	1	0.0	0	0	0.0
Rush	1	1	100.0	0	0	0.0	0	0	0.0
Sweden	0	0	0.0	0	0	0.0	0	1	0.0
Webster	3	4	75.0	0	0	0.0	0	1	0.0
Wheatland	0	0	0.0	0	0	0.0	0	0	0.0
TOWNS	14	20	70.0	5	8	62.5	2	7	28.6
GRAND TOTAL	29	40	72.5	8	10	80.0	6	12	50.0

GREEN TURNOUT - TOTAL AND GENDER 2000 GENERAL ELECTION



GREEN TURNOUT BY AGE GROUP 2000 GENERAL ELECTION



WORKING FAMILIES SUMMARY

2000 GENERAL ELECTION
VOTER TURNOUT BY GENDER

WORKING FAMILIES LT/LD SUMMARY

LEGISLATIVE DISTRICT OR TOWN	TOTAL WORKING FAMILIES			MALES			FEMALES		
	VOTED	REGISTERED	TURNOUT	VOTED	REGISTERED	TURNOUT	VOTED	REGISTERED	TURNOUT
Leg. Dist. 06	1	5	20.0	1	2	50.0	0	3	0.0
Leg. Dist. 21	2	7	28.6	1	4	25.0	1	3	33.3
Leg. Dist. 22	5	15	33.3	3	9	33.3	2	6	33.3
Leg. Dist. 23	5	10	50.0	1	3	33.3	4	7	57.1
Leg. Dist. 24	6	9	66.7	2	5	40.0	4	4	100.0
Leg. Dist. 25	2	8	25.0	1	6	16.7	1	2	50.0
Leg. Dist. 26	5	13	38.5	2	5	40.0	3	8	37.5
Leg. Dist. 27	2	8	25.0	2	5	40.0	0	3	0.0
Leg. Dist. 28	2	8	25.0	1	3	33.3	1	5	20.0
Leg. Dist. 29	2	11	18.2	0	3	0.0	2	8	25.0
CITY	32	94	34.0	14	45	31.1	18	49	36.7
Brighton	6	11	54.5	3	7	42.9	3	4	75.0
Chili	7	7	100.0	4	4	100.0	3	3	100.0
Clarkson	0	2	0.0	0	0	0.0	0	2	0.0
East Rochester	0	1	0.0	0	1	0.0	0	0	0.0
Gates	4	9	44.4	0	2	0.0	4	7	57.1
Greece	9	19	47.4	3	7	42.9	6	12	50.0
Hamlin	2	2	100.0	0	0	0.0	2	2	100.0
Henrietta	6	11	54.5	3	4	75.0	3	7	42.9
Irondequoit	13	17	76.5	4	8	50.0	9	9	100.0
Mendon	0	0	0.0	0	0	0.0	0	0	0.0
Ogden	1	5	20.0	1	3	33.3	0	2	0.0
Parma	4	5	80.0	3	3	100.0	1	2	50.0
Penfield	5	8	62.5	2	4	50.0	3	4	75.0
Perinton	1	4	25.0	0	2	0.0	1	2	50.0
Pittsford	1	2	50.0	0	1	0.0	1	1	100.0
Riga	3	4	75.0	1	2	50.0	2	2	100.0
Rush	2	2	100.0	1	1	100.0	1	1	100.0
Sweden	2	4	50.0	0	1	0.0	2	3	66.7
Webster	5	9	55.6	1	1	100.0	4	8	50.0
Wheatland	2	4	50.0	2	4	50.0	0	0	0.0
TOWNS	73	126	57.9	28	55	50.9	45	71	63.4
GRAND TOTAL	105	220	47.7	42	100	42.0	63	120	52.5

2000 GENERAL ELECTION
VOTER TURNOUT BY AGE GROUP

WORKING FAMILIES LT/LD SUMMARY

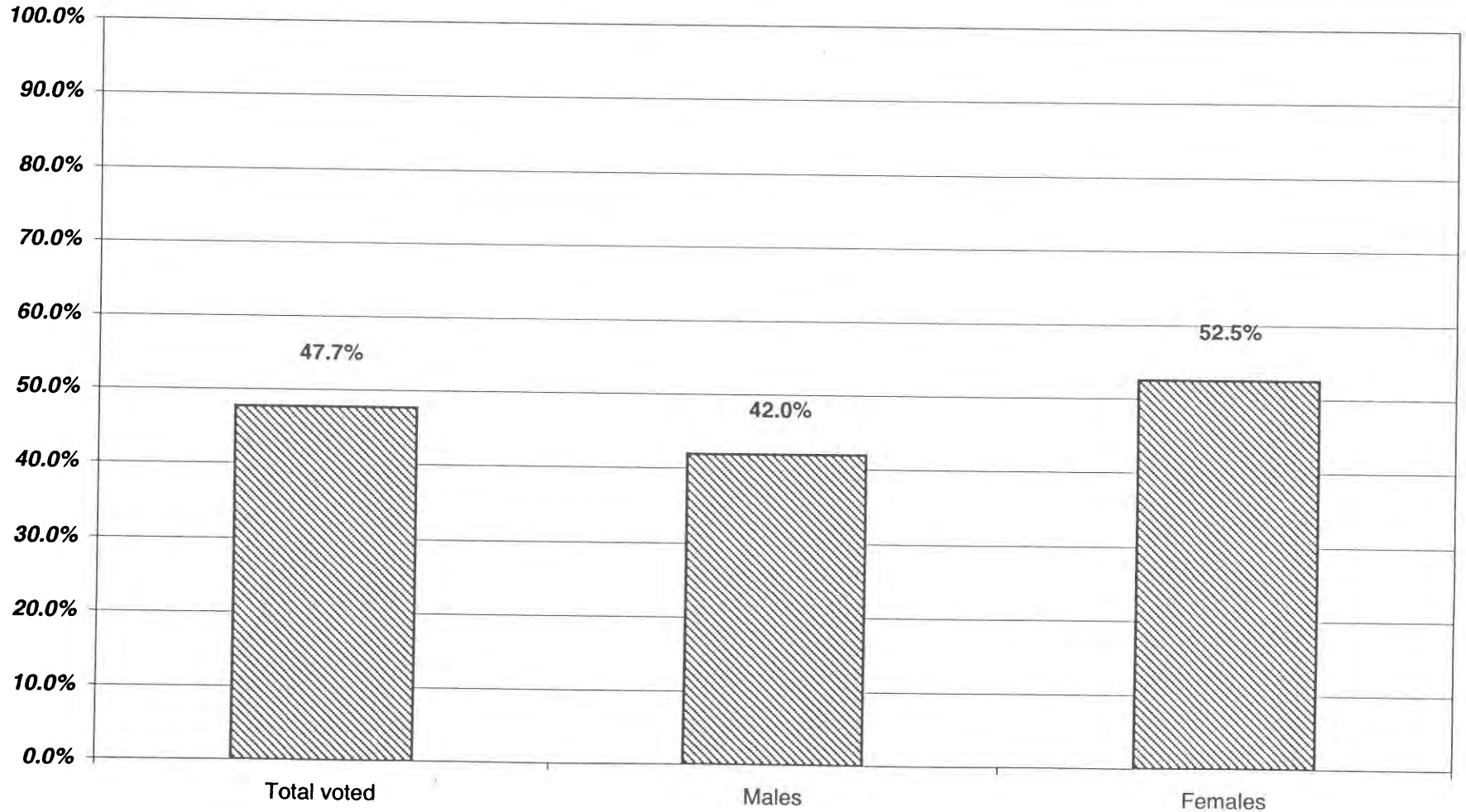
LEGISLATIVE DISTRICT OR TOWN	18-24			25-34			35-44		
	VOTED	REGISTERED	TURNOUT	VOTED	REGISTERED	TURNOUT	VOTED	REGISTERED	TURNOUT
Leg. Dist. 06	0	3	0.0	1	2	50.0	0	0	0.0
Leg. Dist. 21	0	1	0.0	1	3	33.3	0	2	0.0
Leg. Dist. 22	2	7	28.6	1	6	16.7	2	2	100.0
Leg. Dist. 23	2	3	66.7	2	4	50.0	0	2	0.0
Leg. Dist. 24	4	3	133.3	2	4	50.0	0	2	0.0
Leg. Dist. 25	1	2	50.0	1	3	33.3	0	2	0.0
Leg. Dist. 26	0	4	0.0	1	4	25.0	2	3	66.7
Leg. Dist. 27	0	2	0.0	1	3	33.3	1	2	50.0
Leg. Dist. 28	0	1	0.0	0	4	0.0	2	2	100.0
Leg. Dist. 29	1	2	50.0	1	4	25.0	0	5	0.0
CITY	10	28	35.7	11	37	29.7	7	22	31.8
Brighton	1	3	33.3	2	3	66.7	2	4	50.0
Chili	0	0	0.0	2	2	100.0	2	2	100.0
Clarkson	0	0	0.0	0	1	0.0	0	1	0.0
East Rochester	0	0	0.0	0	1	0.0	0	0	0.0
Gates	1	3	33.3	2	3	66.7	1	3	33.3
Greece	1	2	50.0	4	9	44.4	3	5	60.0
Hamlin	0	0	0.0	1	1	100.0	1	1	100.0
Henrietta	1	1	100.0	2	5	40.0	2	3	66.7
Irondequoit	1	3	33.3	5	5	100.0	5	7	71.4
Mendon	0	0	0.0	0	0	0.0	0	0	0.0
Ogden	0	0	0.0	0	2	0.0	1	3	33.3
Parma	0	0	0.0	0	0	0.0	3	4	75.0
Penfield	1	2	50.0	2	2	100.0	1	3	33.3
Perinton	1	2	50.0	0	0	0.0	0	2	0.0
Pittsford	0	0	0.0	0	1	0.0	1	1	100.0
Riga	1	1	100.0	0	0	0.0	2	3	66.7
Rush	0	0	0.0	0	0	0.0	2	2	100.0
Sweden	0	1	0.0	0	1	0.0	2	2	100.0
Webster	1	1	100.0	1	3	33.3	3	5	60.0
Wheatland	0	0	0.0	1	2	50.0	1	2	50.0
TOWNS	9	19	47.4	22	41	53.7	32	53	60.4
GRAND TOTAL	19	47	40.4	33	78	42.3	39	75	52.0

2000 GENERAL ELECTION
VOTER TURNOUT BY AGE GROUP

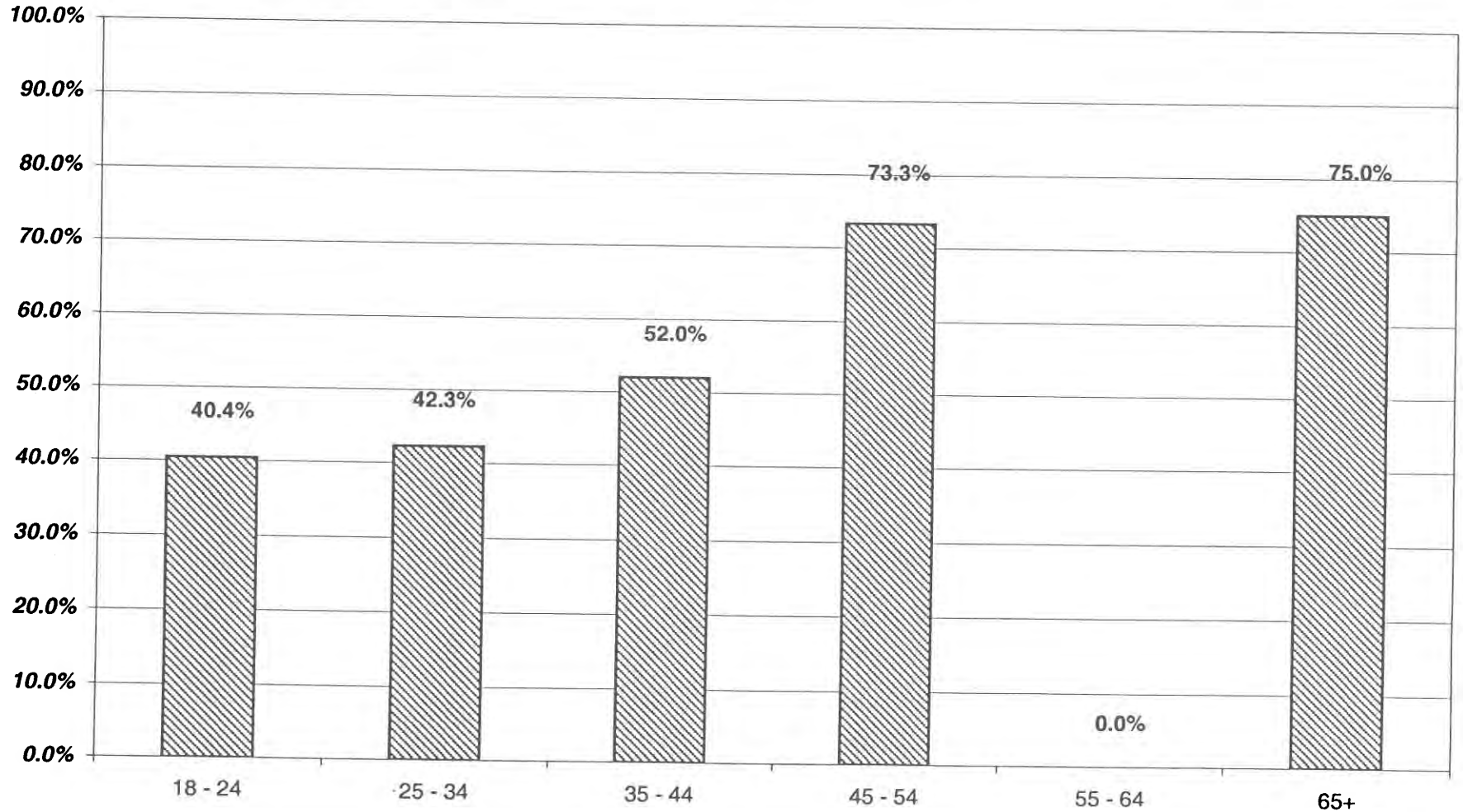
WORKING FAMILIES LT/LD SUMMARY

LEGISLATIVE DISTRICT OR TOWN	45-54			55-64			65+		
	VOTED	REGISTERED	TURNOUT	VOTED	REGISTERED	TURNOUT	VOTED	REGISTERED	TURNOUT
Leg. Dist. 06	0	0	0.0	0	0	0.0	0	0	0.0
Leg. Dist. 21	1	1	100.0	0	0	0.0	0	0	0.0
Leg. Dist. 22	0	0	0.0	0	0	0.0	0	0	0.0
Leg. Dist. 23	0	0	0.0	0	0	0.0	0	0	0.0
Leg. Dist. 24	0	0	0.0	0	0	0.0	1	1	100.0
Leg. Dist. 25	0	1	0.0	0	0	0.0	0	0	0.0
Leg. Dist. 26	1	1	100.0	0	0	0.0	0	0	0.0
Leg. Dist. 27	0	1	0.0	0	0	0.0	1	1	100.0
Leg. Dist. 28	0	0	0.0	0	0	0.0	0	0	0.0
Leg. Dist. 29	0	0	0.0	0	0	0.0	0	1	0.0
CITY	<u>2</u>	<u>4</u>	<u>50.0</u>	<u>0</u>	<u>0</u>	<u>0.0</u>	<u>2</u>	<u>3</u>	<u>66.7</u>
Brighton	1	1	100.0	0	0	0.0	0	0	0.0
Chili	2	2	100.0	0	0	0.0	1	1	100.0
Clarkson	0	0	0.0	0	0	0.0	0	0	0.0
East Rochester	0	0	0.0	0	0	0.0	0	0	0.0
Gates	0	0	0.0	0	0	0.0	0	0	0.0
Greece	1	2	50.0	0	0	0.0	0	0	0.0
Hamlin	0	0	0.0	0	1	0.0	0	0	0.0
Henrietta	1	2	50.0	0	0	0.0	0	0	0.0
Irondequoit	2	2	100.0	0	0	0.0	0	0	0.0
Mendon	0	0	0.0	0	0	0.0	0	0	0.0
Ogden	0	0	0.0	0	0	0.0	0	0	0.0
Parma	1	1	100.0	0	0	0.0	0	0	0.0
Penfield	1	1	100.0	0	0	0.0	0	0	0.0
Perinton	0	0	0.0	0	0	0.0	0	0	0.0
Pittsford	0	0	0.0	0	0	0.0	0	0	0.0
Riga	0	0	0.0	0	0	0.0	0	0	0.0
Rush	0	0	0.0	0	0	0.0	0	0	0.0
Sweden	0	0	0.0	0	0	0.0	0	0	0.0
Webster	0	0	0.0	0	0	0.0	0	0	0.0
Wheatland	0	0	0.0	0	0	0.0	0	0	0.0
TOWNS	<u>9</u>	<u>11</u>	<u>81.8</u>	<u>0</u>	<u>1</u>	<u>0.0</u>	<u>1</u>	<u>1</u>	<u>100.0</u>
GRAND TOTAL	<u>11</u>	<u>15</u>	<u>73.3</u>	<u>0</u>	<u>1</u>	<u>0.0</u>	<u>3</u>	<u>4</u>	<u>75.0</u>

WORKING FAMILIES TURNOUT - TOTAL AND GENDER 2000 GENERAL ELECTION



WORKING FAMILIES TURNOUT BY AGE GROUP 2000 GENERAL ELECTION



BLANKS SUMMARY

2000 GENERAL ELECTION
VOTER TURNOUT BY GENDER

BLANKS LT/LD SUMMARY

LEGISLATIVE DISTRICT OR TOWN	TOTAL BLANKS			MALES			FEMALES		
	VOTED	REGISTERED	TURNOUT	VOTED	REGISTERED	TURNOUT	VOTED	REGISTERED	TURNOUT
Leg. Dist. 06	913	1,432	63.8	414	666	62.2	499	766	65.1
Leg. Dist. 21	1,529	2,511	60.9	782	1,255	62.3	747	1,256	59.5
Leg. Dist. 22	412	1,403	29.4	177	652	27.1	235	751	31.3
Leg. Dist. 23	1,436	2,498	57.5	708	1,237	57.2	728	1,261	57.7
Leg. Dist. 24	2,358	3,271	72.1	1,123	1,574	71.3	1,235	1,697	72.8
Leg. Dist. 25	694	1,425	48.7	324	716	45.3	370	709	52.2
Leg. Dist. 26	1,075	2,036	52.8	516	917	56.3	559	1,119	50.0
Leg. Dist. 27	1,007	1,931	52.1	488	973	50.2	519	958	54.2
Leg. Dist. 28	647	1,480	43.7	314	679	46.2	333	801	41.6
Leg. Dist. 29	914	1,815	50.4	426	823	51.8	488	992	49.2
CITY	10,985	19,802	55.5	5,272	9,492	55.5	5,713	10,310	55.4
Brighton	4,080	5,290	77.1	1,948	2,512	77.5	2,132	2,778	76.7
Chili	2,886	4,213	68.5	1,428	2,061	69.3	1,458	2,152	67.8
Clarkson	530	796	66.6	274	399	68.7	256	397	64.5
East Rochester	699	992	70.5	329	465	70.8	370	527	70.2
Gates	2,666	4,239	62.9	1,276	2,015	63.3	1,390	2,224	62.5
Greece	9,903	14,686	67.4	4,787	7,049	67.9	5,116	7,637	67.0
Hamlin	775	1,201	64.5	399	608	65.6	376	593	63.4
Henrietta	3,308	4,832	68.5	1,678	2,458	68.3	1,630	2,374	68.7
Irondequoit	6,117	8,347	73.3	2,905	3,937	73.8	3,212	4,410	72.8
Mendon	1,076	1,349	79.8	507	659	76.9	569	690	82.5
Ogden	2,057	2,827	72.8	996	1,383	72.0	1,061	1,444	73.5
Parma	1,649	2,438	67.6	795	1,189	66.9	854	1,249	68.4
Penfield	4,478	5,875	76.2	2,159	2,856	75.6	2,319	3,019	76.8
Perinton	6,110	7,833	78.0	2,985	3,854	77.5	3,125	3,979	78.5
Pittsford	3,510	4,510	77.8	1,684	2,141	78.7	1,826	2,369	77.1
Riga	566	796	71.1	302	419	72.1	264	377	70.0
Rush	512	632	81.0	260	329	79.0	252	303	83.2
Sweden	1,025	1,602	64.0	499	767	65.1	526	835	63.0
Webster	4,929	6,593	74.8	2,380	3,214	74.1	2,549	3,379	75.4
Wheatland	559	748	74.7	277	366	75.7	282	382	73.8
TOWNS	57,435	79,799	72.0	27,868	38,681	72.0	29,567	41,118	71.9
GRAND TOTAL	68,420	99,601	68.7	33,140	48,173	68.8	35,280	51,428	68.6

2000 GENERAL ELECTION
VOTER TURNOUT BY AGE GROUP

BLANKS LT/LD SUMMARY

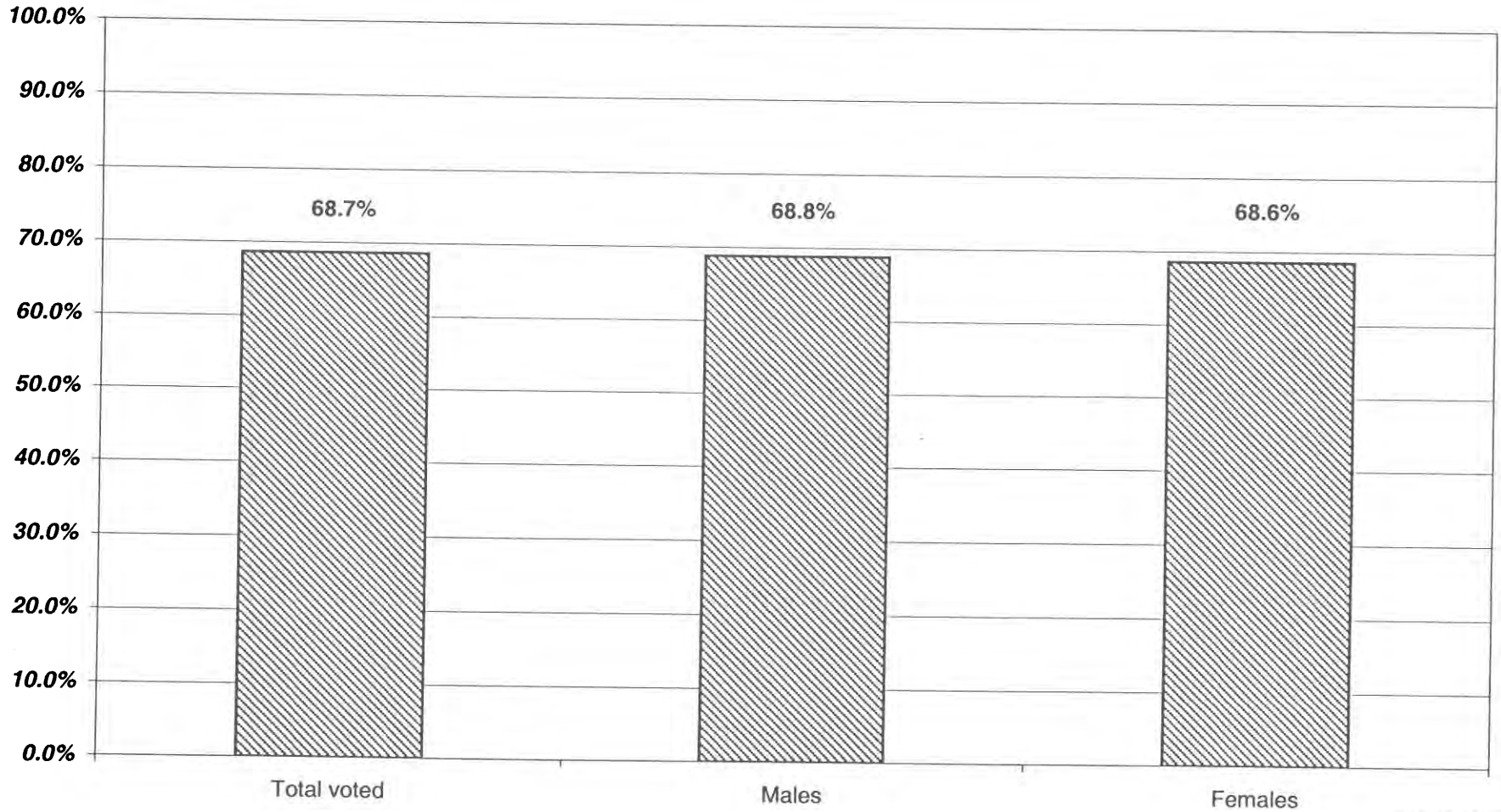
LEGISLATIVE DISTRICT OR TOWN	18-24			25-34			35-44		
	VOTED	REGISTERED	TURNOUT	VOTED	REGISTERED	TURNOUT	VOTED	REGISTERED	TURNOUT
Leg. Dist. 06	71	155	45.8	172	333	51.7	259	389	66.6
Leg. Dist. 21	151	378	39.9	377	719	52.4	432	641	67.4
Leg. Dist. 22	76	388	19.6	102	423	24.1	87	282	30.9
Leg. Dist. 23	223	462	48.3	500	898	55.7	254	467	54.4
Leg. Dist. 24	226	391	57.8	573	870	65.9	505	663	76.2
Leg. Dist. 25	122	318	38.4	176	409	43.0	132	291	45.4
Leg. Dist. 26	128	337	38.0	214	581	36.8	303	496	61.1
Leg. Dist. 27	139	360	38.6	200	486	41.2	246	465	52.9
Leg. Dist. 28	60	260	23.1	116	370	31.4	185	376	49.2
Leg. Dist. 29	88	316	27.8	165	447	36.9	243	424	57.3
CITY	1,284	3,365	38.2	2,595	5,536	46.9	2,646	4,494	58.9
Brighton	324	566	57.2	666	1,072	62.1	839	994	84.4
Chili	278	684	40.6	463	845	54.8	829	1,086	76.3
Clarkson	47	114	41.2	106	202	52.5	173	222	77.9
East Rochester	80	142	56.3	133	222	59.9	183	247	74.1
Gates	264	677	39.0	449	930	48.3	637	941	67.7
Greece	874	2,169	40.3	1,341	2,701	49.6	2,655	3,572	74.3
Hamlin	59	181	32.6	123	249	49.4	264	359	73.5
Henrietta	314	644	48.8	568	1,062	53.5	932	1,260	74.0
Irondequoit	458	913	50.2	902	1,554	58.0	1,426	1,840	77.5
Mendon	53	126	42.1	136	199	68.3	338	401	84.3
Ogden	181	391	46.3	328	536	61.2	649	812	79.9
Parma	157	357	44.0	217	494	43.9	537	692	77.6
Penfield	313	655	47.8	562	947	59.3	1,194	1,481	80.6
Perinton	426	860	49.5	845	1,419	59.5	1,626	1,893	85.9
Pittsford	231	474	48.7	342	638	53.6	854	1,008	84.7
Riga	49	115	42.6	75	135	55.6	180	227	79.3
Rush	42	67	62.7	60	98	61.2	159	182	87.4
Sweden	153	349	43.8	143	324	44.1	271	366	74.0
Webster	334	726	46.0	710	1,208	58.8	1,369	1,703	80.4
Wheatland	42	93	45.2	89	135	65.9	185	217	85.3
TOWNS	4,679	10,303	45.4	8,258	14,970	55.2	15,300	19,503	78.4
GRAND TOTAL	5,963	13,668	43.6	10,853	20,506	52.9	17,946	23,997	74.8

2000 GENERAL ELECTION
VOTER TURNOUT BY AGE GROUP

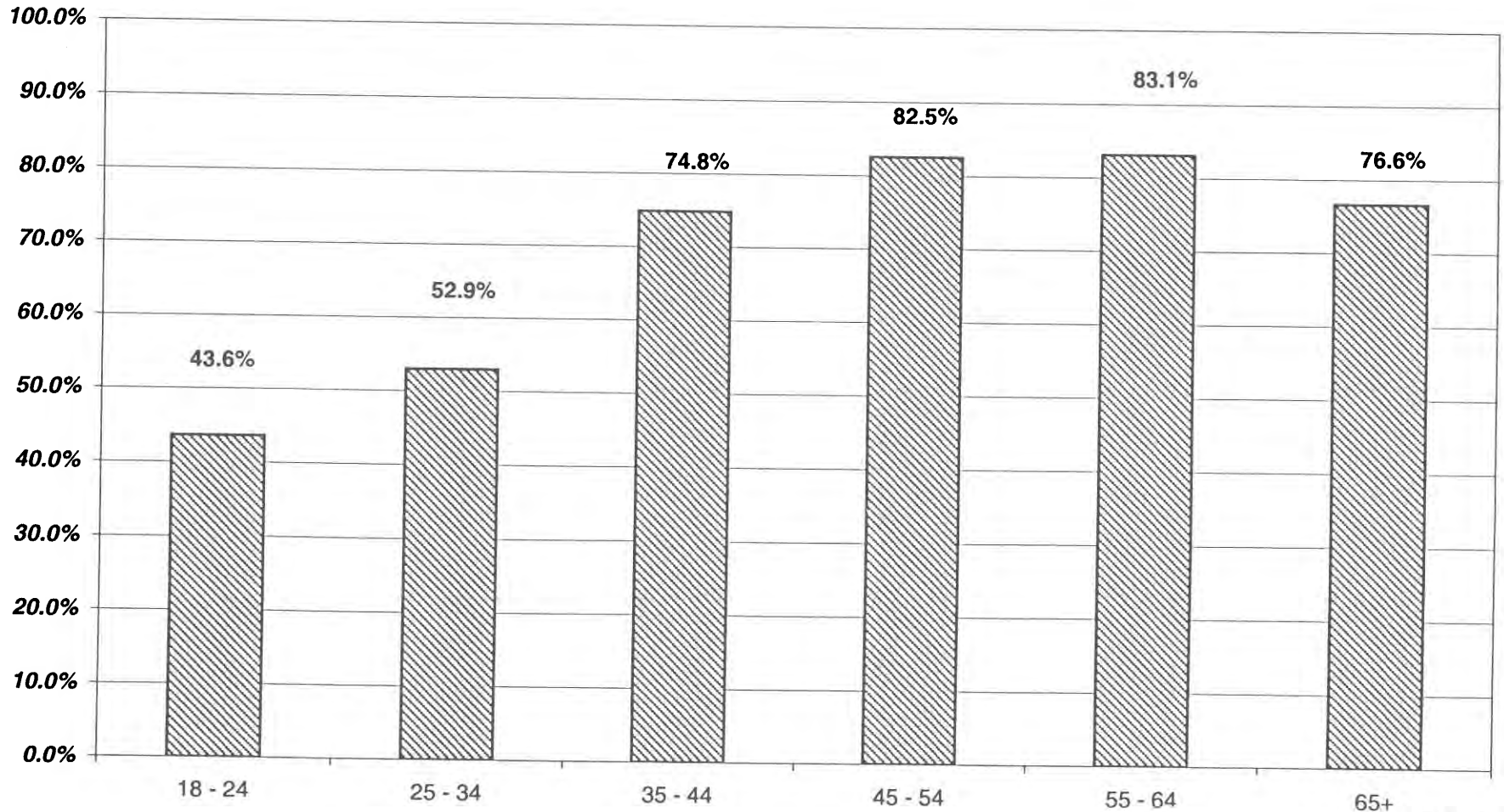
BLANKS LT/LD SUMMARY

LEGISLATIVE DISTRICT OR TOWN	45-54			55-64			65+		
	VOTED	REGISTERED	TURNOUT	VOTED	REGISTERED	TURNOUT	VOTED	REGISTERED	TURNOUT
Leg. Dist. 06	212	291	72.9	75	94	79.8	113	153	73.9
Leg. Dist. 21	322	450	71.6	113	152	74.3	113	139	81.3
Leg. Dist. 22	78	174	44.8	35	67	52.2	29	64	45.3
Leg. Dist. 23	208	311	66.9	132	175	75.4	110	172	64.0
Leg. Dist. 24	513	623	82.3	210	280	75.0	288	392	73.5
Leg. Dist. 25	134	197	68.0	64	105	61.0	59	98	60.2
Leg. Dist. 26	244	345	70.7	87	131	66.4	87	126	69.0
Leg. Dist. 27	259	348	74.4	89	149	59.7	58	98	59.2
Leg. Dist. 28	134	241	55.6	62	95	65.3	76	120	63.3
Leg. Dist. 29	191	272	70.2	86	141	61.0	119	188	63.3
CITY	2,295	3,252	70.6	953	1,389	68.6	1,052	1,550	67.9
Brighton	1,040	1,187	87.6	483	543	89.0	665	848	78.4
Chili	782	930	84.1	272	329	82.7	243	310	78.4
Clarkson	120	150	80.0	45	57	78.9	39	51	76.5
East Rochester	159	192	82.8	67	87	77.0	67	87	77.0
Gates	575	739	77.8	342	435	78.6	386	501	77.0
Greece	2,801	3,438	81.5	1,089	1,297	84.0	1,045	1,394	75.0
Hamlin	221	272	81.3	70	87	80.5	37	52	71.2
Henrietta	812	997	81.4	371	463	80.1	298	392	76.0
Irondequoit	1,603	1,887	84.9	696	825	84.4	904	1,172	77.1
Mendon	355	400	88.8	126	138	91.3	64	81	79.0
Ogden	557	675	82.5	217	250	86.8	108	145	74.5
Parma	455	560	81.3	173	197	87.8	105	133	78.9
Penfield	1,315	1,503	87.5	573	663	86.4	474	570	83.2
Perinton	1,786	2,010	88.9	820	916	89.5	582	703	82.8
Pittsford	995	1,127	88.3	546	610	89.5	515	620	83.1
Riga	167	203	82.3	53	64	82.8	41	51	80.4
Rush	158	180	87.8	59	63	93.7	31	36	86.1
Sweden	290	359	80.8	103	114	90.4	64	89	71.9
Webster	1,361	1,561	87.2	606	701	86.4	488	625	78.1
Wheatland	143	179	79.9	51	58	87.9	46	63	73.0
TOWNS	15,695	18,549	84.6	6,762	7,897	85.6	6,202	7,923	78.3
GRAND TOTAL	17,990	21,801	82.5	7,715	9,286	83.1	7,254	9,473	76.6

BLANKS TURNOUT - TOTAL AND GENDER 2000 GENERAL ELECTION



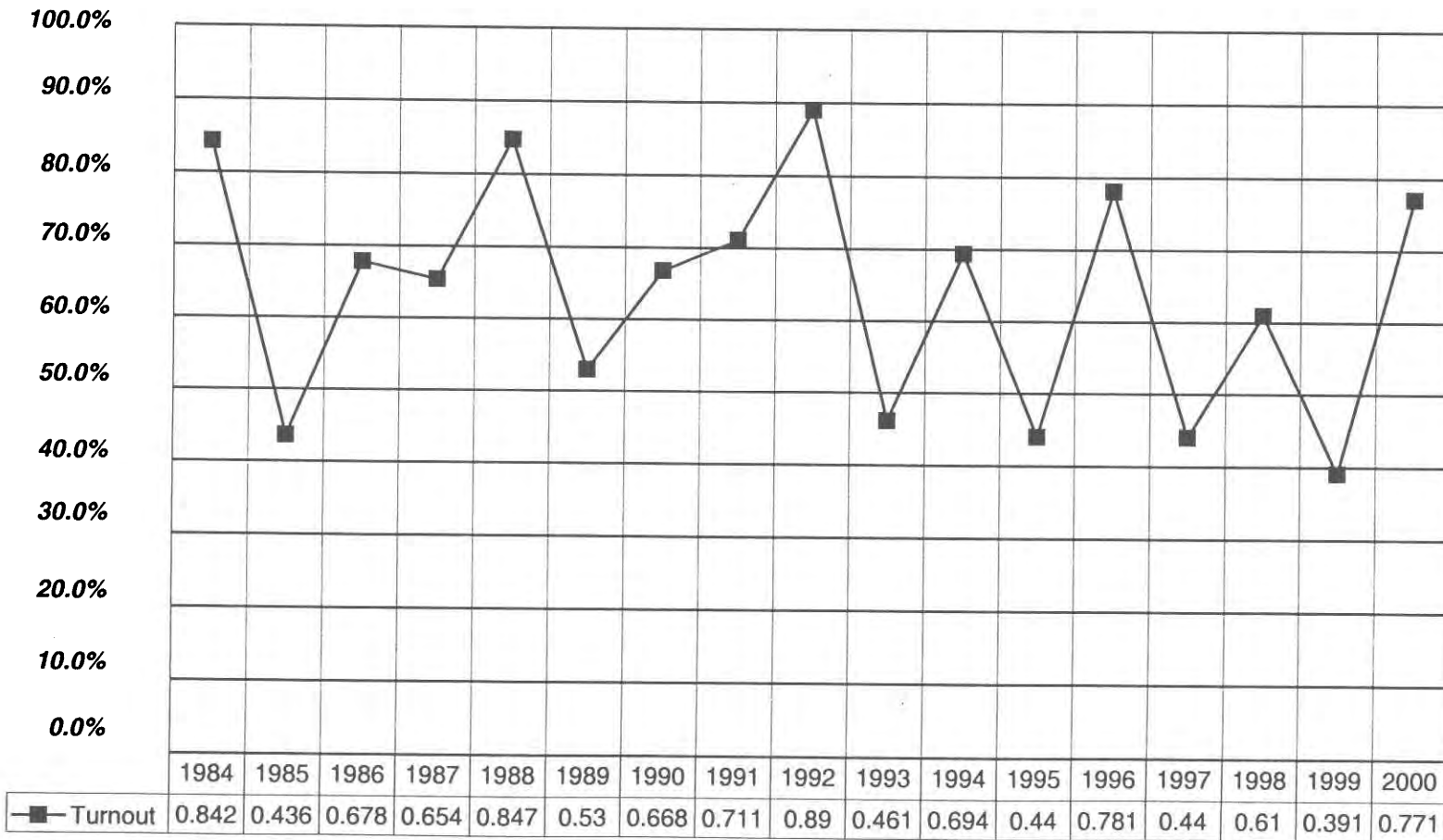
BLANKS TURNOUT BY AGE GROUP 2000 GENERAL ELECTION



HISTORICAL DATA

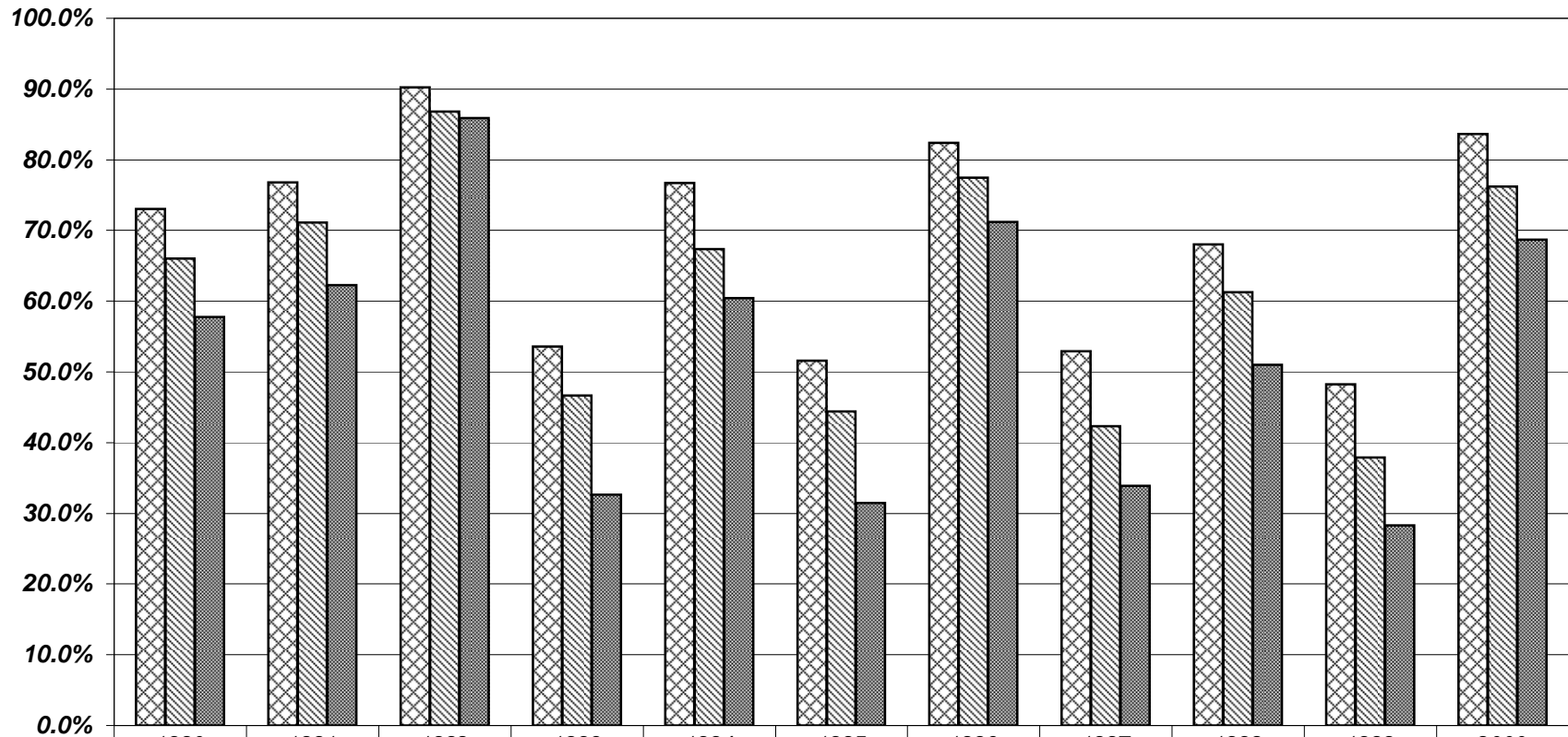
Voter Turnout for the General Election

1986 Through 2000



VOTER TURNOUT BY PARTY

1990 Through 2000 General Elections



☒ Republicans	73.0%	76.8%	90.2%	53.6%	76.7%	51.6%	82.4%	52.9%	68.0%	48.2%	83.6%
☒ Democrats	66.0%	71.1%	86.8%	46.7%	67.4%	44.4%	77.5%	42.3%	61.3%	37.9%	76.2%
☒ Blanks	57.8%	62.3%	85.9%	32.6%	60.4%	31.5%	71.2%	33.9%	51.0%	28.3%	68.7%